



SAWS 2021 CMOM Package 6 – Open Cut and Pipe Burst
Solicitation Number: CO-00713
Job No.: 22-4510

ADDENDUM 5
December 28, 2023

To Bidder of Record:

This addendum, applicable to the work referenced above, is an amendment to the bidding documents and as such will be a part of and included in the Contract Documents. Acknowledge receipt of this addendum by entering the addendum number and issue date in the space provided in the submitted bid proposal.

RESPONSES TO QUESTIONS

1. **Question:** Does the Owner anticipate the need for Well Pointing/dewatering during this project?

Response: *Well pointing/dewatering is not anticipated for this project. If dewatering is necessary, it shall be covered by Bid Item No. 550 – TRENCH EXCAVATION SAFETY PROTECTION.*

2. **Question:** Will the appropriate bid item be added for Special Shoring per VF on the (2) deep manholes on plan sheet 31 & 39?

Response: *No, all trench protection methods shall be covered by Bid Item No. 550 – TRENCH EXCAVATION SAFETY PROTECTION.*

3. **Question:** There is an allowance provided for Large Diameter bypassing for site 9,12,16,26 & 28, but does not include the Large Diameter (48”) bypass on site 14. Will an allowance be added for site 14 Large Diameter bypassing?

Response: *No. Refer to Bid Item No. 864 - BYPASS PUMPING LARGE DIAMETER SANITARY SEWER MAINS for Site 14. See Plan sheet 31.*

4. **Question:** As each site is completed, will SAWS allow the 2 year warranty to start at that time instead of waiting the 600 calendar days for warranty to start and last another 2 years?

Response: *No, the two-year warranty period will begin upon final acceptance per General Conditions Article IX.9.3.*

5. **Question:** As each site is completed and accepted, will SAWS release the retainage for that work? If retainage is held for the entire 600 days it will be a financial hardship on the contractor.

Response: *The retainage will be held until final acceptance of the Project per General Conditions Article IX.9.1.1.*

6. **Question:** If concrete encasement around the proposed sewer laterals is called for, will this be paid under the existing appropriate bid item?

Response: *Yes, if concrete encasement around the proposed sewer laterals is required then it will be paid under Bid Item No. 858 – CONCRETE ENCASEMENT, CRADLES, SADDLES AND COLLARS.*

7. **Question:** Please clarify on bid item 153 “Portable Message Sign (9) each” is the (9) each paid on per locations or per sign in case (2) signs are required at one location.

Response: *For Bid Item No. 6001 – PORTABLE CHANGEABLE MESSAGE SIGN (TXDOT SPEC) is quantified for each sign required for this project.*

8. **Question:** Will project signs be required for each site?

Response: *Yes, a project sign shall be displayed at every active site. Refer to SAWS Specification Item No. 869 – Project Signs.*

9. **Question:** Does the estimate of \$11,800,000.00 include the \$1,101,135.00 for allowance?

Response: *Yes, that includes the \$1,101,135.00 for the allowance.*

CHANGES TO SPECIFICATIONS

1. **BID PROPOSAL** – Remove Bid Proposal in its entirety and replace with the revised Bid Proposal attached to this Addendum. The bid items and estimated quantities have been updated. This version of the bid proposal should be used by bidders when submitting a bid for this project. Failure to use the revised version of the bid proposal may result in the bid being found non-responsive. The changes to the Bid Form includes:
- A) Added “INTERMEDIATE DEMOBILIZATION AND REMOBILIZATION” Subtotal row.
 - B) Updating the quantity for Item No.13 (299) to 245.
 - C) Updating the material for Item No. 96 (854.1) to “SDR 26, ASTM D2241, 160 PSI”.
 - D) Updating the quantity for Item No. 153 (6001) to 10.
 - E) Updating Item No. 214 (102.1) Units from Lump Sum (LS) to Each (EA).
 - F) Updating from Allowance Subtotal (Items 213-224) to Allowance Subtotal (Items 215-226).

2. **SPECIAL CONDITIONS** – Remove Special Conditions in its entirety and replace with the revised Special Conditions attached to this addendum. The changes to the Special Conditions include:
 - A) The addition of Site 13 as a high priority site due to condition of the existing sanitary sewer main. *See Special Conditions SC.1.1.I*
 - B) Added *but not limited to*. *See Special Conditions SC.2.2.II.*
 - C) Clarification to payment. *See Special Conditions SC.2.2.III.*
 - D) Clarification for payment of watermain adjustment and traffic control items. *See Special Conditions SC.2.8.I.b and SC.2.8.I.c.*
 - E) Clarification for payment of traffic control items. *See Special Conditions SC.2.8.II.b.*
 - F) Clarification for payment of traffic control items. *See Special Conditions SC.2.8.III.c.*
 - G) Modified condition to remove duplicate text and reference to Section 408 Permit. *See Special Conditions SC.2.8.IV.c.*
 - H) Clarification on Site 9 schedule constraints and night work hours and days have been added. Clarification for payment of traffic control items. *See Special Conditions SC.2.8.V.a., SC.2.8.V.b. and SC.2.8.V.g.*
 - I) Clarification on Site 12 schedule constraints and night work hours and days have been added. Clarification for payment of traffic control items. *See Special Conditions SC.2.8.VII.b. and SC.2.8.VII.f.*
 - J) Clarification for payment of traffic control items. *See Special Conditions SC.2.8.IX.a.*
 - K) Clarification for payment. *See Special Conditions SC.2.8.X.d.*
 - L) Clarification for payment of traffic control items. *See Special Conditions SC.2.8.XII.b.*
 - M) Clarification for payment of traffic control items. *See Special Conditions SC.2.8.XIII.a.*
 - N) Clarification for payment of traffic control items. *See Special Conditions SC.2.8.XIV.d.*
 - O) Modified condition to remove duplicate text and clarification for payment of traffic control items. *See Special Conditions SC.2.8.XV.b and SC.2.8.XV.c.*
 - P) Clarification for payment of traffic control items. *See Special Conditions SC.2.8.XVII.b.*
 - Q) Clarification for payment of traffic control items. *See Special Conditions SC.2.8.XVIII.a.*
 - R) Clarification for payment of traffic control items. *See Special Conditions SC.2.8.XIX.b.*
 - S) Clarification for payment of traffic control items. *See Special Conditions SC.2.8.XX.b.*
 - T) Clarification for payment of traffic control items. *See Special Conditions SC.2.8.XXI.a.*

3. **SPECIAL SPECIFICATION ITEM NO. 02120 WASTE MANAGEMENT, TRANSPORT, AND DISPOSAL** - Remove Special Specification 02120 – Waste Management, Transport, and Disposal in its entirety and replace with the revised Special Specification 02120 – Waste Management, Transport and Disposal, attached to this addendum. The changes to the Special Specification include:
 - A) Updating the unit for Item SS 02120.ES from per Lump Sum (LS) to Allowance (ALW). *See Special Specification, PART 4 – MEASUREMENT AND PAYMENT, 4.01.A.1.a.*

CHANGES TO PLANS

1. **SHEETS 3, 24, 27, 29, 30, 33, 42, 45 and 54:** Remove sheets 3, 24, 27, 29, 30, 33, 42, 45 and 54 from the Plans and replace with the attached Sheets 3, 24, 27, 29, 30, 33, 42, 45 and 54. The changes include revisions to the Quantity Summary Table, Special Notes, lateral location, flowable fill (high strength) quantity, and existing water elevation.

END OF ADDENDUM 5

This Addendum, including these four (4) pages, is forty-two (42) pages in its entirety including the attachments.

Attachments:

Bid Proposal in its entirety (9 pages)

Special Conditions in its entirety (12 pages)

SS Item No. 02120 Waste Management, Transport, and Disposal in its entirety (8 pages)

Plan sheets 3, 24, 27, 29, 30, 33, 42, 45 and 54 (9 pages)



12/28/2023

Lockwood, Andrews & Newnam, Inc.
Texas Registered Engineering Firm
F-2614

BID PROPOSAL

PROPOSAL OF _____, a corporation
a partnership consisting of _____
an individual doing business as _____

THE SAN ANTONIO WATER SYSTEM:

Pursuant to Instructions and Invitation to Bidders, the undersigned proposes to furnish all labor and materials as specified and perform the work required for the project as specified, in accordance with the Plans and Specifications for the following prices in the bid proposal to wit:

PLEASE SEE ATTACHED LIST OF BID ITEMS.

BIDDER'S SIGNATURE & TITLE

FIRM'S NAME (TYPE OR PRINT)

FIRM'S ADDRESS

FIRM'S PHONE NO. /FAX NO.

FIRM'S EMAIL ADDRESS

The Contractor herein acknowledges receipt of the following: **Addendum No(s)**. _____

OWNER RESERVES THE RIGHT TO ACCEPT THE OVERALL MOST RESPONSIBLE BID.

The Bidder offers to construct the Project in accordance with the Contract Documents for the contract price, and to complete the Project within **600** calendar days after the start date, as set forth in the Authorization to Proceed. **The bidder understands and accepts the provisions of the contract Documents relating to liquidated damages of the project if not completed on time.**

Complete the additional requirements of the Bid Proposal which are included on the following pages.

Statement on President's Executive Orders

Has your firm previously performed work subject to the President's Executive Orders Numbers 11246 and 11375 or any preceding similar executive orders (Numbers 10925 and 11114)? Yes No

Texas Government Code Chapter 2274 Verifications

- (1) Are you, Contractor, held or controlled by individuals who are citizens of China, Iran, North Korea, Russia or a country designated by the Governor of the State of Texas pursuant to Texas Government Code Chapter 2274? Yes No
- (2) Are you, Contractor, held or controlled by a company or other entity, including a governmental entity, that is owned or controlled by citizens of or directly controlled by the government of China, Iran, North Korea, Russia or a country designated by the Governor of the State of Texas pursuant to Texas Government Code Chapter 2274? Yes No
- (3) Are you, Contractor, headquartered in China, Iran, North Korea, Russia or a country designated by the Governor of the State of Texas pursuant to Texas Government Code Chapter 2274?
Yes No

Item No.	Spec Item	Description	Unit	Quantity	Unit Price	Total
1	103.1	REMOVE CONCRETE CURB (COSA SPEC)	LF	554	\$	\$
2	103.3	REMOVE CONCRETE SIDEWALKS & DRIVEWAYS (COSA SPEC)	SF	6119	\$	\$
3	202.1	PRIME COAT (COSA SPEC)	GAL	3410	\$	\$
4	203.1	TACK COAT (COSA SPEC)	GAL	2257	\$	\$
5	205.2	HOT MIX ASPHALTIC PAVEMENT, TYPE B (10" COMP DEPTH) (COSA SPEC)	SY	2057	\$	\$
6	205.2	HOT MIX ASPHALTIC PAVEMENT, TYPE B (12" COMP DEPTH) (COSA SPEC)	SY	18	\$	\$
7	205.3	HOT MIX ASPHALTIC PAVEMENT, TYPE C (3" COMP DEPTH) (COSA SPEC)	SY	14848	\$	\$
8	205.4	HOT MIX ASPHALTIC PAVEMENT, TYPE D (2" COMP DEPTH) (COSA SPEC)	SY	3523	\$	\$
9	205.4	HOT MIX ASPHALTIC PAVEMENT, TYPE D (3" COMP DEPTH) (COSA SPEC)	SY	4417	\$	\$
10	208.1	SALVAGING, HAULING, AND STOCKPILING RECLAIMABLE ASPHALTIC PAVEMENT (2" DEPTH) (COSA SPEC)	SY	3272	\$	\$
11	208.1	SALVAGING, HAULING, AND STOCKPILING RECLAIMABLE ASPHALTIC PAVEMENT (3" DEPTH) (COSA SPEC)	SY	18988	\$	\$
12	209.1	CONCRETE PAVEMENT	SY	3	\$	\$
13	299	FLOWABLE FILL (HIGH STRENGTH)	CY	245	\$	\$
14	299.2	FLOWABLE FILL (LOW STRENGTH)	CY	215	\$	\$
15	403.8	INLET (COMPLETE)(TYPE C-I) (10') (COSA SPEC)	EA	1	\$	\$
16	403.14	INLET EXTENSION(COMPLETE) (TYPE C-I)(10') (COSA SPEC)	EA	1	\$	\$
17	404.1	CORRUGATED METAL PIPE	LF	17	\$	\$
18	500.1	CONCRETE CURB (COSA SPEC)	LF	554	\$	\$
19	502.1	CONCRETE SIDEWALKS (COSA SPEC)	SY	210	\$	\$
20	502.1	CONCRETE SIDEWALKS (COSA SPEC)(RAMP)	EA	2	\$	\$
21	503.1	PORTLAND CEMENT CONCRETE DRIVEWAYS (COSA SPEC)	SY	373	\$	\$
22	503.2	PORTLAND CEMENT CONCRETE DRIVEWAYS - COMMERCIAL (COSA SPEC)	SY	105	\$	\$
23	503.5	GRAVEL DRIVEWAY	SY	113	\$	\$
24	506	CONCRETE RETAINING WALL - COMBINATION TYPE (COSA SPEC)	CY	5	\$	\$
25	520.1	HYDROMULCHING	SY	40	\$	\$
26	530.1	BARRICADES, SIGNS, AND TRAFFIC HANDLING (COSA SPEC) - SITE NO. 1	EA	1	\$	\$
27	530.1	BARRICADES, SIGNS, AND TRAFFIC HANDLING (COSA SPEC) - SITE NO. 2	EA	1	\$	\$
28	530.1	BARRICADES, SIGNS, AND TRAFFIC HANDLING (COSA SPEC) - SITE NO. 3	EA	1	\$	\$
29	530.1	BARRICADES, SIGNS, AND TRAFFIC HANDLING (COSA SPEC) - SITE NO. 4	EA	1	\$	\$

Item No.	Spec Item	Description	Unit	Quantity	Unit Price	Total
30	530.1	BARRICADES, SIGNS, AND TRAFFIC HANDLING (COSA SPEC) - SITE NO. 7	EA	1	\$	\$
31	530.1	BARRICADES, SIGNS, AND TRAFFIC HANDLING (COSA SPEC) - SITE NO. 8	EA	1	\$	\$
32	530.1	BARRICADES, SIGNS, AND TRAFFIC HANDLING (COSA SPEC) - SITE NO. 9	EA	1	\$	\$
33	530.1	BARRICADES, SIGNS, AND TRAFFIC HANDLING (COSA SPEC) - SITE NO. 11	EA	1	\$	\$
34	530.1	BARRICADES, SIGNS, AND TRAFFIC HANDLING (TXDOT SPEC) - SITE NO. 12	EA	1	\$	\$
35	530.1	BARRICADES, SIGNS, AND TRAFFIC HANDLING (COSA SPEC) - SITE NO. 13	EA	1	\$	\$
36	530.1	BARRICADES, SIGNS, AND TRAFFIC HANDLING (COSA SPEC) - SITE NO. 14	EA	1	\$	\$
37	530.1	BARRICADES, SIGNS, AND TRAFFIC HANDLING (COSA SPEC) - SITE NO. 16	EA	1	\$	\$
38	530.1	BARRICADES, SIGNS, AND TRAFFIC HANDLING (COSA SPEC) - SITE NO. 18	EA	1	\$	\$
39	530.1	BARRICADES, SIGNS, AND TRAFFIC HANDLING (COSA SPEC) - SITE NO. 20	EA	1	\$	\$
40	530.1	BARRICADES, SIGNS, AND TRAFFIC HANDLING (COSA SPEC) - SITE NO. 21	EA	1	\$	\$
41	530.1	BARRICADES, SIGNS, AND TRAFFIC HANDLING (COSA SPEC) - SITE NO. 22	EA	1	\$	\$
42	530.1	BARRICADES, SIGNS, AND TRAFFIC HANDLING (COSA SPEC) - SITE NO. 23	EA	1	\$	\$
43	530.1	BARRICADES, SIGNS, AND TRAFFIC HANDLING (COSA SPEC) - SITE NO. 24	EA	1	\$	\$
44	530.1	BARRICADES, SIGNS, AND TRAFFIC HANDLING (COSA SPEC) - SITE NO. 25	EA	1	\$	\$
45	530.1	BARRICADES, SIGNS, AND TRAFFIC HANDLING (COSA SPEC) - SITE NO. 26	EA	1	\$	\$
46	530.1	BARRICADES, SIGNS, AND TRAFFIC HANDLING (COSA SPEC) - SITE NO. 27	EA	1	\$	\$
47	530.1	BARRICADES, SIGNS, AND TRAFFIC HANDLING (COSA SPEC) - SITE NO. 28	EA	1	\$	\$
48	530.1	BARRICADES, SIGNS, AND TRAFFIC HANDLING (COSA SPEC) - SITE NO. 31	EA	1	\$	\$
49	530.1	BARRICADES, SIGNS, AND TRAFFIC HANDLING (COSA SPEC) - SITE NO. 32	EA	1	\$	\$
50	530.1	BARRICADES, SIGNS, AND TRAFFIC HANDLING (COSA SPEC) - SITE NO. 34	EA	1	\$	\$
51	530.1	BARRICADES, SIGNS, AND TRAFFIC HANDLING (COSA SPEC) - SITE NO. 35	EA	1	\$	\$
52	530.1	BARRICADES, SIGNS, AND TRAFFIC HANDLING (COSA SPEC) - SITE NO. 36	EA	1	\$	\$
53	535.1	4 INCH WIDE YELLOW LINE (COSA SPEC)	LF	5879	\$	\$
54	535.2	4 INCH WIDE WHITE LINE (COSA SPEC)	LF	2546	\$	\$
55	535.4	8 INCH WIDE WHITE LINE (COSA SPEC)	LF	3075	\$	\$
56	535.5	12 INCH WIDE WHITE LINE (COSA SPEC)	LF	190	\$	\$
57	535.7	24 INCH WIDE WHITE LINE (COSA SPEC)	LF	806	\$	\$
58	535.8	RIGHT WHITE ARROW (COSA SPEC)	EA	2	\$	\$
59	535.9	LEFT WHITE ARROW (COSA SPEC)	EA	4	\$	\$

Item No.	Spec Item	Description	Unit	Quantity	Unit Price	Total
60	535.12	WORD "ONLY" (PER WORD) (COSA SPEC)	EA	1	\$	\$
61	535.13	STRAIGHT WHITE ARROW (COSA SPEC)	EA	7	\$	\$
62	535.17	BICYCLE RIDER SYMBOL (COSA SPEC)	EA	5	\$	\$
63	537.1	TRAFFIC BUTTON (TYPE W)	EA	34	\$	\$
64	537.5	PAVEMENT MARKER (TYPE I-A) (COSA SPEC)	EA	2	\$	\$
65	537.6	PAVEMENT MARKER (TYPE I-C) (COSA SPEC)	EA	31	\$	\$
66	537.7	PAVEMENT MARKER (TYPE I-R) (COSA SPEC)	EA	56	\$	\$
67	537.8	PAVEMENT MARKER (TYPE II-A-A) (COSA SPEC)	EA	182	\$	\$
68	537.9	PAVEMENT MARKER (TYPE II-C-R) (COSA SPEC)	EA	16	\$	\$
69	540.9	TEMPORARY SEDIMENT CONTROL FENCE (COSA SPEC)	LF	850	\$	\$
70	550	TRENCH EXCAVATION SAFETY PROTECTION	LF	4506	\$	\$
71	801	TREE AND LANDSCAPE PROTECTION (COSA SPEC)	LS	1	\$	\$
72	814	4" DUCTILE IRON PIPE	LF	38	\$	\$
73	814	8" DUCTILE IRON PIPE	LF	114	\$	\$
74	818	8" PVC C-900 (SDR 18, 235 PSI) WATERLINE (RESTRAIN AS REQUIRED)	LF	104	\$	\$
75	836	PIPE FITTINGS (ALL SIZES & TYPES)	TN	2	\$	\$
76	840	2" WATER TIE-IN	EA	2	\$	\$
77	840	6" WATER TIE-IN	EA	6	\$	\$
78	840	8" WATER TIE IN	EA	4	\$	\$
79	841	WATER HYDROSTATIC TESTING	EA	6	\$	\$
80	844	2" BLOW-OFF, TEMPORARY	EA	12	\$	\$
81	848	8" PVC SANITARY SEWER PIPE (SDR 26, ASTM D2241) (ALL DEPTHS)	LF	3550	\$	\$
82	848	10" PVC SANITARY SEWER PIPE (SDR 26, ASTM D2241) (ALL DEPTHS)	LF	35	\$	\$
83	848	12" PVC SANITARY SEWER PIPE (SDR 26, ASTM D2241) (ALL DEPTHS)	LF	673	\$	\$
84	848	15" PVC SANITARY SEWER PIPE (SDR 26, ASTM D3034) (ALL DEPTHS)	LF	107	\$	\$
85	850	POLYMER CONCRETE SANITARY SEWER STRUCTURES (DOGHOUSE) (60" WIDE MIN)	EA	1	\$	\$
86	850	POLYMER CONCRETE SANITARY SEWER STRUCTURE (60" WIDE MIN)	EA	1	\$	\$
87	850	POLYMER CONCRETE DROP SANITARY SEWER STRUCTURE (60" WIDE MIN)	EA	3	\$	\$
88	851	EXISTING MANHOLE ADJUSTMENT	EA	3	\$	\$
89	852.8.1	SANITARY SEWER MANHOLE (0' - 6' DEPTH) (WATERTIGHT)	EA	26	\$	\$
90	852.8.1	SANITARY SEWER DROP MANHOLE (0' - 6' DEPTH) (WATERTIGHT)	EA	3	\$	\$

Item No.	Spec Item	Description	Unit	Quantity	Unit Price	Total
91	852.8.1	SANITARY SEWER DOGHOUSE MANHOLE (0' - 6' DEPTH) (WATERTIGHT)	EA	2	\$	\$
92	852.8.2	EXTRA DEPTH MANHOLES (> 6' DEEP)	VF	50	\$	\$
93	852.8.2	EXTRA DEPTH DROP MANHOLES (>6' DEEP)	VF	20	\$	\$
94	852.8.2	EXTRA DEPTH DOGHOUSE MANHOLE (>6' DEEP)	VF	8	\$	\$
95	852.8.3	SHALLOW SANITARY SEWER MANHOLE (DD-852-04)	EA	6	\$	\$
96	854.1	SANITARY SEWER LATERALS (SDR 26, ASTM D2241, 160 PSI)	LF	2125	\$	\$
97	854.2	TWO-WAY SANITARY SEWER CLEAN-OUT	EA	90	\$	\$
98	854.3	ONE-WAY SANITARY SEWER CLEAN-OUT	EA	9	\$	\$
99	855	RECONSTRUCTION OF EXISTING MANHOLES	EA	3	\$	\$
100	856.2	15" PVC SANITARY SEWER CARRIER PIPE (SDR 26, ASTM D3034)	LF	20	\$	\$
101	856.3	30" STEEL CASING (0.375-INCH THICKNESS)	LF	20	\$	\$
102	858	CONCRETE ENCASEMENT, CRADLES, SADDLES AND COLLARS	CY	148	\$	\$
103	860	VERTICAL STACKS	VF	52	\$	\$
104	862.7.1	ABANDONMENT OF SANITARY SEWER MANHOLE	EA	3	\$	\$
105	862.7.2	ABANDONMENT OF SANITARY SEWER MAINS (GROUTED)	LF	144	\$	\$
106	862.7.3	ABANDONMENT OF SANITARY SEWER MAINS (PLUG ONLY)	EA	2	\$	\$
107	864	BYPASS PUMPING (LARGE DIAMETER SANITARY SEWERS) - SITE NO. 14	EA	1	\$	\$
108	865	BYPASS PUMPING (SMALL DIAMETER SANITARY SEWERS) - SITE NO. 1	EA	1	\$	\$
109	865	BYPASS PUMPING (SMALL DIAMETER SANITARY SEWERS) - SITE NO. 2	EA	1	\$	\$
110	865	BYPASS PUMPING (SMALL DIAMETER SANITARY SEWERS) - SITE NO. 4	EA	1	\$	\$
111	865	BYPASS PUMPING (SMALL DIAMETER SANITARY SEWERS) - SITE NO. 7	EA	1	\$	\$
112	865	BYPASS PUMPING (SMALL DIAMETER SANITARY SEWERS) - SITE NO. 8	EA	1	\$	\$
113	865	BYPASS PUMPING (SMALL DIAMETER SANITARY SEWERS) - SITE NO. 9	EA	1	\$	\$
114	865	BYPASS PUMPING (SMALL DIAMETER SANITARY SEWERS) - SITE NO. 11	EA	1	\$	\$
115	865	BYPASS PUMPING (SMALL DIAMETER SANITARY SEWERS) - SITE NO. 12	EA	1	\$	\$
116	865	BYPASS PUMPING (SMALL DIAMETER SANITARY SEWERS) - SITE NO. 13	EA	1	\$	\$
117	865	BYPASS PUMPING (SMALL DIAMETER SANITARY SEWERS) - SITE NO. 15	EA	1	\$	\$
118	865	BYPASS PUMPING (SMALL DIAMETER SANITARY SEWERS) - SITE NO. 16	EA	1	\$	\$
119	865	BYPASS PUMPING (SMALL DIAMETER SANITARY SEWERS) - SITE NO. 18	EA	1	\$	\$

Item No.	Spec Item	Description	Unit	Quantity	Unit Price	Total
120	865	BYPASS PUMPING (SMALL DIAMETER SANITARY SEWERS) - SITE NO. 20	EA	1	\$	\$
121	865	BYPASS PUMPING (SMALL DIAMETER SANITARY SEWERS) - SITE NO. 21	EA	1	\$	\$
122	865	BYPASS PUMPING (SMALL DIAMETER SANITARY SEWERS) - SITE NO. 22	EA	1	\$	\$
123	865	BYPASS PUMPING (SMALL DIAMETER SANITARY SEWERS) - SITE NO. 23	EA	1	\$	\$
124	865	BYPASS PUMPING (SMALL DIAMETER SANITARY SEWERS) - SITE NO. 24	EA	1	\$	\$
125	865	BYPASS PUMPING (SMALL DIAMETER SANITARY SEWERS) - SITE NO. 25	EA	1	\$	\$
126	865	BYPASS PUMPING (SMALL DIAMETER SANITARY SEWERS) - SITE NO. 26	EA	1	\$	\$
127	865	BYPASS PUMPING (SMALL DIAMETER SANITARY SEWERS) - SITE NO. 27	EA	1	\$	\$
128	865	BYPASS PUMPING (SMALL DIAMETER SANITARY SEWERS) - SITE NO. 28	EA	1	\$	\$
129	865	BYPASS PUMPING (SMALL DIAMETER SANITARY SEWERS) - SITE NO. 31	EA	1	\$	\$
130	865	BYPASS PUMPING (SMALL DIAMETER SANITARY SEWERS) - SITE NO. 32	EA	1	\$	\$
131	865	BYPASS PUMPING (SMALL DIAMETER SANITARY SEWERS) - SITE NO. 34	EA	1	\$	\$
132	865	BYPASS PUMPING (SMALL DIAMETER SANITARY SEWERS) - SITE NO. 35	EA	1	\$	\$
133	866	SANITARY SEWER MAIN PRE-TELEVISION INSPECTION (8"-15" DIA)	LF	9463	\$	\$
134	866	SANITARY SEWER MAIN POST-TELEVISION INSPECTION (8"-15" DIA)	LF	4885	\$	\$
135	866	SANITARY SEWER MAIN PRE-TELEVISION INSPECTION (18"-24" DIA)	LF	391	\$	\$
136	900	PIPE-BURST 8" SANITARY SEWER PIPE (ALL DEPTHS)	LF	3267	\$	\$
137	900	PIPE-BURST 10" SANITARY SEWER PIPE (ALL DEPTHS)	LF	318	\$	\$
138	900	PIPE-BURST 12" SANITARY SEWER PIPE (ALL DEPTHS)	LF	1299	\$	\$
139	900	PIPE-BURST 18" SANITARY SEWER PIPE (ALL DEPTHS)	LF	391	\$	\$
140	900.5	PIPE-BURST POINT REPAIRS (20 LF LENGTH) (ALL DEPTHS)	EA	5	\$	\$
141	900.5	PIPE-BURST POINT REPAIRS EXTRA LENGTH (ALL DEPTHS)	LF	3	\$	\$
142	900.6	PIPE-BURST OBSTRUCTION REMOVAL (ALL DEPTHS)	EA	1	\$	\$
143	910.1	MANHOLE REHABILITATION (STANDARD MANHOLES 4FT DIAMETER)	VF	150	\$	\$
144	1020	2" WATER MAIN BREAK/LEAK REPAIR	EA	1	\$	\$
145	1020	6" WATER MAIN BREAK/LEAK REPAIR	EA	7	\$	\$
146	1020	8" WATER MAIN BREAK/LEAK REPAIR	EA	5	\$	\$
147	1020	10" WATER MAIN BREAK/LEAK REPAIR	EA	1	\$	\$
148	1020	12" WATER MAIN BREAK/LEAK REPAIR	EA	2	\$	\$
149	1020	16" WATER MAIN BREAK/LEAK REPAIR	EA	1	\$	\$
150	1020	24" WATER MAIN BREAK/LEAK REPAIR	EA	1	\$	\$

Item No.	Spec Item	Description	Unit	Quantity	Unit Price	Total
151	1109.1	SERVICE RECONNECTION BY OPEN CUT EXCAVATION (ALL DEPTHS)	EA	95	\$	\$
152	3000	HANDLING ASBESTOS CEMENT PIPE	LF	65	\$	\$
153	6001	PORTABLE CHANGEABLE MESSAGE SIGN (TXDOT SPEC)	EA	10	\$	\$
154	SS 2010	REMOVAL & REPLACEMENT OF FENCES (ALL TYPES, SIZES)	LS	1	\$	\$
155	SS 2012	ROUNDBOUT REPAIRS	LS	1	\$	\$
156	SS 3300	SANITARY SEWER PRIVATE LATERAL (4"-6")	LF	93	\$	\$
157	TXDOT 0666-COSM1	GREEN REFLECTORIZED TYPE 1 THERMO	SF	200	\$	\$
SUBTOTAL (ITEMS 1 - 157)						\$
158	100	MOBILIZATION (SITE 1)	LS	1	\$	\$
159	100	MOBILIZATION (SITE 2)	LS	1	\$	\$
160	100	MOBILIZATION (SITE 3)	LS	1	\$	\$
161	100	MOBILIZATION (SITE 4)	LS	1	\$	\$
162	100	MOBILIZATION (SITE 7)	LS	1	\$	\$
163	100	MOBILIZATION (SITE 8)	LS	1	\$	\$
164	100	MOBILIZATION (SITE 9)	LS	1	\$	\$
165	100	MOBILIZATION (SITE 11)	LS	1	\$	\$
166	100	MOBILIZATION (SITE 12)	LS	1	\$	\$
167	100	MOBILIZATION (SITE 13)	LS	1	\$	\$
168	100	MOBILIZATION (SITE 14)	LS	1	\$	\$
169	100	MOBILIZATION (SITE 15)	LS	1	\$	\$
170	100	MOBILIZATION (SITE 16)	LS	1	\$	\$
171	100	MOBILIZATION (SITE 18)	LS	1	\$	\$
172	100	MOBILIZATION (SITE 20)	LS	1	\$	\$
173	100	MOBILIZATION (SITE 21)	LS	1	\$	\$
174	100	MOBILIZATION (SITE 22)	LS	1	\$	\$
175	100	MOBILIZATION (SITE 23)	LS	1	\$	\$
176	100	MOBILIZATION (SITE 24)	LS	1	\$	\$
177	100	MOBILIZATION (SITE 25)	LS	1	\$	\$
178	100	MOBILIZATION (SITE 26)	LS	1	\$	\$
179	100	MOBILIZATION (SITE 27)	LS	1	\$	\$
180	100	MOBILIZATION (SITE 28)	LS	1	\$	\$
181	100	MOBILIZATION (SITE 31)	LS	1	\$	\$
182	100	MOBILIZATION (SITE 32)	LS	1	\$	\$
183	100	MOBILIZATION (SITE 34)	LS	1	\$	\$
184	100	MOBILIZATION (SITE 35)	LS	1	\$	\$
185	100	MOBILIZATION (SITE 36)	LS	1	\$	\$
MOBILIZATION SUBTOTAL (MAX. 10% OF LINE ITEMS 1 - 157)*						\$

Item No.	Spec Item	Description	Unit	Quantity	Unit Price	Total
186	101	PREPARING RIGHT-OF-WAY (SITE 1)	LS	1	\$	\$
187	101	PREPARING RIGHT-OF-WAY (SITE 2)	LS	1	\$	\$
188	101	PREPARING RIGHT-OF-WAY (SITE 3)	LS	1	\$	\$
189	101	PREPARING RIGHT-OF-WAY (SITE 4)	LS	1	\$	\$
190	101	PREPARING RIGHT-OF-WAY (SITE 7)	LS	1	\$	\$
191	101	PREPARING RIGHT-OF-WAY (SITE 8)	LS	1	\$	\$
192	101	PREPARING RIGHT-OF-WAY (SITE 9)	LS	1	\$	\$
193	101	PREPARING RIGHT-OF-WAY (SITE 11)	LS	1	\$	\$
194	101	PREPARING RIGHT-OF-WAY (SITE 12)	LS	1	\$	\$
195	101	PREPARING RIGHT-OF-WAY (SITE 13)	LS	1	\$	\$
196	101	PREPARING RIGHT-OF-WAY (SITE 14)	LS	1	\$	\$
197	101	PREPARING RIGHT-OF-WAY (SITE 15)	LS	1	\$	\$
198	101	PREPARING RIGHT-OF-WAY (SITE 16)	LS	1	\$	\$
199	101	PREPARING RIGHT-OF-WAY (SITE 18)	LS	1	\$	\$
200	101	PREPARING RIGHT-OF-WAY (SITE 20)	LS	1	\$	\$
201	101	PREPARING RIGHT-OF-WAY (SITE 21)	LS	1	\$	\$
202	101	PREPARING RIGHT-OF-WAY (SITE 22)	LS	1	\$	\$
203	101	PREPARING RIGHT-OF-WAY (SITE 23)	LS	1	\$	\$
204	101	PREPARING RIGHT-OF-WAY (SITE 24)	LS	1	\$	\$
205	101	PREPARING RIGHT-OF-WAY (SITE 25)	LS	1	\$	\$
206	101	PREPARING RIGHT-OF-WAY (SITE 26)	LS	1	\$	\$
207	101	PREPARING RIGHT-OF-WAY (SITE 27)	LS	1	\$	\$
208	101	PREPARING RIGHT-OF-WAY (SITE 28)	LS	1	\$	\$
209	101	PREPARING RIGHT-OF-WAY (SITE 31)	LS	1	\$	\$
210	101	PREPARING RIGHT-OF-WAY (SITE 32)	LS	1	\$	\$
211	101	PREPARING RIGHT-OF-WAY (SITE 34)	LS	1	\$	\$
212	101	PREPARING RIGHT-OF-WAY (SITE 35)	LS	1	\$	\$
213	101	PREPARING RIGHT-OF-WAY (SITE 36)	LS	1	\$	\$
PREPARING ROW SUBTOTAL (MAX. 5% OF LINE ITEMS 1 - 157)**						\$
214	102.1	INTERMEDIATE DEMOBILIZATION AND REMOBILIZATION	EA	1	\$	\$
INTERMEDIATE DEMOBILIZATION AND REMOBILIZATION SUBTOTAL (ITEM 214)						\$
215	530.2	POLICE OFFICER (OFF-DUTY) ALLOWANCE (SITE 1,2,7,9,12,14,18,20,22,24,26,27,28, 32, & 34) (OWNER WRITTEN APPROVAL REQUIRED FOR PAYMENT)	ALW	1	\$ 312,000.00	\$ 312,000.00
216	864	BYPASS PUMPING (LARGE DIAMETER SANITARY SEWERS) - SITE NO. 9 (OWNER WRITTEN APPROVAL REQUIRED FOR PAYMENT)	ALW	1	\$ 48,330.00	\$ 48,330.00
217	864	BYPASS PUMPING (LARGE DIAMETER SANITARY SEWERS) - SITE NO. 12 (OWNER WRITTEN APPROVAL REQUIRED FOR PAYMENT)	ALW	1	\$ 48,330.00	\$ 48,330.00

Item No.	Spec Item	Description	Unit	Quantity	Unit Price	Total
218	864	BYPASS PUMPING (LARGE DIAMETER SANITARY SEWERS) - SITE NO. 16 (OWNER WRITTEN APPROVAL REQUIRED FOR PAYMENT)	ALW	1	\$ 35,630.00	\$ 35,630.00
219	864	BYPASS PUMPING (LARGE DIAMETER SANITARY SEWERS) - SITE NO. 26 (OWNER WRITTEN APPROVAL REQUIRED FOR PAYMENT)	ALW	1	\$ 43,405.00	\$ 43,405.00
220	864	BYPASS PUMPING (LARGE DIAMETER SANITARY SEWERS) - SITE NO. 28 (OWNER WRITTEN APPROVAL REQUIRED FOR PAYMENT)	ALW	1	\$ 27,580.00	\$ 27,580.00
221	3001	CPS ENERGY UTILITY POLE BRACING ALLOWANCE (OWNER WRITTEN APPROVAL REQUIRED FOR PAYMENT)	ALW	1	\$ 65,000.00	\$ 65,000.00
222	SP 3000	HANDLING ASBESTOS CEMENT PIPE (OWNER WRITTEN APPROVAL REQUIRED FOR PAYMENT)	ALW	1	\$ 29,325.00	\$ 29,325.00
223	SS 02120 ES	ENVIRONMENTAL SERVICES (SITE 11 AND SITE 15) (OWNER WRITTEN APPROVAL REQUIRED FOR PAYMENT)	ALW	1	\$ 100,000.00	\$ 100,000.00
224	SS 02120 EWM	ENVIRONMENTAL WASTE MANAGEMENT ALLOWANCE (SITE 11 AND 15) (OWNER WRITTEN APPROVAL REQUIRED FOR PAYMENT)	ALW	1	\$ 50,000.00	\$ 50,000.00
225	SS 1200	RELOCATION OF UTILITIES ALLOWANCE (OWNER WRITTEN APPROVAL REQUIRED FOR PAYMENT)	ALW	1	\$ 291,535.00	\$ 291,535.00
226	SS 9003	EXPLORATORY WORK ALLOWANCE (OWNER WRITTEN APPROVAL REQUIRED FOR PAYMENT)	ALW	1	\$ 50,000.00	\$ 50,000.00
ALLOWANCE SUBTOTAL (ITEMS 215 - 226)						\$ 1,101,135.00
*Mobilization lump sum bid shall be limited to a maximum 10% of the Line-Item Subtotal (Items 1-157) amount.						
**Preparing Right-of-Way lump sum bid shall be limited to a maximum of 5% of the Line-Item Subtotal (Items 1-157) amount.						
The Line Item Sub-total (Items 1-157) amount is defined as all bid items EXCLUDING Item 100, Mobilization, Item 101, Preparing Right-of-Way, Item 102.1, Item 530.2, Item 864, Item 3001, SP 3000, SS 02120 ES, SS 02120 EWM, SS 1200, SS 9003.						
In the event of a discrepancy between the written percentage and dollar amount shown for Mobilization and Preparation of ROW bid items the written percentage will govern. If the percentage written exceeds the allowable maximum stated for mobilization and or preparation of ROW, SAWS reserves the right to cap the amount at the percentages shown and adjust the extensions of the bid items accordingly.						
TOTAL BID PRICE (TO INCLUDE LINE ITEMS 1 - 226)					\$	

Special Conditions

SC 1.0 – PROJECT REQUIREMENTS

Contractor shall submit a completion report to SAWS when construction is completed. The completion report shall include but not limited to the following:

Pre and post MPEG-1 format and written to CD/DVD video and video logs.

Any test and/or submittals specified in this contract documents such as density tests, structural properties, etc. that are required.

SC 1.1 – PERFORMANCE TIME

PROJECT LOCATIONS AND MILESTONES: There are twenty-eight (28) Project Locations as part of this construction package each identified as a “Site No. XX” as shown on the location map in the plans.

- I. Final completion of all locations shall be achieved in **600 calendar days**. Project locations may be completed in any order at Contractor’s discretion except for the following prioritized project sites.

High priority sites listed below shall be completed no later than the start of planned CoSA street improvement projects within or adjacent to respective project limits. Contractor shall coordinate with CoSA to complete SAWS work before CoSA project start dates and confirm pavement restoration requirements prior to the start of CoSA IMP and/or Bond project.

Site No. 2 - Dignowity Ave, Site No. 20 - Roland Ave, Site No. 21 - Roland Ave, Site No. 22 - Kaiser Dr, Site No. 26 - Pecan Valley Dr, Site No. 28 – Zarzamora St, Site No. 34 - Pleasanton Rd, Site No. 35 Ware Blvd.

High priority sites listed below shall be started after all other high priority sites are completed due to the condition of the existing sanitary sewer main.

Site No. 13 – Orleans St & Arlene St

Low priority sites listed below shall be started after all other project sites have been completed or as approved by SAWS.

Site No. 8 - Buckberry

The order of construction shall be reflected in project detailed baseline schedule submittal.

SC 2.1 – SPECIFICATIONS

- I. All work performed shall be in accordance with the Contract Documents and the current San Antonio Water System Specifications for Water and Sanitary Sewer Construction, these Special Conditions, the current Texas Department of Transportation Standard Specification for Construction of Highways, Streets, and

Bridges, the current City of San Antonio Standard Specifications for Public Work Construction, City of San Antonio Utility Excavation Criteria Manual, or specifications and requirements of any other governing jurisdiction that may apply.

SC 2.2 – PAYMENT

- I. As specified in the Contract Documents unit price cost for the items bid shall include all the necessary and incidental work as subsidiary to the bid item, unless specifically called out in the plans or approved by SAWS. Pay items indicating no separate or additional pay for incidental, related, associated or other work will take precedence if in conflict with other pay provisions. If no pay item is included for any stipulated item, it will be considered as subsidiary to other pay items.
- II. It is the Contractor’s responsibility for the preparation, research, submittal and layout of the site-specific submittals, including, **but not limited to** the Storm Water Pollution Prevention Plan, Traffic Control Plan, the Bypass Pumping Plan, and its approvals at no cost to SAWS. If no pay item is included for any stipulated item, it will be considered as subsidiary to other pay items. The Tree Preservation Protection Permit(s) are obtained by the Engineer during final design. The contractor shall follow permit requirements, including the mandatory pre-construction meeting with the CoSA Arborist, and there will be no measurement or payment associated with the Tree Permit, unless otherwise noted. If applicable, there will be no measurement or payment for the Storm Water Pollution Prevention Plan or work.
- III. **Clearing and grubbing or tree pruning will be paid under Spec. Item 101 – Preparing Right-of-Way, as noted in the contract documents.**

SC 2.3 – ACCESS

- I. Right-of-Entry (ROE) Agreements will be required for access and work areas on Site No. 13 – Orleans St and Arlene St and No. 35 – Ware Blvd. The Contractor is advised that access areas have been defined in the ROE Exhibits “B”. SAWS obtained ROE Agreements (see attached). The Contractor shall carefully review these documents and shall closely coordinate with landowners and their tenants.

SC 2.4 – PERMITS

- I. Contractor shall be responsible for coordination and acquisition of all necessary CoSA permits for pre and post CCTV inspection of sewer mains and sewer and water improvements within the ROW where required.
- II. A TXDOT permit will be required for various sites within TXDOT right-of-way (ROW) and will be obtained by SAWS. Contractor shall notify SAWS at least 45 calendar days prior to conducting any work in the TXDOT ROW. The Contractor shall include the timeframe for notification(s) on the baseline construction schedule.
- III. Contractor shall not commence any work until all applicable permits are

obtained. The copies of these permits shall be kept on site at all times at a readily available location. Contractor shall abide by all permitting entities' requirements.

SAWS will obtain the following permits:

- Utility Installation Request/Right-of-Way (ROW) permit from TxDOT
- Flood Plain Development Permit from City of San Antonio (CoSA) Floodplain Management.
- Tree Affidavit Permit (TRE-PMT-23-38901158) with CoSA Arborist

Any other permits required to complete the work besides those listed above shall be the Contractor's responsibility including all application, review and issuance fees or other charges at no additional cost to SAWS.

SC 2.5 – CONCRETE DRIVEWAYS

- I. Contractor shall replace driveway to existing thickness or minimum thickness per CoSA Specification Item 503, whichever is greater. Driveway replacement includes removal and replacement of curb and sidewalk within driveway section as shown in the CoSA Concrete Driveway Standards, see plans, Sheet 137.

SC 2.6 – TREE PROTECTION & SITE RESTORATION

- I. The Contractor shall comply with all requirements set forth in the Tree Preservation Details Plan and Tree Inventory Table.
- II. The Contractor shall refer to approved USACE Section 408 Permit for site restoration at Site No. 8 – Buckberry.

SC 2.7 – VIA METROPOLITAN TRANSIT COORDINATION

- I. Various project sites are within VIA Metropolitan routes and bus stops including in the downtown area. Contractor to contact and coordinate with VIA Transit at (210) 362-5020 prior to construction for VIA bus route detour coordination and traffic control. See VIA Notes in plans, Sheet 6.

SC 2.8 – ADDITIONAL PROJECT REQUIREMENTS

- I. Site No. 1 – AT&T Center Pkwy
 - a. Project site is on or near a CoSA arterial street and may require Portable Changeable Message Boards, flaggers or off-duty police officers as part of the traffic control.
 - b. A water main adjustment may be necessary at this site and must be approved by SAWS for payment before the adjustment begins.
 - c. All required items for the Contractor's traffic control plan, including but not limited to barricades, portable changeable message boards, and flaggers will be compensated at the unit prices bid for the line items shown on the plans. Off-duty police officers must be approved by SAWS for payment on an

allowance basis.

II. Site No. 2 – Dignowity Ave

- a. Project site may require night and weekend work hours to complete sewer main rehabilitation during non-peak traffic hours.
- b. All required items for the Contractor's traffic control plan, including but not limited to barricades, portable changeable message boards, and flaggers will be compensated at the unit prices bid for the line items shown on the plans. Off-duty police officers must be approved by SAWS for payment on an allowance basis.
- c. Project site is within VIA metropolitan Bus Route 22 stop #63119 on Dignowity Ave and Walters St. Contractor to contact and coordinate with VIA Metropolitan Transit prior to construction for VIA bus route, coordination and traffic control. See VIA notes on sheet 6.

III. Site No. 7 – Wallace St

- a. Contractor shall coordinate at least two (2) weeks in advance with businesses whose driveways on Wallace St will be temporarily closed during SAWS construction activities and traffic control plan.
- b. The Contractor may be required to adjust a water main as necessary to complete the sanitary sewer improvements and will be compensated for the adjustment at the unit prices bid for water items shown on plans.
- c. All required items for the Contractor's traffic control plan, including but not limited to barricades, portable changeable message boards, and flaggers will be compensated at the unit prices bid for the line items shown on the plans. Off-duty police officers must be approved by SAWS for payment on an allowance basis.

IV. Site No. 8 – Buckberry

- a. This site shall be started after all other project sites have been completed or as approved by SAWS.
- b. This work site is under the terms and conditions of the USACE Permit 408 and Land Use Agreement with the San Antonio River Authority. Contractor shall minimize site disturbance during sewer bypass pumping operations and excavation for bore pits.
- c. Contractor to notify businesses adjacent to work area and the San Antonio River Authority of sewer main work at least 48 hours prior to start of construction.
- d. Contractor shall install and maintain temporary sediment control fencing along Alazan Creek prior to start of construction and remove upon completion of work.

- e. Contractor shall not encroach into trail and keep free of debris. Any damage to trail shall be replaced to existing or better condition (NSPI)
 - f. Contractor to Hydromulch per CoSA Specification Item 520 with its Special Provision, as noted in the contract documents.
- V. Site No. 9 – St. Mary’s and E. Cesar Chavez Blvd
- a. Project site may require night work to complete sewer main rehabilitation. Contractor to schedule work during non-peak traffic periods as directed by CoSA ROW, and during low sanitary sewer flow conditions . Contractor to coordinate with all impacted businesses and agencies in the area prior to start of work. Work may be limited between April 18-28, 2024 and November-January 01. Work shall be avoided during the San Antonio Rock ‘n’ Roll Marathon scheduled for December 7-8, 2024.
 - b. Project site is within the King William Historic District and will require coordination with the King William HOA and the Conservation Society of San Antonio prior to start of traffic control set up and construction. Night work between 8PM and 5AM Sunday through Thursday may be allowed. No on-site storage of material will be permitted.
 - c. Contractor shall coordinate with CoSA ROW, CoSA Arborist, and CoSA Parks Department for traffic control plan and pre-construction inspection prior to start set up of traffic control or construction. Contractor shall follow CoSA requirements for bypass pumping and traffic control setup and restoration required within the Don Pedro Huizar Garden Park.
 - d. Contractor shall coordinate traffic control plan with Downtown Emergency Management System (EMS) and Downtown VIA, King William HOA and The Conservation Society of San Antonio 14-days before traffic control is set up and construction is scheduled to begin.
 - e. Contractor shall restore brick median on E. Cesar Chavez Blvd. to original or better condition if disturbed due to sanitary sewer improvements (NSPI).
 - f. Contractor shall setup bypass pumping equipment on street level.
 - g. All required items for the Contractor’s traffic control plan, including but not limited to barricades, portable changeable message boards, and flaggers will be compensated at the unit prices bid for the line items shown on the plans. Off-duty police officers must be approved by SAWS for payment on an allowance basis.
- VI. Site No. 11 - Dome Dropoff Under Cesar Chavez Blvd.
- a. Contractor shall coordinate with Alamodome Event Center and contact Eric Duncan 210-207-3608 at least two (2) weeks in advance of construction to coordinate construction activities and traffic control plan. Contractor shall plan work accordingly to avoid impacts to Alamodome event schedule (NSPI).

- b. Contractor shall coordinate with Ready Ice (Jean Wade njwade@readyice.com) fourteen days prior to traffic control setup and construction activities (NSPI).
- c. Project limits are within areas with potentially contaminated media. Environmental Waste Management shall be provided in conformance with Technical Specification 02120 Waste Management, Transport, and Disposal. The cost and time impact for these services must be reviewed and approved by SAWS and Engineer prior to beginning any necessary cleanup activities. The terms of payment for the Contractor's services for waste management shall be in accordance with Special Specifications 02120 and 02140.
- d. Contractor shall not disturb or remove the chain link fence along the UPRR Right-of-Way.
- e. Damage to sanitary sewer pipe and/or manholes due to bypass pumping procedures will be the responsibility of the contractor and no additional compensation will be made for repairs to the sanitary sewer system.

VII. Site No. 12 - Nathan St.

- a. Contractor shall coordinate and comply with TxDOT requirements and inspector for all work within TxDOT ROW. Night work may be necessary to complete sanitary sewer main replacement and tie-in, manhole reconstruction, storm and pavement restoration within TxDOT ROW.
- b. Project site is within the Nathan Historic District and will require coordination with the Nathan HOA prior to s. Night work between 8PM and 5AM Sunday through Thursday may be allowed. No on-site storage of material will be permitted.
- c. Project site is within VIA Metropolitan Bus Route 46 on S. Alamo St. Contractor to contact and coordinate with Downtown VIA Metropolitan Transit prior to construction for VIA bus route detour coordination and traffic control. See VIA notes on Plan Sheet 6.
- d. Damage to sanitary sewer pipe and/or manholes due to bypass pumping procedures will be the responsibility of the contractor and no additional compensation will be made for repairs to the sanitary sewer system.
- e. A water main adjustment may be necessary at this site and must be approved by SAWS for payment on an allowance basis before the adjustment begins.
- f. All required items for the Contractor's traffic control plan, including but not limited to barricades, portable changeable message boards, and flaggers will be compensated at the unit prices bid for the line items shown on the plans. Off-duty police officers must be approved by SAWS for payment on an allowance basis.

VIII. Site No. 13 – Orleans St & Arlene St

- a. Site No. 13 is a priority site due to the condition of the existing sanitary sewer

main and should be completed after all other high priority sites.

- b. Orleans is a narrow residential street. Contractor shall coordinate in advance with residents parking off Orleans St to allow temporary parking on side streets while traffic control is set up in place for the proposed sanitary sewer reroute.
- c. The Contractor may be required to adjust a water main as necessary to complete the sanitary sewer improvements and will be compensated for the adjustment at the unit prices bid for water items shown on plans.

IX. Site No. 14 – Castroville Rd

- a. All required items for the Contractor's traffic control plan, including but not limited to barricades, portable changeable message boards, and flaggers will be compensated at the unit prices bid for the line items shown on the plans. Off-duty police officers must be approved by SAWS for payment on an allowance basis.

X. Site No. 15 – SAWS Medio Creek Facility

- a. Contractor shall obtain access badges with SAWS Security and shall coordinate with SAWS for access to the Medio Creek Facility at least two (2) weeks in advance prior to commencing construction activities.
- b. Contractor must limit all construction activities to be within the 16' Sanitary Sewer Easement shown on the plans.
- c. Project site may contain discarded fragments of asbestos pipe material. Any excavation within the extent of the project area should be conducted by a licensed asbestos abatement contractor under the Asbestos National Emission Standards for Hazardous Air Pollutants (NESHAP). Any asbestos containing pipe should be removed and disposed of accordingly by the asbestos abatement contractor and in accordance with SAWS Item 3000.
- d. Project limits are within areas with potentially contaminated media. Environmental Services and Environmental Waste Management shall be provided in conformance with Special Specifications 02120 Waste Management, Transport, and Disposal and 02140 Contaminated Soil and Water. The terms of payment for the Contractor's services for waste management shall be in accordance with Special Specifications 02120 and 02140.

XI. Site No. 16 – St Mary's and Vitra

- a. A water main adjustment may be necessary at this site and must be approved by SAWS for payment before the adjustment begins.

XII. Site No. 18 – S New Braunfels Alley

- a. Before construction begins, Contractor must verify that all property owners along alley can be reconnected as shown on the plans through dye testing or Pre-TV Inspection.

- b. All required items for the Contractor's traffic control plan, including but not limited to barricades, portable changeable message boards, and flaggers will be compensated at the unit prices bid for the line items shown on the plans. Off-duty police officers must be approved by SAWS for payment on an allowance basis.

XIII. Site No. 20 – Roland

- a. All required items for the Contractor's traffic control plan, including but not limited to barricades, portable changeable message boards, and flaggers will be compensated at the unit prices bid for the line items shown on the plans. Off-duty police officers must be approved by SAWS for payment on an allowance basis.

XIV. Site No. 22 – Kaiser Dr

- a. Contractor shall maintain construction and bypass activities within existing SAWS easement.
- b. Contractor to coordinate in advance with Terra Apartment management, as noted on the plans.
- c. The Contractor may be required to adjust a water main as necessary to complete the sanitary sewer improvements and will be compensated for the adjustment at the unit prices bid for water items shown on plans.
- d. All required items for the Contractor's traffic control plan, including but not limited to barricades, portable changeable message boards, and flaggers will be compensated at the unit prices bid for the line items shown on the plans. Off-duty police officers must be approved by SAWS for payment on an allowance basis.

XV. Site No. 24 – W Malone Ave

- a. Contractor must coordinate with Hillcrest Elementary School at least two weeks prior to construction for traffic control plan. Working hours when school is in session may be limited between the hours of 9AM and 5PM if permitted by SAWS Inspections. Contractor shall avoid impacts and access for pedestrian, vehicular and bus traffic as part of the traffic control operations.
- b. Contractor must coordinate and verify location of sanitary sewer bypass suction and discharge manholes and notify SAWS Inspections and Engineer of any issues identified.
- c. All required items for the Contractor's traffic control plan, including but not limited to barricades, portable changeable message boards, and flaggers will be compensated at the unit prices bid for the line items shown on the plans. Off-duty police officers must be approved by SAWS for payment on an allowance basis.

XVI. Site No. 25 – Foster Meadows

- a. The Contractor may be required to adjust a water main as necessary to complete the sanitary sewer improvements and will be compensated for the adjustment at the unit prices bid for water items shown on plans.

XVII. Site No. 26 – Pecan Valley

- a. Contractor must coordinate with Sinclair Elementary School Principal, Susanne Cluss at (210) 648-4620, and homeowners within construction limits at least 14 days prior to construction.
- b. All required items for the Contractor's traffic control plan, including but not limited to barricades, portable changeable message boards, and flaggers will be compensated at the unit prices bid for the line items shown on the plans. Off-duty police officers must be approved by SAWS for payment on an allowance basis.

XVIII. Site No. 27 – Division Ave

- a. All required items for the Contractor's traffic control plan, including but not limited to barricades, portable changeable message boards, and flaggers will be compensated at the unit prices bid for the line items shown on the plans. Off-duty police officers must be approved by SAWS for payment on an allowance basis.

XIX. Site No. 28 – Zarzamora St

- a. Contractor to coordinate with CoSA for scheduling work around Bond project located along S. Zarzamora St.
- b. All required items for the Contractor's traffic control plan, including but not limited to barricades, portable changeable message boards, and flaggers will be compensated at the unit prices bid for the line items shown on the plans. Off-duty police officers must be approved by SAWS for payment on an allowance basis.

XX. Site No. 32 – McLaughlin

- a. The Contractor may be required to adjust a water main as necessary to complete the sanitary sewer improvements and will be compensated for the adjustment at the unit prices bid for water items shown on plans.
- b. All required items for the Contractor's traffic control plan, including but not limited to barricades, portable changeable message boards, and flaggers will be compensated at the unit prices bid for the line items shown on the plans. Off-duty police officers must be approved by SAWS for payment on an allowance basis.

XXI. Site No. 34 – Pleasanton Rd

- a. All required items for the Contractor's traffic control plan, including but not

limited to barricades, portable changeable message boards, and flaggers will be compensated at the unit prices bid for the line items shown on the plans. Off-duty police officers must be approved by SAWS for payment on an allowance basis.

XXII. Site No. 35 – Ware Blvd

- a. The Ware Site is located within the CoSA 2026 Crack Seal Preservation Project (ID 4738) will need to be completed before the CoSA project begins.
- b. The Contractor may be required to adjust a water main as necessary to complete the sanitary sewer improvements and will be compensated for the adjustment at the unit prices bid for water items shown on plans.

SC 3.1 – NEARBY SCHOOLS IN PROJECT AREA

Contractor shall coordinate with all School Districts located within the project areas at least two (2) weeks prior to construction for traffic control plan setup. Working hours when school is in session may be limited to the summer months, or between the hours of 9 AM and 2 PM and after 5 PM while classes are in session, and as permitted by SAWS Inspections. Contractor shall avoid impacts and access for pedestrian, vehicular and bus traffic as part of the traffic control operations.

SC 3.2 – OTHER CONTRACTS

Other Construction may be underway concurrently in this area. Afford utility companies and other Contractors reasonable opportunity for introduction and storage of their materials and execution of their work. All work under this Contract must be properly connected and coordinated with that constructed by others. The Owner is not responsible for or liable for any claims resulting from delays by other Contractors or utility companies in the area regardless of the entity authorizing such work and any faulty workmanship resulting from such work performed.

SC 3.3 – INCIDENTAL CONSTRUCTION ITEMS

All items called out on the construction drawings or within the specifications which are not itemized in the bid proposal section of these documents shall be considered incidental to the cost of the project.

SC 3.4 – CITY OF SAN ANTONIO PARKS AND RECREATION DEPARTMENT

Contractor shall notify City of San Antonio Parks and Recreation Department (PARD) at (210) 207-2721 a minimum of two (2) weeks prior to starting construction and 48 hours prior to mobilizing equipment and to coordinate working hours. No separate pay item for the coordination effort.

SC 3.5 CPS ENERGY

Contractor shall perform site investigation for each of the Work Sites to confirm which of the project locations will require power pole bracing. The Contractor shall begin coordination efforts with CPS Energy immediately after Notice to Proceed is issued to avoid any construction delay. No separate pay item will be considered for this work and

coordination effort.

CONSENT DECREE NOTICE PROVISION

The San Antonio Water System (“SAWS”), the United States of America and the State of Texas have entered into a Consent Decree in Civil Action No. 5:13-cv-00666- DAE, United States of America and State of Texas v. San Antonio Water System, in the United States District Court for the Western District of Texas, San Antonio Division (the “Consent Decree”). A copy of the Consent Decree is available at

https://apps.saws.org/infrastructure/epa/docs/20131015_SAWS_EPA_FinalDecree.pdf

Work performed pursuant to this contract is work that SAWS is required to perform pursuant to the terms of the Consent Decree. In the event of any conflict between the terms and provisions of this Consent Decree Notice Provision and any other terms and provisions of this Contract or the Contract Documents, the terms and provisions of this Consent Decree Notice Provision shall prevail.

A. Retention of documents.

Contractor shall retain and preserve all non-identical copies of all documents, reports, research, analytical or other data, records or other information of any kind or character (including documents, records, or other information in electronic form including, but not limited to e-mails) in its or its sub-contractors’ or agents’ possession or control, or that come into its or its sub-contractors’ or agents’ possession or control, and that relate in any manner to this contract, or the performance of any work described in this contract (the “Information”). This retention requirement shall apply regardless of any contrary corporate or institutional policy or procedure or legal requirement. Contractor, Contractor’s sub-contractors and agents shall retain and shall not destroy any of the Information until such time as Contractor has received written approval from the General Counsel of SAWS that the Information or any part of the Information may be destroyed. Contractor shall, within 30 days after receipt of a written request by SAWS, deliver the Information to SAWS. Contractor shall instruct and require its agents and sub-contractors performing any part of the work described in this contract to comply with the requirements of this paragraph.

B. Notification of events that may cause delay.

If any event occurs that may delay performance by Contractor, or Contractor’s agents or sub-contractors of any work or obligation of any kind under this contract, Contractor shall provide notice in accordance with the Notice Provisions of this contract to SAWS within two (2) business days of the date Contractor or Contractor’s agents or sub-contractors first knew that the event might cause a delay. Contractor shall provide a written explanation and description of the reasons for the delay, the anticipated duration of the delay, all actions taken or to be taken to prevent or minimize the delay, and a schedule for implementation

of any measures to be taken to prevent or mitigate the delay or the effect of the delay. **TIME IS OF THE ESSENCE** in the performance of the requirements of this paragraph and of any work to be performed by the Contractor in this contract.

C. Liability for stipulated penalties.

The Consent Decree provides that the United States of America, the United States Environmental Protection Agency and the State of Texas may assess stipulated penalties against SAWS upon the occurrence of certain events. To the extent that Contractor or Contractor's agents or sub-contractors cause or contribute to, in whole or in part, the assessment of any stipulated penalty against SAWS, Contractor agrees that it shall pay to SAWS the full amount of any stipulated penalty assessed against and paid by SAWS that is caused or contributed to in whole or in part by any action, failure to act, or failure to act within the time required by any provision of this contract. Contractor shall also pay to SAWS all costs, attorney fees, expert witness fees and all other fees and expenses incurred by SAWS in connection with the assessment or payment of any such stipulated penalties, or in contesting the assessment or payment of any such stipulated penalties. In addition to any and all other remedies to which SAWS may be entitled at law or in equity, Contractor expressly authorizes SAWS to withhold all amounts assessed and paid as stipulated penalties, and all associated costs, fees, or expenses from any amount unpaid to Contractor under the terms of this contract, or from any retainage provided in the contract.

San Antonio Water System Special Specifications for Construction

**SS ITEM NO. 02120
WASTE MANAGEMENT, TRANSPORT, AND DISPOSAL**

PART 1 - GENERAL

1.01 SCOPE OF WORK

- A. This Specification includes materials management for temporary storage and final disposition selection at sites 11 and 15. Material management includes material segregation, characterization, manifesting, transporting, and disposal, including but not limited to, waste management practices for decontamination, waste loading, spill prevention and cleanup, permitting, and waste removal.

1.02 RELATED WORK

- A. Section 02140 Contaminated Soil and Water.

1.03 REFERENCE STANDARDS

- A. *Code of Federal Regulations, Title 40, Part 261 (40 CFR § 261)*. U.S. Government Printing Office, Washington, DC.
- B. *Code of Federal Regulations, Title 40, Part 761 (40 CFR § 761)*. U.S. Government Printing Office, Washington, DC.
- C. RG-022 – Texas Commission on Environmental Quality. Classifying and Coding of Industrial and Hazardous Wastes. Waste Permits Division.
- D. RG-029 – Texas Commission on Environmental Quality. Special Waste Regulations in Texas. Waste Permits Division.
- E. SW-846 - U.S. Environmental Protection Agency. *Test Methods for Evaluating Solid Waste, Physical/Chemical Methods, Vol. I*. Washington, DC.
- F. *Texas Administrative Code, Title 30, Chapter 25 (30 TAC § 25)*. Office of the Secretary of State, Austin, TX.
- G. *Texas Administrative Code, Title 30, Chapter 305 (30 TAC § 305)*. Office of the Secretary of State, Austin, TX.
- H. *Texas Administrative Code, Title 30, Chapter 330 (30 TAC § 330)*. Office of the Secretary of State, Austin, TX.
- I. *Texas Administrative Code, Title 30, Chapter 335 (30 TAC § 335)*. Office of the Secretary of State, Austin, TX.
- J. *Texas Administrative Code, Title 37, Chapter 16 (37 TAC § 16)*. Office of the Secretary of State, Austin, TX.
- K. *Texas Administrative Code, Title 37, Chapter 21 (37 TAC § 21)*. Office of the Secretary of State, Austin, TX.

San Antonio Water System Special Specifications for Construction

of State, Austin, TX.

1.04 DEFINITIONS

- A. Areas of Concern (AOC): An AOC is an area that is suspected to be contaminated.
- B. Contaminated Soil: Soil with constituents at concentrations above the Texas Commission on Environmental Quality (TCEQ) Texas Risk Reduction Program (TRRP) Tier 1 residential PCLs.
- C. Contaminated water: Water that contains constituents at concentrations above the Texas Commission on Environmental Quality (TCEQ) Texas Risk Reduction Program (TRRP) Residential Protective Concentration Levels (PCLs), USEPA Maximum Contaminant Limits (MCLs), or Texas Pollutant Discharge Elimination System (TPDES) requirements.

1.05 SUBMITTALS

- A. Submittals shall comply with the requirements in SAWS Specification Item No. 904.
- B. The CONTRACTOR shall submit the following for review by the ENGINEER.
 - 1. The name, address, phone number, and U.S. Environmental Protection Agency (EPA) identification number for each proposed off-site transporter of special waste or hazardous waste, as defined in 30 TAC §330.3, at least 2 weeks prior to mobilization.
 - 2. The name, address, phone number, and EPA identification number or State registration and/or permit number for each proposed storage, processing, or disposal facility at least 2 weeks prior to mobilization.
 - 3. Copies of the waste manifest signed by the generator, transporter(s), and disposal facility for each shipment of hazardous waste or nonhazardous Class 1 and Class 2 waste.
 - 4. Copies of the certificate of disposal and load or weight ticket for each hazardous waste or nonhazardous waste shipment.
 - 5. Analytical results and the resultant waste classification and Texas Commission on Environmental Quality (TCEQ) waste code for each waste shipment in accordance with the guidance document RG-022, Guidelines for the Classification and Coding of Industrial and Hazardous Wastes, dated February 2005.
- C. Obtain and submit disposal and transportation permits for proposed disposal sites if required by local ordinances.
- D. **CONTRACTOR shall submit a Waste Management Plan to the OWNER and ENGINEER** at least 2 weeks prior to mobilization. The Waste Management Plan shall include a description for managing, on-site storing, sampling, and characterizing waste material located within and outside of the AOCs.

San Antonio Water System Special Specifications for Construction

- E. CONTRACTOR shall submit the name, resume, and contact information for an environmental consultant(s) that will be responsible for providing environmental oversight, waste characterization, and air monitoring activities for construction within the AOCs.

1.06 QUALIFICATIONS

- A. Transport vehicle operators involved in off-site transportation shall possess commercial driver's licenses in accordance with applicable requirements in 37 TAC § 16.
- B. CONTRACTOR's Qualifications: The CONTRACTOR shall provide personnel who are trained in accordance with all applicable federal, state, and local statutes, regulations, rules, and ordinances for managing and transporting waste respective of the waste classification of hazardous or nonhazardous. The transportation of waste material shall be performed by a licensed, insured, and permitted transporter.
- C. Testing Laboratory Qualifications: The analytical laboratory will have Texas environmental laboratory accreditation/certification per 30 TAC Chapter 25.

1.07 REFERENCE STANDARDS

- A. The CONTRACTOR shall perform the Work in strict accordance with all applicable federal, state, and local statutes, regulations, rules, and ordinances, including, but not limited to, those pertaining to health and safety, environmental protection, and waste transportation and disposal.
- B. If a conflict exists between a federal, state or local statute, law, rule, regulation, or ordinance, the more stringent standard shall apply. Reference in this specification to a statute, law, regulation, rule, or ordinance does not relieve the CONTRACTOR or any Subcontractors from its obligation to comply with any and all other statutes, laws, regulations, rules, or ordinances which are applicable to the performance of the referenced task. The CONTRACTOR shall be responsible for any fines associated with the CONTRACTOR's failure to comply with applicable regulations.
- C. The CONTRACTOR shall comply with all applicable Texas Hazard Communications Act requirements, OSHA laws and regulations, including training requirements and safety practices as they relate to Contract operations. CONTRACTOR shall be responsible for the safety of its agents, employees, and Subcontractors (including its subcontractors' agents and employees).

PART 2 – PRODUCTS

2.01 MATERIALS

- A. Materials and equipment provided and/or used by the CONTRACTOR may be new or used but shall be in good condition and adequate in capacity and size for the intended usage. Materials and equipment provided and/or used by the CONTRACTOR shall not create unsafe conditions or cause cross contamination and shall meet the requirements of applicable codes and standards and shall be subject to approval by OWNER.

San Antonio Water System Special Specifications for Construction

- B. The CONTRACTOR shall provide all labor, materials, and equipment to collect and contain all contaminated water originating from vehicle, personnel, and equipment decontamination activities; all water that has otherwise come into contact with contaminated surfaces or landfill waste; contaminated groundwater; and any other water identified by the ENGINEER as being contaminated. All collected contaminated water will require on-site storage and sampling to determine disposal options.

2.02 TRUCK COVERS

- A. Covers for open transport vehicles shall be constructed from water-resistant material with sufficient strength to withstand wind loads during transit.
- B. Covers shall effectively prevent release of dust from the transport vehicle.
- C. Covers shall have tie-downs or other restraint mechanisms necessary to securely fasten them to the transport vehicle.

PART 3 - EXECUTION

3.01 GENERAL

- A. The CONTRACTOR shall abide by "Test Methods for Evaluating Solid Wastes", U.S. EPA, Office of Solid Waste and Emergency Response, Publication SW-846, if testing solid and hazardous wastes for disposal. The CONTRACTOR shall also abide by the "Guideline for the Classification and Coding of Industrial and Hazardous Wastes," TCEQ RG-022, Waste Permits Division, February 2005, or the latest revision available.
- B. Sample and analyze wastes upon generation in accordance with applicable requirements in SW- 846. Promptly and properly classify wastes in accordance with 40 CFR § 261; 30 TAC §330; 30 TAC § 335, Subchapter C and Subchapter R; and applicable regulatory policies and guidance documents including RG-022.
- C. The CONTRACTOR shall provide for review and signature by OWNER the proper waste profiling and manifest forms as required by applicable regulations (40 CFR Parts 262-263 and 761, and 30 TAC Chapter 335), prior to (a minimum of 72-hours prior to) transporting regulated waste.
- D. Properly dispose of wastes at the lowest cost, permissible, waste classification for the material to be disposed.
- E. If a disposal facility ceases to accept a waste, identify an alternate facility that complies with requirements in this section within 24-hours and notify ENGINEER of alternate facility.
- F. If notification of receipt of any waste shipment has not been received within 30 days after departure from the site, contact the facility to determine the status of the waste shipment. Resolve any discrepancies with the facility, and notify the OWNER regarding resolution of the discrepancies.
- G. Do not mix incompatible waste materials and use compatible waste containers.

San Antonio Water System Special Specifications for Construction

- H. Waste containers shall have liners to prevent leaks.
- I. The CONTRACTOR shall comply with the provisions of the appropriate City Ordinances. In no event shall the CONTRACTOR block any portion of the MS4 with fill. Should any blockage occur, the CONTRACTOR shall remove such fill, at CONTRACTOR's expense, as directed by the SAWS's COI.

3.02 MATERIALS STAGING

- A. The CONTRACTOR shall provide all labor, materials, and equipment to construct and maintain all staging areas, as required by these Specifications and applicable regulations for temporary storage. The CONTRACTOR shall provide all labor, materials, and equipment required to move materials to these staging areas for temporary storage, waste classification, and loading, and maintain the staging locations in good condition during those activities.
 - B. The CONTRACTOR shall provide all labor, materials, storage tanks, and equipment to manage and store all contaminated water. Under no circumstances shall the CONTRACTOR perform unauthorized contaminated water discharges in order to reduce the amount of contaminated water that the CONTRACTOR must collect and dispose.
- C. CONTRACTOR is responsible for coordinating with respective property owners for permissible staging areas.
- D. The CONTRACTOR shall construct and maintain all staging areas in a manner that is protective of the surrounding environment (including underlying concrete, asphalt pavement, water bodies, and soil).
- E. The CONTRACTOR shall stage contaminated soil in accordance with Section 02140 Contaminated Soil and Water.
- F. At all times during materials handling, the CONTRACTOR shall abide by applicable storage regulations for toxic materials, oil, and industrial and hazardous waste, including but not limited to 40 CFR Parts 112 and 261 and 30 TAC Chapter 335.
- G. The CONTRACTOR to avoid staging equipment and materials within the floodplain. Otherwise, Contractor shall apply for floodplain permit with CoSA (NSPI). No additional time for obtaining the permit will be compensated.

3.03 OFF-SITE NONHAZARDOUS WASTE DISPOSAL

- A. The CONTRACTOR shall be responsible for disposing of all non-hazardous material/substance as the term is defined in Article 1 of the SAWS General Conditions herein, including old concrete or any other non-hazardous material which is required to be removed from the project. Such material shall not be deposited in any sanitary sewer, creek, river, water course or municipal separate, storm sewer system, (MS4) as the term in defined herein.

San Antonio Water System Special Specifications for Construction

- B. Dispose of nonhazardous municipal solid waste and nonhazardous construction waste in accordance with applicable requirements of 30 TAC § 330.
- C. Comply with applicable industrial solid waste disposal requirements in 30 TAC § 335.
- D. Contaminated water shall be disposed off-site at a permitted facility according to federal, state, and local statutes, regulations, rules, and ordinances.

3.04 OFF-SITE HAZARDOUS WASTE DISPOSAL

- A. The CONTRACTOR shall be responsible for disposing of all hazardous materials/substances, as that term is defined in Article I of the SAWS General Conditions, in accordance with all applicable federal, state and local laws, and in accordance with any specific instructions set out in the plans and Specifications herein.
- B. Dispose of hazardous wastes at an off-site facility in compliance with applicable requirements in 30 TAC § 335.
- C. Dispose of construction debris and trash contaminated by hazardous wastes in accordance with hazardous waste disposal requirements in accordance with SS 02140 EWM.
- D. Contaminated water shall be disposed off-site at a permitted facility according to federal, state, and local statutes, regulations, rules, and ordinances.

3.05 SALVAGEABLE MATERIAL

Salvageable material as determined by the Specifications or the SAWS's Construction Observer/Inspector (COI) shall remain the property of SAWS and shall be relocated and stored by CONTRACTOR as directed by the SAWS's COI provided that such relocation and storage does not increase the Contract Sum to OWNER.

3.06 OFF-SITE TRANSPORTATION

- A. Provide transport vehicles that comply with applicable safety standards in 37 TAC §21. Do not load any transport vehicle in excess of its gross vehicle weight rating.
- B. Use only transporters with valid EPA identification numbers for off-site transportation of hazardous wastes.
- C. Comply with packaging, labeling, marking, placarding, and other applicable shipping requirements in 30 TAC § 335, Subchapter C.
- D. Remediate waste spillage in transit in accordance with applicable requirements of 30 TAC § 335.93, § 330.107, and other applicable federal, state, and local regulations at no additional cost.
- E. Comply with notification requirements for interstate transport of hazardous waste in 30 TAC § 335.75 if applicable.

San Antonio Water System Special Specifications for Construction

- F. Comply with applicable requirements for off-site transfer facilities in 30 TAC § 335.94.
- G. Restrict transport vehicles to allowable site ingress and egress routes.
- H. Control transport vehicles that enter or exit the site to avoid traffic disruptions.
- I. Do not allow transport vehicles to park on public roads in a manner that disrupts vehicular traffic.
- J. Inspect both interior and exterior surfaces of transport vehicles before they enter the site to ensure that they are visibly free of dirt and contaminants.
- K. Do not stage loaded transport vehicles on-site. Loaded transport vehicles shall leave the site immediately.
- L. Transport vehicles shall not drive through contaminated areas and shall stay on transport routes. If exterior becomes contaminated, decontaminate transport vehicles before they exit the site.
- M. Cover open transport vehicles before they exit the site in a manner that sheds rainwater.
- N. Do not remove covers until transport vehicles arrive at their off-site destination.
- O. Inspect transport vehicles before they exit the site.
 - 1. Wheels and undercarriage of transport vehicles shall be inspected to ensure that no visible soil or waste adheres to any surface.
 - 2. Tailgates shall be inspected to ensure that they are tightly sealed.
 - 3. Covers shall be inspected to ensure that they are securely fastened and no holes are present.
 - 4. Tank trucks shall be inspected to ensure that fittings are tightly sealed.
 - 5. No drips or leaks of any size shall be allowed from any transport vehicle.
- P. Comply with local transportation regulations, ordinances, and restrictions.
- Q. The CONTRACTOR shall not allow any regulated materials to be shipped off-site until the proper manifest forms for each given shipment have been signed by the generator. The CONTRACTOR shall provide OWNER with 72-hour notice of upcoming shipments so that manifests can be signed.

PART 4 - MEASUREMENT AND PAYMENT

4.01 MEASUREMENT AND PAYMENT

- A. Environmental Services.
 - 1. Environmental services by an environmental consultant(s) for air monitoring, waste characterization, reporting, and environmental oversight for construction within AOCs. Reporting shall include the preparation of the Waste Management

San Antonio Water System Special Specifications for Construction

Plan and the Final Environmental Summary Report. Work specified herein will be paid by allowance per the bid item below which price shall be full compensation for environmental services as specified in Special Specifications: 02120 Waste Management, Transport, and Disposal and 02140 Contaminated Soil and Water. Bid item shall include all costs for required equipment, supplies, and labor to perform the Work.

a. Item SS 02120.ES – Environmental Services – allowance

B. Environmental Waste Management

1. This item is an allowance item for Environmental Waste Management. It shall include contaminated waste transport to an authorized landfill for final disposition including disposal of contaminated media; all equipment, labor, fuel, incidentals, temporary storage, and materials necessary to remove, manage, handle, characterize, manifest, transport, and dispose of the contaminated media. Item shall also include landfill disposal fees. The cost and time impacts for these services shall be negotiated through Request for Proposal process. The terms of payment for the Contractor services shall be in accordance with the contract terms and conditions.

a. Item SS 02120.EWM – Environmental Waste Management – allowance

2. Nonhazardous Class 3 waste or construction and demolition debris will not be measured separately but is considered subsidiary to the various bid items of the contract.

-End of Specification-

SS 02120-8

ADDENDUM 5

2021 CMOM PACKAGE 6 - OPEN CUT AND PIPE BURST QUANTITY SUMMARY TABLE

Table with columns: ITEM, DESCRIPTION, ESTIMATED QUANTITIES, UNIT, TOTAL. Includes items like REMOVE CONCRETE CURB, PRIME COAT, HOT MIX ASPHALTIC PAVEMENT, etc.

Table with columns: ITEM, DESCRIPTION, UNIT, TOTAL. Includes items like 8" PVC SANITARY SEWER PIPE, 10" PVC SANITARY SEWER PIPE, 12" PVC SANITARY SEWER PIPE, etc.

NOTE: (1) DENOTED QUANTITY IN THE SUMMARY TABLE INCLUDES ADDITIONAL QUANTITY FOR CONTINGENCY PURPOSES, TO BE USED ONLY IF NECESSARY AND WITH PREVIOUS APPROVAL FROM SAWS.

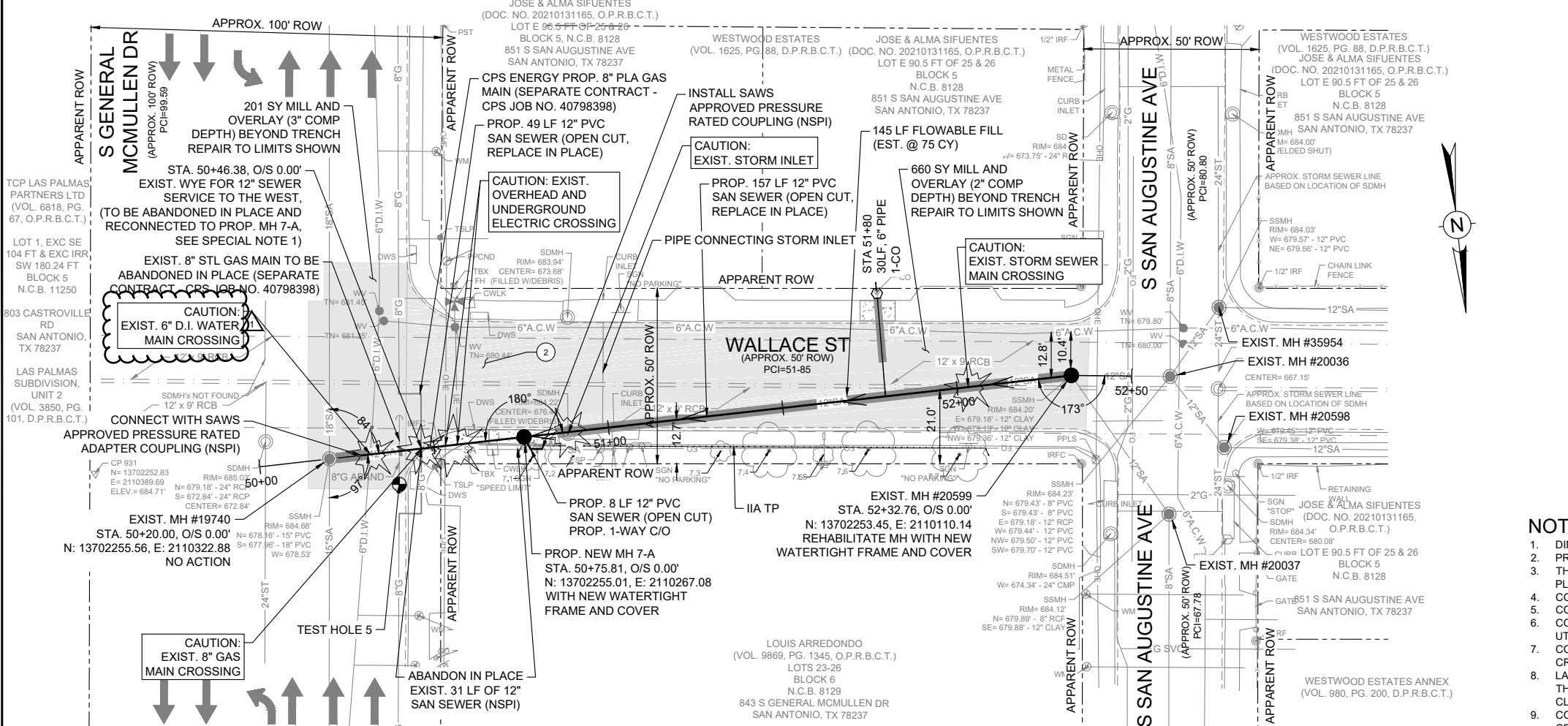
Table with columns: ITEM, DESCRIPTION, GENERAL ITEMS, UNIT, TOTAL. Includes items like MOBILIZATION (SITE 1), MOBILIZATION (SITE 2), etc.

FILE:02-03_G002-03-CMOM_OCPB_INDEX_QUANT_LEGD & QUANT_SUMM.dwg PLOTTED: 12/19/2023 4:10 PM BY: GONZALEZ, MANUEL

100% SUBMITTAL stamp, Professional Engineer seal for ELAIZA ALVAREZ, Lockwood, Andrews & Newman, Inc. logo, and project details including ADDENDUM NO. 5 and TRM/EMA/DATE.

TRENCH EXCAVATION SAFETY PROTECTION: CONTRACTOR AND/OR CONTRACTOR'S INDEPENDENTLY RETAINED EMPLOYEE OR STRUCTURAL DESIGN/GEOTECHNICAL/SAFETY EQUIPMENT CONSULTANT, IF ANY, SHALL REVIEW THESE PLANS AND ANY AVAILABLE GEOTECHNICAL INFORMATION AND THE ANTICIPATED INSTALLATION SITES(S) IN ORDER TO DEVELOP THE CONTRACTOR'S PLANS TO IMPLEMENT THE PROJECT DESCRIBED IN THE CONTRACT DOCUMENTS. THE CONTRACTOR'S PLANS SHALL PROVIDE FOR ADEQUATE TRENCH SAFETY SYSTEMS THAT COMPLY WITH, AS A MINIMUM, OSHA STANDARDS FOR TRENCH EXCAVATIONS. CONTRACTOR AND/OR CONTRACTOR'S INDEPENDENTLY RETAINED EMPLOYEE OR SAFETY CONSULTANT SHALL DEVELOP AND IMPLEMENT A TRENCH SAFETY PROGRAM IN ACCORDANCE WITH OSHA STANDARDS GOVERNING THE PRESENCE AND ACTIVITIES OF INDIVIDUALS WORKING IN AND AROUND TRENCH EXCAVATION.

CPS ENERGY NOTE: CALL THE TEXAS STATE WIDE ONE CALL LOCATOR NUMBER 1-800-344-8377, 48 HOURS BEFORE BEGINNING ANY EXCAVATION.

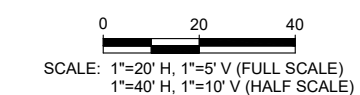
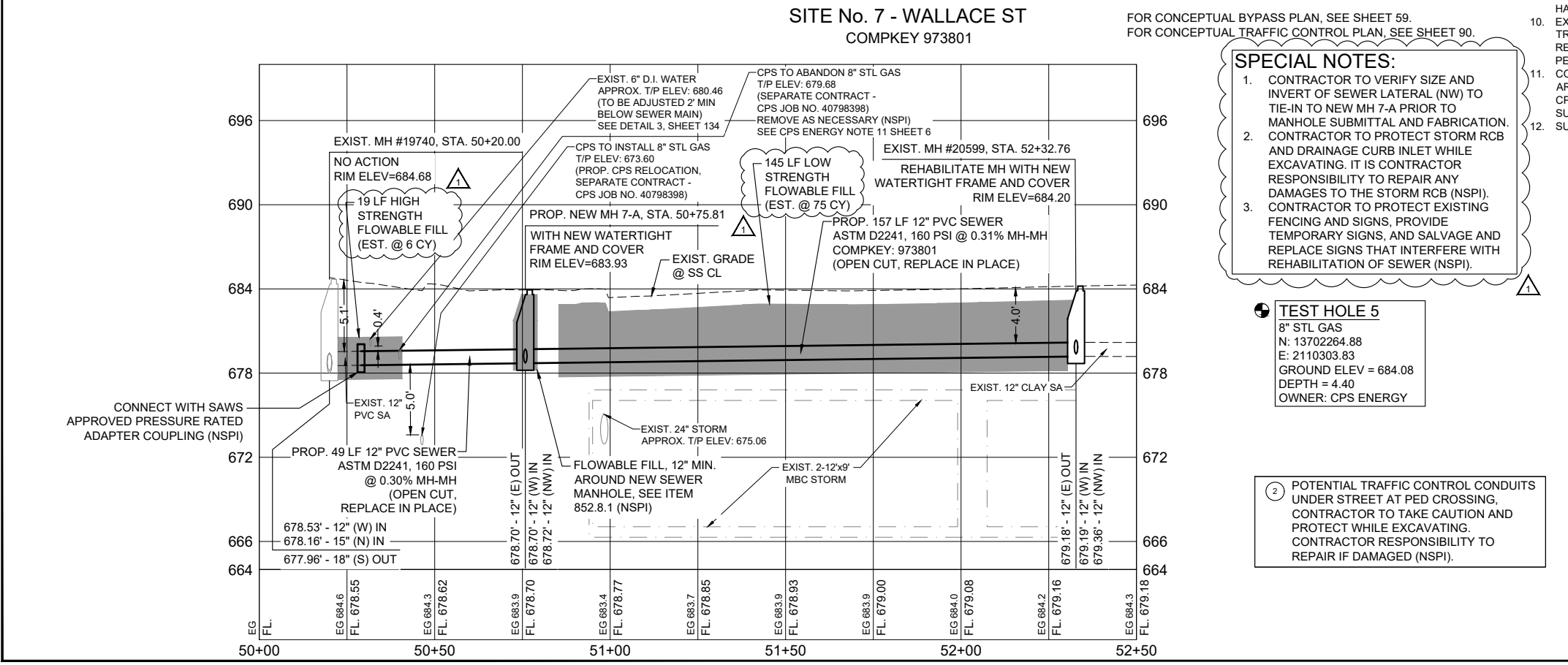


ESTIMATED QUANTITIES			
ITEM	DESCRIPTION	UNIT	QTY
103.1	REMOVE CONCRETE CURB (COSA SPEC)	LF	50
103.3	REMOVE CONCRETE SIDEWALKS & DRIVEWAYS (COSA SPEC)	SF	247
202.1	PRIME COAT (COSA SPEC)	GAL	11
203.1	TACK COAT (COSA SPEC)	GAL	86
205.2	HOT MIX ASPHALTIC PAVEMENT, TYPE B (10\"/>		

- NOTES:**
- DIMENSIONS ARE IN FEET UNLESS OTHERWISE NOTED.
 - PROPERTY LINES SHOWN ARE APPROXIMATE AND RIGHT-OF-WAY BOUNDARY LINE SHOWN IS APPARENT.
 - THE EXISTENCE AND LOCATION OF UTILITIES SHOWN ON THE PLAN ARE APPROXIMATE BASED ON THE AVAILABLE PLAN-OF-RECORD DRAWINGS AND ARE NOT GUARANTEED TO BE ACCURATE.
 - CONTRACTOR SHALL FIELD VERIFY ALL EXISTING AND PROPOSED DIMENSIONS PRIOR TO CONSTRUCTION (NSPI).
 - CONTRACTOR SHALL VERIFY LOCATIONS OF EXISTING LATERALS AND CLEANOUTS PRIOR TO CONSTRUCTION (NSPI).
 - CONTRACTOR SHALL EXPOSE AND VERIFY LOCATIONS, DEPTHS, DISTANCES, PIPE SIZES AND GRADES OF EXISTING UTILITIES PRIOR TO CONSTRUCTION (NSPI).
 - CONTRACTOR SHALL USE EXTREME CAUTION AND CARE WHEN UNCOVERING UTILITIES DESIGNATED BY CAUTION LOCATE CROSSING STAR ON PLANS, HAND DIGGING (NSPI) MAY BE NECESSARY.
 - LATERALS SHALL BE INSTALLED TO THE APPARENT ROW BOUNDARY LINE WITH CLEANOUT AND SAWS APPROVED THREADED CLEANOUT CAP (NSPI). TRAFFIC RATED CAST IRON FRAME AND GATE CAP (NSPI) REQUIRED FOR SEWER CLEANOUTS IN SIDEWALK OR DRIVEWAY AND PAVEMENT PER SAWS STANDARD DETAIL DD-854-02.
 - CONTRACTOR TO TAKE CAUTION WHILE EXCAVATING FOR SEWER MAIN AND LATERALS AT EXISTING GAS MAIN CROSSINGS AND EXPOSE AND PROTECT GAS MAINS AND GAS SERVICES WHERE CROSSING SEWER MAIN OR LATERALS, HAND DIGGING MAY BE NECESSARY (NSPI).
 - EXCAVATION IN THE VICINITY OF TREES SHALL PROCEED WITH CAUTION. HAND DIGGING (NSPI) MAY BE NECESSARY. TREES FOUND ON PRIVATE PROPERTY WITH BRANCHES THAT OVERHANG ONTO PUBLIC ROW, WHERE IDENTIFIED, MAY REQUIRE TRIMMING, PRUNING, AND ROOT PROTECTION FOR CONSTRUCTION AND SHALL FOLLOW THE APPROVED TREE PERMIT (NSPI).
 - CONTRACTOR TO TAKE CAUTION WHEN CONSTRUCTING NEAR EXISTING POWER POLES. WHENEVER POWER/TEL. POLES ARE (<5') FROM OUTSIDE OF POLE TO TRENCH OF UTILITY CONSTRUCTION THE CONTRACTOR SHALL COORDINATE WITH CPS TO PROVIDE PROPER SHORING, BRACING, AND/OR OTHER SUITABLE SUPPORT FOR THE POLES DURING CONSTRUCTION.
 - SURVEY PREPARED BY MAESTRAS & ASSOCIATES, LLC DATED SEPTEMBER, 2022.

SPECIAL NOTES:

- CONTRACTOR TO VERIFY SIZE AND INVERT OF SEWER LATERAL (NW) TO TIE-IN TO NEW MH 7-A PRIOR TO MANHOLE SUBMITTAL AND FABRICATION.
- CONTRACTOR TO PROTECT STORM RCB AND DRAINAGE CURB INLET WHILE EXCAVATING. IT IS CONTRACTOR RESPONSIBILITY TO REPAIR ANY DAMAGES TO THE STORM RCB (NSPI).
- CONTRACTOR TO PROTECT EXISTING FENCING AND SIGNS, PROVIDE TEMPORARY SIGNS, AND SALVAGE AND REPLACE SIGNS THAT INTERFERE WITH REHABILITATION OF SEWER (NSPI).



LEGEND

- PROP. SAN SEWER
- PROP. LATERAL WITH TWO WAY CLEAN OUT
- EXIST. WATER MAIN
- EXIST. GAS MAIN
- EXIST. SAN. SEWER
- EXIST. STORM SEWER
- OVER HEAD UTILITY
- EXIST. RIGHT OF WAY
- PROPERTY LINES
- EXIST. EOP WITH CURB
- EXIST. EOP WITHOUT CURB
- EXIST. TREES
- CONC. ENCASEMENT DRIVEWAY & SIDEWALK REPAIR
- FLOWABLE FILL
- MILL AND OVERLAY

100% SUBMITTAL

STATE OF TEXAS
ELAZA ALVAREZ
115095
PROFESSIONAL ENGINEER
12/28/2023

Lockwood, Andrews & Newman, Inc.
A LEAD AGENCY COMPANY
TBPE REGISTRATION NO.: F-2614

1	ADDENDUM NO. 5	TRM	EMA	12/28/23
NO.	REVISION	DRAWN	APPROVED	DATE

REVISIONS

2021 CMOM PACKAGE 6 - OPEN CUT AND PIPE BURST

SITE NO. 7 - COMPKEY 973801
WALLACE ST

DEVELOPER: _____
CONT. _____ BUDGET PROJ. _____

SUBMITTED _____
APPROVED _____

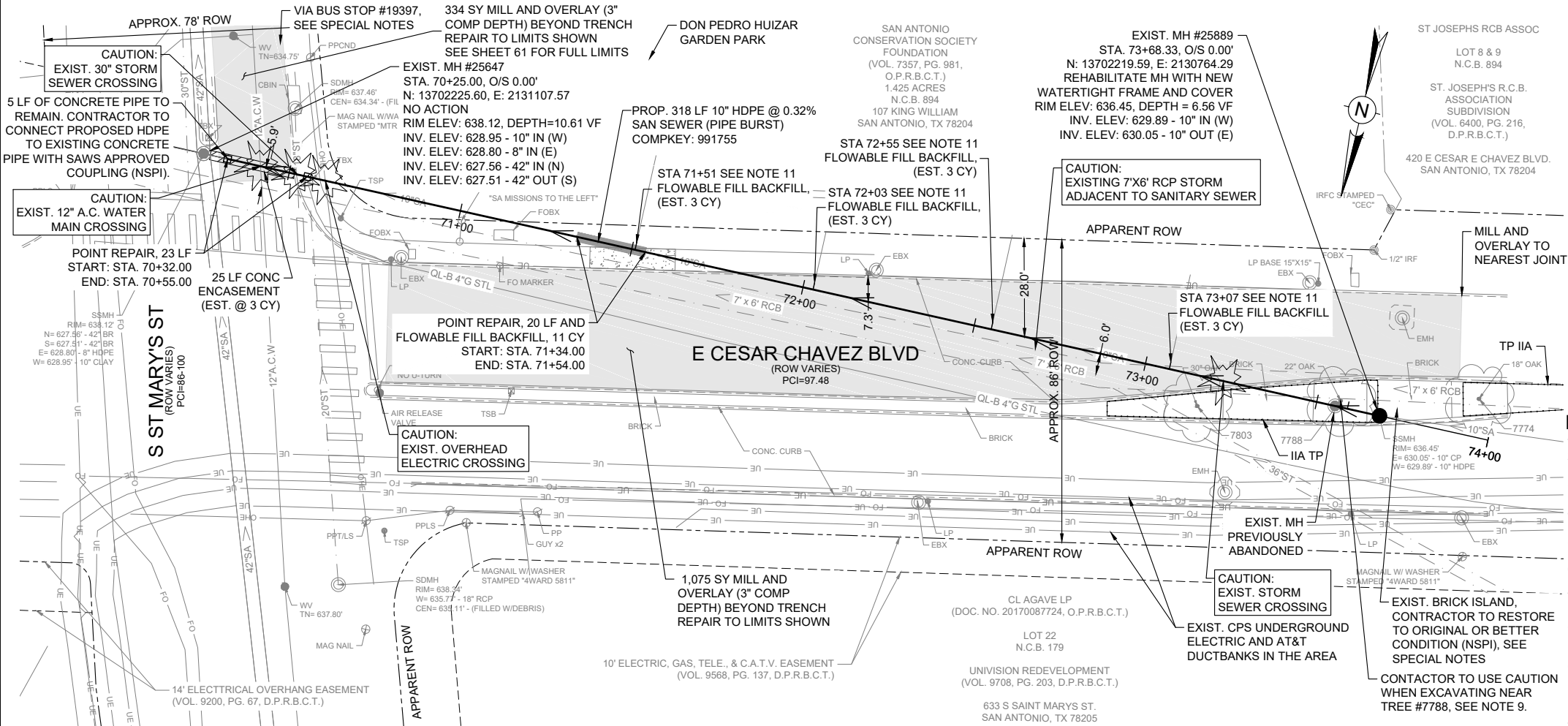
MAP NO. 140576 SHEET 24
SECT. NO. _____ OF 144

DR. TRM CK. EMA JOB NO. 22-4510

FILE01_CXXX-CMOM_COPB PLPR 1-8.dwg PLOTTED: 12/27/2023 12:14 PM BY: GONZALEZ, MANUEL

TRENCH EXCAVATION SAFETY PROTECTION: CONTRACTOR AND/OR CONTRACTOR'S INDEPENDENTLY RETAINED EMPLOYEE OR STRUCTURAL DESIGN/GEOTECHNICAL/SAFETY EQUIPMENT CONSULTANT, IF ANY, SHALL REVIEW THESE PLANS AND ANY AVAILABLE GEOTECHNICAL INFORMATION AND THE ANTICIPATED INSTALLATION SITES(S) IN ORDER TO DEVELOP THE CONTRACTOR'S PLANS TO IMPLEMENT THE PROJECT DESCRIBED IN THE CONTRACT DOCUMENTS. THE CONTRACTOR'S PLANS SHALL PROVIDE FOR ADEQUATE TRENCH SAFETY SYSTEMS THAT COMPLY WITH, AS A MINIMUM, OSHA STANDARDS FOR TRENCH EXCAVATIONS. CONTRACTOR AND/OR CONTRACTOR'S INDEPENDENTLY RETAINED EMPLOYEE OR SAFETY CONSULTANT SHALL DEVELOP AND IMPLEMENT A TRENCH SAFETY PROGRAM IN ACCORDANCE WITH OSHA STANDARDS GOVERNING THE PRESENCE AND ACTIVITIES OF INDIVIDUALS WORKING IN AND AROUND TRENCH EXCAVATION.

CPS ENERGY NOTE: CALL THE TEXAS STATE WIDE ONE CALL LOCATOR NUMBER 1-800-344-8377, 48 HOURS BEFORE BEGINNING ANY EXCAVATION.



SITE No. 9 - E CESAR CHAVEZ BLVD
 FOR CONCEPTUAL BYPASS PLAN, SEE SHEET 61.
 FOR CONCEPTUAL TRAFFIC CONTROL PLAN, SEE SHEET 92.
 COMPKEY 991755

ESTIMATED QUANTITIES			
ITEM	DESCRIPTION	UNIT	QTY
103.1	REMOVE CONCRETE CURB (COSA SPEC)	LF	30
103.3	REMOVE CONCRETE SIDEWALKS & DRIVEWAYS (COSA SPEC)	SF	147
202.1	PRIME COAT (COSA SPEC)	GAL	282
203.1	TACK COAT (COSA SPEC)	GAL	141
205.2	HOT MIX ASPHALTIC PAVEMENT, TYPE B (10" COMP DEPTH) (COSA SPEC)	SY	20
205.3	HOT MIX ASPHALTIC PAVEMENT, TYPE C (3" COMP DEPTH) (COSA SPEC)	SY	1409
208.1	SALVAGING, HAULING, AND STOCKPILING RECLAIMABLE ASPHALTIC PAVEMENT (3" DEPTH) (COSA SPEC)	SY	1409
299.2	FLOWABLE FILL (LOW STRENGTH)	CY	23
500.1	CONCRETE CURB (COSA SPEC)	LF	30
502.1	CONCRETE SIDEWALKS (COSA SPEC)	SY	17
530.1	BARRICADES, SIGNS, AND TRAFFIC HANDLING (COSA SPEC) - SITE NO. 9	EA	1
535.2	4 INCH WIDE WHITE LINE (COSA SPEC)	LF	120
535.4	8 INCH WIDE WHITE LINE (COSA SPEC)	LF	132
535.9	LEFT WHITE ARROW (COSA SPEC)	EA	2
535.12	WORD "ONLY" (PER WORD) (COSA SPEC)	EA	1
537.7	PAVEMENT MARKER (TYPE I-R) (COSA SPEC)	EA	21
858	CONCRETE ENCASUREMENT, CRADLES, SADDLES AND COLLARS	CY	2.6
865	BYPASS PUMPING (SMALL DIAMETER SANITARY SEWERS) - SITE NO. 9	EA	1
866	SANITARY SEWER MAIN PRE-TELEVISION INSPECTION (8"-15" DIA)	LF	343
900	PIPE-BURST 10" SANITARY SEWER PIPE (ALL DEPTHS)	LF	318
900.5	PIPE-BURST POINT REPAIRS (20 LF LENGTH) (ALL DEPTHS)	EA	4
900.5	PIPE-BURST POINT REPAIRS EXTRA LENGTH (ALL DEPTHS)	LF	3
900.6	PIPE-BURST OBSTRUCTION REMOVAL (ALL DEPTHS)	EA	1
910.1	MANHOLE REHABILITATION (STANDARD MANHOLES 4FT DIAMETER)	VF	7
1109.1	SERVICE RECONNECTION BY OPEN CUT EXCAVATION (ALL DEPTHS)	EA	5

- NOTES:**
- DIMENSIONS ARE IN FEET UNLESS OTHERWISE NOTED.
 - PROPERTY LINES SHOWN ARE APPROXIMATE AND RIGHT-OF WAY BOUNDARY LINE SHOWN IS APPARENT.
 - THE EXISTENCE AND LOCATION OF UTILITIES SHOWN ON THE PLAN ARE APPROXIMATE BASED ON THE AVAILABLE PLAN-OF-RECORD DRAWINGS AND ARE NOT GUARANTEED TO BE ACCURATE. CONTRACTOR SHALL FIELD VERIFY ALL EXISTING AND PROPOSED DIMENSIONS PRIOR TO CONSTRUCTION (NSPI).
 - CONTRACTOR SHALL VERIFY LOCATIONS OF EXISTING LATERALS AND CLEANOUTS PRIOR TO CONSTRUCTION (NSPI).
 - CONTRACTOR SHALL EXPOSE AND VERIFY LOCATIONS, DEPTHS, DISTANCES, PIPE SIZES AND GRADES OF EXISTING UTILITIES PRIOR TO CONSTRUCTION (NSPI).
 - CONTRACTOR SHALL USE EXTREME CAUTION AND CARE WHEN UNCOVERING UTILITIES DESIGNATED BY CAUTION LOCATE CROSSING STAR ON PLANS. HAND DIGGING (NSPI) MAY BE NECESSARY.
 - CONTRACTOR TO TAKE CAUTION WHILE EXCAVATING AND EXPOSE AND PROTECT GAS MAINS AND SERVICES WHERE CROSSING SEWER MAIN OR LATERALS PRIOR TO PIPE BURSTING, HAND DIGGING MAY BE NECESSARY (NSPI).
 - EXCAVATION IN THE VICINITY OF TREES SHALL PROCEED WITH CAUTION. HAND DIGGING (NSPI) MAY BE NECESSARY. TREES FOUND ON PRIVATE PROPERTY WITH BRANCHES THAT OVERHANG ONTO PUBLIC ROW, WHERE IDENTIFIED, MAY REQUIRE TRIMMING, PRUNING, AND ROOT PROTECTION FOR CONSTRUCTION AND SHALL FOLLOW THE APPROVED TREE PERMIT (NSPI).
 - CONTRACTOR TO TAKE CAUTION WHEN CONSTRUCTING NEAR EXISTING POWER POLES. WHENEVER POWER/TEL. POLES ARE (<5') FROM OUTSIDE OF POLE TO TRENCH OF UTILITY CONSTRUCTION THE CONTRACTOR SHALL COORDINATE WITH CPS TO PROVIDE PROPER SHORING, BRACING, AND/OR OTHER SUITABLE SUPPORT FOR THE POLES DURING CONSTRUCTION.
 - CONTRACTOR TO LOCATE, VERIFY AND RECONNECT SEWER LATERALS BY OPEN CUT EXCAVATION AT THE SEWER MAIN PER SAWS ITEM 1109.
 - SURVEY PREPARED BY MAESTAS & ASSOCIATES, LLC DATED SEPTEMBER, 2022.

- SPECIAL NOTES:**
- NIGHT WORK MAY BE REQUIRED FOR THIS PROJECT SITE TO COMPLETE SEWER MAIN REHABILITATION. CONTRACTOR TO SCHEDULE WORK DURING NON-PEAK TRAFFIC FLOW AND COORDINATE WITH ALL IMPACTED BUSINESSES AND AGENCIES IN THE AREA PRIOR TO START OF WORK.
 - PROJECT SITE IS WITHIN THE KING WILLIAM HISTORIC DISTRICT AND WILL REQUIRE COORDINATION WITH THE KING WILLIAM HOA PRIOR TO START OF CONSTRUCTION. NIGHT WORK BETWEEN 8PM AND 5AM SUNDAY TO THURSDAY MAY BE ALLOWED. NO ON-SITE STORAGE OF MATERIAL WILL BE PERMITTED.
 - CONTRACTOR SHALL COORDINATE WITH COSA ROW, ARBORIST AND PARKS DEPARTMENT FOR PRE-CONSTRUCTION INSPECTION PRIOR TO START OF CONSTRUCTION. CONTRACTOR SHALL FOLLOW COSA REQUIREMENTS FOR BYPASS & TRAFFIC CONTROL SETUP AND RESTORATION REQUIRED WITHIN THE DON PEDRO HUIZAR GARDEN PARK.
 - CONTRACTOR SHALL RESTORE BRICK ISLAND TO ORIGINAL OR BETTER CONDITION IF DISTURBED FROM SEWER MAIN CONSTRUCTION (NSPI). EXISTING BRICK MUST BE NUMBERED, SAFELY STORED OFF-SITE AND REPLACED IN THEIR ORIGINAL POSITION UPON COMPLETION OF WORK. OFFICE OF HISTORICAL PRESERVATION MAY BE CONTACTED AT (210) 207-0035 REGARDING THE EXISTING BRICKS TO BE REMOVED AND REPLACED AS NECESSARY.
 - PROJECT SITE IS WITHIN VIA METROPOLITAN BUS ROUTE 34, 42, 51 AND BUS STOP #19397 ON ST. MARY'S ST. CONTRACTOR TO CONTACT AND COORDINATE WITH DOWNTOWN VIA TRANSIT PRIOR TO CONSTRUCTION FOR VIA BUS ROUTE COORDINATION AND TRAFFIC CONTROL. SEE VIA NOTES ON SHEET 6.
 - ASBESTOS CEMENT (A.C.) PIPE, ALSO KNOWN AS TRANSITE PIPE AND WHICH IS KNOWN TO CONTAIN ASBESTOS CONTAINING MATERIAL (AMC) IS LOCATED WITHIN THE PROJECT LIMITS. CONTRACTOR SHALL USE EXTREME CAUTION AND CARE WHILE EXCAVATING FOR SEWER MAIN AS TO NOT DISTURB THE EXISTING 12" AC WATER MAIN AND TRENCH AND PROTECT AC WATER MAIN IF EXPOSED AS NECESSARY (NSPI). SPECIAL WASTE MANAGEMENT PROCEDURES AND HEALTH AND SAFETY REQUIREMENTS WILL BE APPLICABLE IF REMOVAL AND/OR DISTURBANCE OF THIS PIPE SHOULD OCCUR (NSPI).
 - THE TREE FENCE SHALL BE INSTALLED AT THE SOIL/BRICK INTERFACE IN THE MEDIAN TO PROTECT TREE #7788 AND #7774. NO IMPACTS ARE ALLOWED TO THE SOIL AND FENCED IN AREA AROUND THE TREES.
 - ADDITIONAL POINT REPAIRS MAY BE NECESSARY THAT ARE NOT SHOWN IN THE PLANS DUE TO THE INABILITY TO CCTV THE FULL SANITARY SEWER SEGMENT. TWO ADDITIONAL POINT REPAIRS HAVE BEEN INCLUDED IN THE ESTIMATED QUANTITIES.

100% SUBMITTAL

0 20 40
 SCALE: 1"=20' (FULL SCALE)
 1"=40' (HALF SCALE)

LEGEND

- PROP. SAN SEWER
- PROP. LATERAL WITH TWO WAY CLEAN OUT
- EXIST. WATER MAIN
- EXIST. GAS MAIN
- EXIST. SAN. SEWER
- EXIST. STORM SEWER
- OVER HEAD UTILITY
- EXIST. RIGHT OF WAY
- PROPERTY LINES
- EXIST. EOP WITH CURB
- EXIST. EOP WITHOUT CURB
- EXIST. TREES
- CONC. ENCASUREMENT DRIVEWAY & SIDEWALK REPAIR
- FLOWABLE FILL
- MILL AND OVERLAY

Lockwood, Andrews & Newnam, Inc.
 A LEO A DALY COMPANY
 TBPE REGISTRATION NO.: F-2614

1	ADDENDUM NO. 5	TRM	EMA	12/28/23
NO.	REVISION	DRAWN	APPROVED	DATE

REVISIONS

2021 CMOM PACKAGE 6 - OPEN CUT AND PIPE BURST
 SITE NO. 9 - COMPKEY 991755
 E CESAR CHAVEZ BLVD

DEVELOPER: _____
 CONT. BUDGET PROJ. _____

SUBMITTED _____
 APPROVED _____

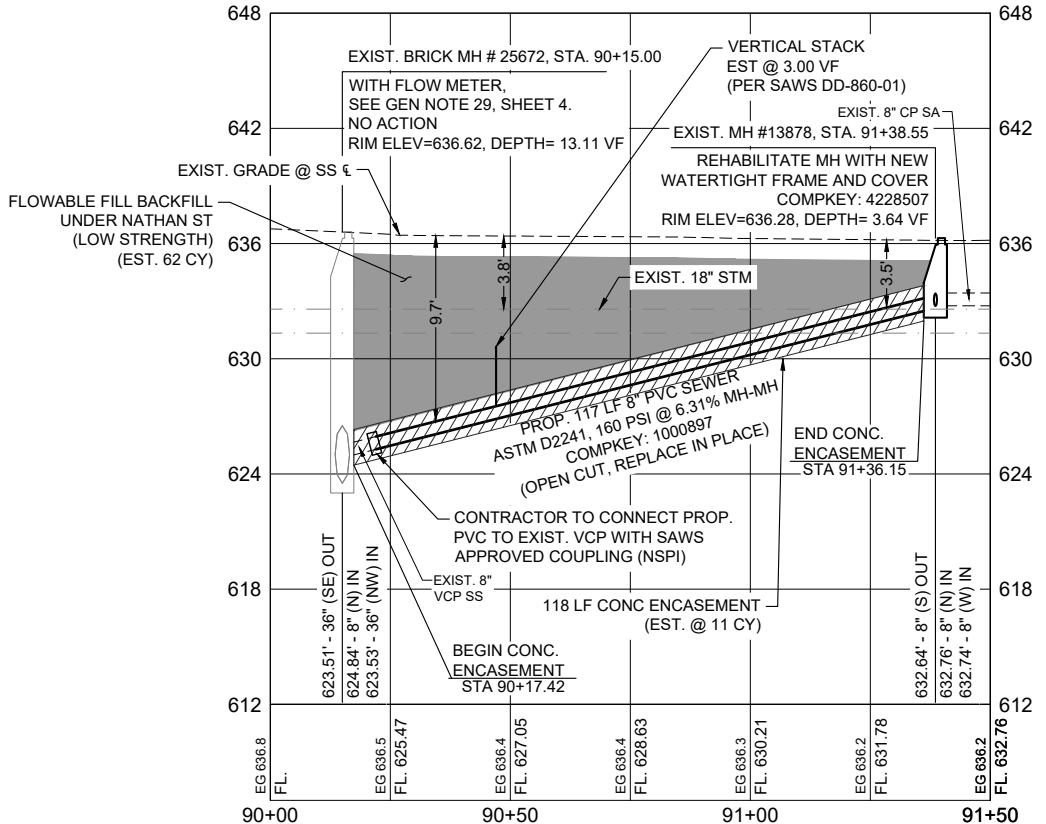
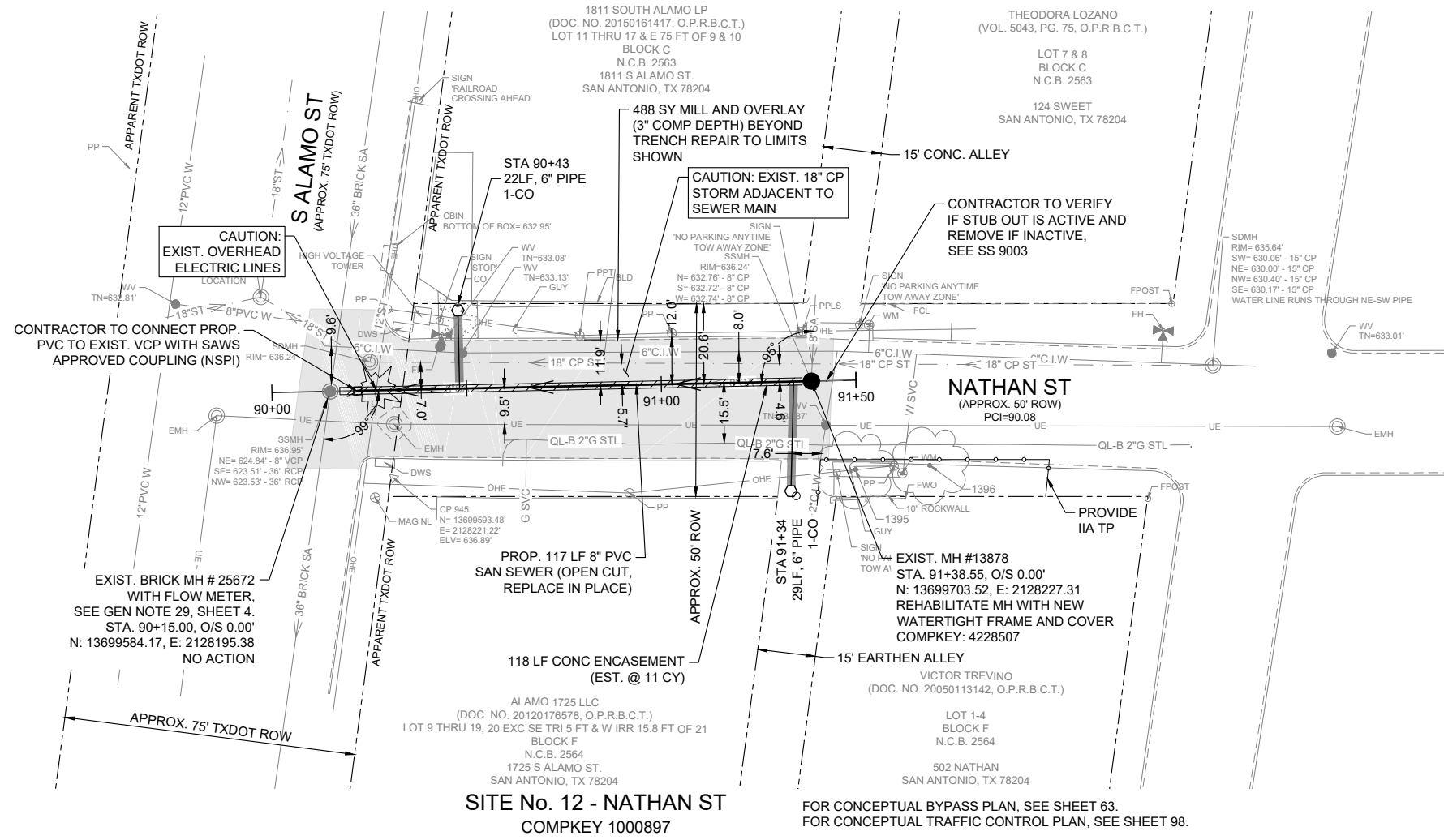
MAP NO. 162576 SHEET 27
 SECT. NO. _____
 DR. TRM CK. EMA JOB NO. 22-4510 OF 144

FILE:02_CXXX-CMOM_COPB PLPR 9-15.dwg PLOTTED: 12/20/2023 12:08 PM BY: GONZALEZ, MANUEL

TRENCH EXCAVATION SAFETY PROTECTION: CONTRACTOR AND/OR CONTRACTOR'S INDEPENDENTLY RETAINED EMPLOYEE OR STRUCTURAL DESIGN/GEOTECHNICAL/SAFETY EQUIPMENT CONSULTANT, IF ANY, SHALL REVIEW THESE PLANS AND ANY AVAILABLE GEOTECHNICAL INFORMATION AND THE ANTICIPATED INSTALLATION SITES(S) IN ORDER TO DEVELOP THE CONTRACTOR'S PLANS TO IMPLEMENT THE PROJECT DESCRIBED IN THE CONTRACT DOCUMENTS. THE CONTRACTOR'S PLANS SHALL PROVIDE FOR ADEQUATE TRENCH SAFETY SYSTEMS THAT COMPLY WITH, AS A MINIMUM, OSHA STANDARDS FOR TRENCH EXCAVATIONS. CONTRACTOR AND/OR CONTRACTOR'S INDEPENDENTLY RETAINED EMPLOYEE OR SAFETY CONSULTANT SHALL DEVELOP AND IMPLEMENT A TRENCH SAFETY PROGRAM IN ACCORDANCE WITH OSHA STANDARDS GOVERNING THE PRESENCE AND ACTIVITIES OF INDIVIDUALS WORKING IN AND AROUND TRENCH EXCAVATION.
CPS ENERGY NOTE: CALL THE TEXAS STATE WIDE ONE CALL LOCATOR NUMBER 1-800-344-8377, 48 HOURS BEFORE BEGINNING ANY EXCAVATION.

ESTIMATED QUANTITIES			
ITEM	DESCRIPTION	UNIT	QTY
103.1	REMOVE CONCRETE CURB (COSA SPEC)	LF	10
103.3	REMOVE CONCRETE SIDEWALKS & DRIVEWAYS (COSA SPEC)	SF	102
202.1	PRIME COAT (COSA SPEC)	GAL	98
203.1	TACK COAT (COSA SPEC)	GAL	49
205.2	HOT MIX ASPHALTIC PAVEMENT, TYPE B (10" COMP DEPTH) (COSA SPEC)	SY	51
205.3	HOT MIX ASPHALTIC PAVEMENT, TYPE C (3" COMP DEPTH) (COSA SPEC)	SY	488
208.1	SALVAGING, HAULING, AND STOCKPILING RECLAIMABLE ASPHALTIC PAVEMENT (3" DEPTH) (COSA SPEC)	SY	488
299	FLOWABLE FILL (HIGH STRENGTH)	CY	9
299.2	FLOWABLE FILL (LOW STRENGTH)	CY	62
500.1	CONCRETE CURB (COSA SPEC)	LF	10
502.1	CONCRETE SIDEWALKS (COSA SPEC)	SY	12
530.1	BARRICADES, SIGNS, AND TRAFFIC HANDLING (TXDOT SPEC) - SITE NO. 12	EA	1
535.1	4 INCH WIDE YELLOW LINE (COSA SPEC)	LF	130
535.2	4 INCH WIDE WHITE LINE (COSA SPEC)	LF	40
550	TRENCH EXCAVATION SAFETY PROTECTION	LF	124
848	8" PVC SANITARY SEWER PIPE (SDR 26, ASTM D2241) (ALL DEPTHS)	LF	117
854.1	SANITARY SEWER LATERALS (SDR 26, ASTM 2241, 160 PSI)	LF	51
854.2	TWO-WAY SANITARY SEWER CLEAN-OUT	EA	2
858	CONCRETE ENCASEMENT, CRADLES, SADDLES AND COLLARS	CY	11
860	VERTICAL STACKS	VF	3
865	BYPASS PUMPING (SMALL DIAMETER SANITARY SEWERS) - SITE NO. 12	EA	1
866	SANITARY SEWER MAIN PRE-TELEVISION INSPECTION (8"-15" DIA)	LF	124
866	SANITARY SEWER MAIN POST-TELEVISION INSPECTION (8"-15" DIA)	LF	124
910.1	MANHOLE REHABILITATION (STANDARD MANHOLES 4FT DIAMETER)	VF	4
6001	PORTABLE CHANGEABLE MESSAGE SIGN (TXDOT SPEC)	EA	2

- NOTES:**
- DIMENSIONS ARE IN FEET UNLESS OTHERWISE NOTED.
 - PROPERTY LINES SHOWN ARE APPROXIMATE AND RIGHT-OF-WAY BOUNDARY LINE SHOWN IS APPARENT.
 - THE EXISTENCE AND LOCATION OF UTILITIES SHOWN ON THE PLAN ARE APPROXIMATE BASED ON THE AVAILABLE PLAN-OF-RECORD DRAWINGS AND ARE NOT GUARANTEED TO BE ACCURATE.
 - CONTRACTOR SHALL FIELD VERIFY ALL EXISTING AND PROPOSED DIMENSIONS PRIOR TO CONSTRUCTION (NSPI).
 - CONTRACTOR SHALL VERIFY LOCATIONS OF EXISTING LATERALS AND CLEANOUTS PRIOR TO CONSTRUCTION (NSPI).
 - CONTRACTOR SHALL EXPOSE AND VERIFY LOCATIONS, DEPTHS, DISTANCES, PIPE SIZES AND GRADES OF EXISTING UTILITIES PRIOR TO CONSTRUCTION (NSPI).
 - CONTRACTOR SHALL USE EXTREME CAUTION AND CARE WHEN UNCOVERING UTILITIES DESIGNATED BY CAUTION LOCATE CROSSING STAR ON PLANS, HAND DIGGING (NSPI) MAY BE NECESSARY.
 - LATERALS SHALL BE INSTALLED TO THE APPARENT ROW BOUNDARY LINE WITH CLEANOUT AND SAWS APPROVED THREADED CLEANOUT CAP (NSPI). TRAFFIC RATED CAST IRON FRAME AND GATE CAP (NSPI) REQUIRED FOR SEWER CLEANOUTS IN SIDEWALK OR DRIVEWAY AND PAVEMENT PER SAWS STANDARD DETAIL DD-854-02.
 - CONTRACTOR TO TAKE CAUTION WHILE EXCAVATING FOR SEWER MAIN AND LATERALS AT EXISTING GAS MAIN CROSSINGS AND EXPOSE AND PROTECT GAS MAINS AND GAS SERVICES WHERE CROSSING SEWER MAIN OR LATERALS, HAND DIGGING MAY BE NECESSARY (NSPI).
 - EXCAVATION IN THE VICINITY OF TREES SHALL PROCEED WITH CAUTION, HAND DIGGING (NSPI) MAY BE NECESSARY. TREES FOUND ON PRIVATE PROPERTY WITH BRANCHES THAT OVERHANG ONTO PUBLIC ROW, WHERE IDENTIFIED, MAY REQUIRE TRIMMING, PRUNING, AND ROOT PROTECTION FOR CONSTRUCTION AND SHALL FOLLOW THE APPROVED TREE PERMIT (NSPI).
 - CONTRACTOR TO TAKE CAUTION WHEN CONSTRUCTING NEAR EXISTING POWER POLES. WHENEVER POWER/TEL. POLES ARE (<5') FROM OUTSIDE OF POLE TO TRENCH OF UTILITY CONSTRUCTION THE CONTRACTOR SHALL COORDINATE WITH CPS TO PROVIDE PROPER SHORING, BRACING, AND/OR OTHER SUITABLE SUPPORT FOR THE POLES DURING CONSTRUCTION.
 - SURVEY PREPARED BY MAESTAS & ASSOCIATES, LLC DATED SEPTEMBER, 2022.



SPECIAL NOTES:

- CONTRACTOR SHALL COORDINATE AND COMPLY WITH TXDOT REQUIREMENTS AND INSPECTOR INSTRUCTIONS FOR ALL WORK WITHIN TXDOT ROW. NIGHT WORK MAY BE NECESSARY TO COMPLETE SEWER MAIN REHABILITATION WITHIN TXDOT ROW. PROJECT SITE IS WITHIN THE NATHAN HISTORIC DISTRICT. NIGHT WORK BETWEEN 5PM AND 8AM SUNDAY TO THURSDAY MAY BE ALLOWED. NO ON-SITE STORAGE OF MATERIAL WILL BE PERMITTED.
- PROJECT SITE IS WITHIN VIA METROPOLITAN BUS ROUTE 46 ON S. ALAMO ST. CONTRACTOR TO CONTACT AND COORDINATE WITH DOWNTOWN VIA TRANSIT PRIOR TO CONSTRUCTION FOR VIA BUS ROUTE COORDINATION AND TRAFFIC CONTROL. SEE VIA NOTES ON SHEET 6.
- CONTRACTOR SHALL USE CAUTION WHEN EXCAVATING NEAR EXISTING BRICK MANHOLE AND RECONNECTING PROPOSED SANITARY SEWER MAIN.
- CONTRACTOR TO EXPOSE 8" SANITARY SEWER MAIN FOR EXISTING BRICK MH 25672 TO APPROXIMATELY 10 FEET UPSTREAM.

100% SUBMITTAL

SCALE: 1"=20' H, 1"=5' V (FULL SCALE)
 1"=40' H, 1"=10' V (HALF SCALE)

LEGEND

- PROP. SAN SEWER
- PROP. LATERAL WITH TWO WAY CLEAN OUT
- EXIST. WATER MAIN
- EXIST. GAS MAIN
- EXIST. SAN. SEWER
- EXIST. STORM SEWER
- OVER HEAD UTILITY
- EXIST. RIGHT OF WAY
- PROPERTY LINES
- EXIST. EOP WITH CURB
- EXIST. EOP WITHOUT CURB
- EXIST. TREES
- CONC. ENCASEMENT DRIVEWAY & SIDEWALK REPAIR
- FLOWABLE FILL
- MILL AND OVERLAY

STATE OF TEXAS
ELAZA ALVAREZ
 115095
 LICENSED PROFESSIONAL ENGINEER
 12/28/2023

Lockwood, Andrews & Newnam, Inc.
 A LEO A DALY COMPANY
 TBPE REGISTRATION NO.: F-2614

1	ADDENDUM NO. 5	TRM	EMA	12/28/23
NO.	REVISION	DRAWN	APPROVED	DATE

REVISIONS

2021 CMOM PACKAGE 6 - OPEN CUT AND PIPE BURST
 SITE NO. 12 - COMPKEY 1000897
 NATHAN ST

DEVELOPER: _____
 CONT. _____ BUDGET PROJ. _____

SUBMITTED _____
 APPROVED _____

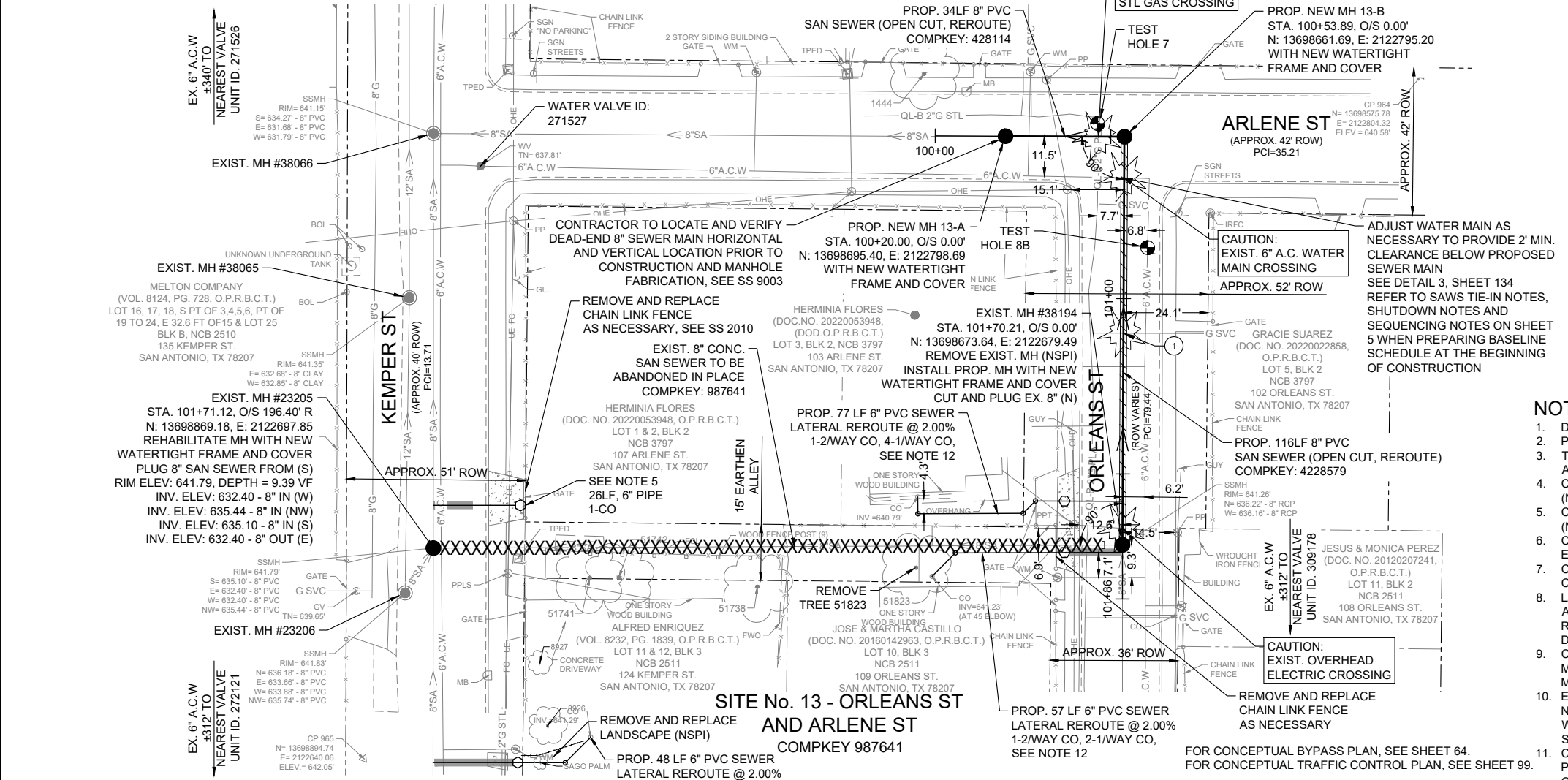
MAP NO. 158572 SHEET 29
 SECT. NO. _____ OF 144
 DR. TRM CK. EMA JOB NO. 22-4510

FILE:02_CXXX-CMOM_OCPB PLPR 9-15.dwg PLOTTED: 12/18/2023 8:56 AM BY: MOHRE, TYLER

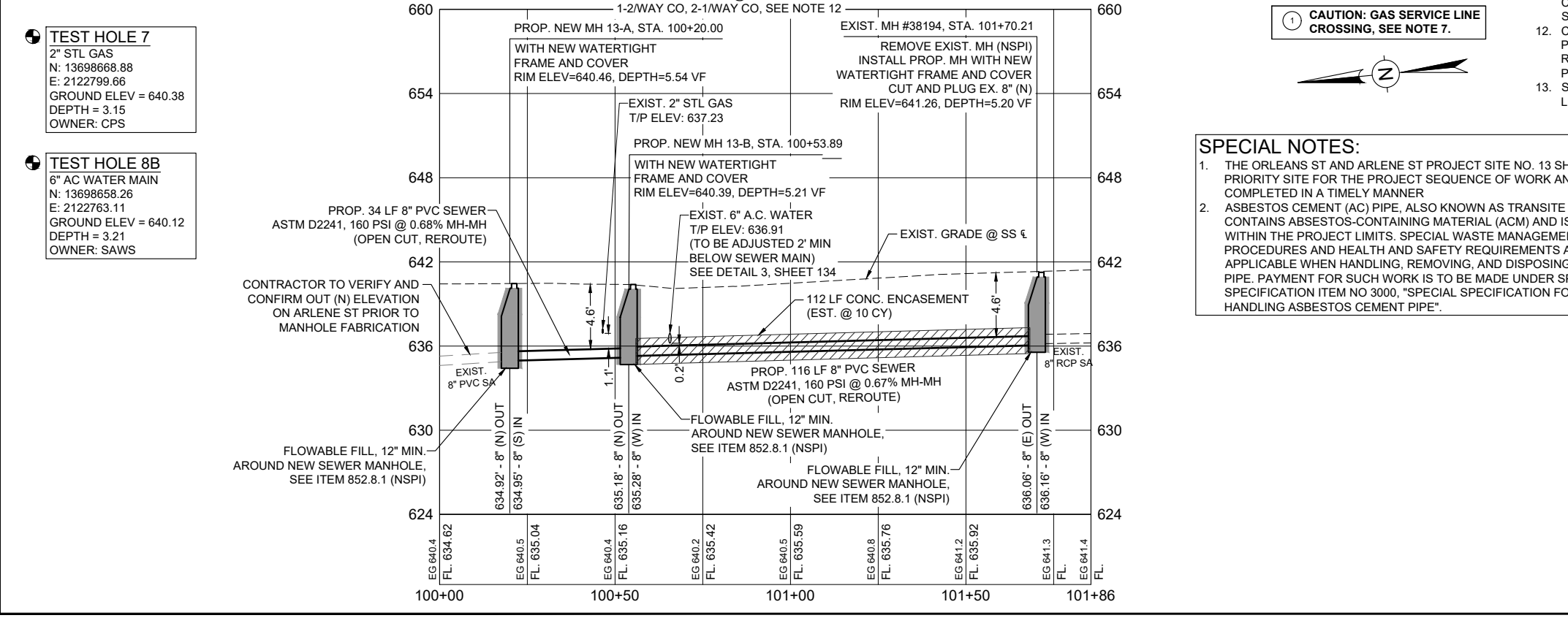
TRENCH EXCAVATION SAFETY PROTECTION: CONTRACTOR AND/OR CONTRACTOR'S INDEPENDENTLY RETAINED EMPLOYEE OR STRUCTURAL DESIGN/GEOTECHNICAL/SAFETY EQUIPMENT CONSULTANT, IF ANY, SHALL REVIEW THESE PLANS AND ANY AVAILABLE GEOTECHNICAL INFORMATION AND THE ANTICIPATED INSTALLATION SITES(S) IN ORDER TO DEVELOP THE CONTRACTOR'S PLANS TO IMPLEMENT THE PROJECT DESCRIBED IN THE CONTRACT DOCUMENTS. THE CONTRACTOR'S PLANS SHALL PROVIDE FOR ADEQUATE TRENCH SAFETY SYSTEMS THAT COMPLY WITH, AS A MINIMUM, OSHA STANDARDS FOR TRENCH EXCAVATIONS. CONTRACTOR AND/OR CONTRACTOR'S INDEPENDENTLY RETAINED EMPLOYEE OR SAFETY CONSULTANT SHALL DEVELOP AND IMPLEMENT A TRENCH SAFETY PROGRAM IN ACCORDANCE WITH OSHA STANDARDS GOVERNING THE PRESENCE AND ACTIVITIES OF INDIVIDUALS WORKING IN AND AROUND TRENCH EXCAVATION.

CPS ENERGY NOTE: CALL THE TEXAS STATE WIDE ONE CALL LOCATOR NUMBER 1-800-344-8377, 48 HOURS BEFORE BEGINNING ANY EXCAVATION.

ESTIMATED QUANTITIES			
ITEM	DESCRIPTION	UNIT	QTY
103.3	REMOVE CONCRETE SIDEWALKS & DRIVEWAYS (COSA SPEC)	SF	337
203.1	TACK COAT (COSA SPEC)	GAL	8
205.2	HOT MIX ASPHALTIC PAVEMENT, TYPE B (10" COMP DEPTH) (COSA SPEC)	SY	62
205.4	HOT MIX ASPHALTIC PAVEMENT, TYPE D (2" COMP DEPTH) (COSA SPEC)	SY	78
208.1	SALVAGING, HAULING, AND STOCKPILING RECLAIMABLE ASPHALTIC PAVEMENT (2" DEPTH) (COSA SPEC)	SY	78
299	FLOWABLE FILL (HIGH STRENGTH)	CY	10
502.1	CONCRETE SIDEWALKS (COSA SPEC)	SY	3
503.1	PORTLAND CEMENT CONCRETE DRIVEWAYS (COSA SPEC)	SY	35
530.1	BARRICADES, SIGNS, AND TRAFFIC HANDLING (COSA SPEC) - SITE NO. 13	EA	1
550	TRENCH EXCAVATION SAFETY PROTECTION	LF	188
818	8" PVC C-900 (SDR 18, 235 PSI) WATERLINE (RESTRAIN AS REQUIRED)	LF	52
836	PIPE FITTINGS (ALL SIZES & TYPES)	TN	0.3
840	6" WATER TIE-IN	EA	2
841	WATER HYDROSTATIC TESTING	EA	1
844	2" BLOW-OFF, TEMPORARY	EA	2
848	8" PVC SANITARY SEWER PIPE (SDR 26, ASTM D2241) (ALL DEPTHS)	LF	150
852.8.1	SANITARY SEWER MANHOLE (0' - 6' DEPTH) (WATERTIGHT)	EA	3
854.1	SANITARY SEWER LATERALS (SDR 26, ASTM D2241, 160 PSI)	LF	102
854.2	TWO-WAY SANITARY SEWER CLEAN-OUT	EA	4
854.3	ONE-WAY SANITARY SEWER CLEAN-OUT	EA	8
858	CONCRETE ENCASEMENT, CRADLES, SADDLES AND COLLARS	CY	11.8
865	BYPASS PUMPING (SMALL DIAMETER SANITARY SEWERS) - SITE NO. 13	EA	1
866	SANITARY SEWER MAIN PRE-TELEVISION INSPECTION (8"-15" DIA)	LF	196
866	SANITARY SEWER MAIN POST-TELEVISION INSPECTION (8"-15" DIA)	LF	150
910.1	MANHOLE REHABILITATION (STANDARD MANHOLES 4FT DIAMETER)	VF	10
3000	HANDLING ASBESTOS CEMENT PIPE	LF	39
SS 3300	SANITARY SEWER PRIVATE LATERAL (4"-6")	LF	93



- NOTES:**
- DIMENSIONS ARE IN FEET UNLESS OTHERWISE NOTED.
 - PROPERTY LINES SHOWN ARE APPROXIMATE AND RIGHT-OF WAY BOUNDARY LINE SHOWN IS APPARENT.
 - THE EXISTENCE AND LOCATION OF UTILITIES SHOWN ON THE PLAN ARE APPROXIMATE BASED ON THE AVAILABLE PLAN-OF-RECORD DRAWINGS AND ARE NOT GUARANTEED TO BE ACCURATE.
 - CONTRACTOR SHALL FIELD VERIFY ALL EXISTING AND PROPOSED DIMENSIONS PRIOR TO CONSTRUCTION (NSPI).
 - CONTRACTOR SHALL VERIFY LOCATIONS OF EXISTING LATERALS AND CLEANOUTS PRIOR TO CONSTRUCTION (NSPI).
 - CONTRACTOR SHALL EXPOSE AND VERIFY LOCATIONS, DEPTHS, DISTANCES, PIPE SIZES AND GRADES OF EXISTING UTILITIES PRIOR TO CONSTRUCTION (NSPI).
 - CONTRACTOR SHALL USE EXTREME CAUTION AND CARE WHEN UNCOVERING UTILITIES DESIGNATED BY CAUTION LOCATE CROSSING STAR ON PLANS. HAND DIGGING (NSPI) MAY BE NECESSARY.
 - LATERALS SHALL BE INSTALLED TO THE APPARENT ROW BOUNDARY LINE WITH CLEANOUT AND SAWS APPROVED THREADED CLEANOUT CAP (NSPI). TRAFFIC RATED CAST IRON FRAME AND GATE CAP (NSPI) REQUIRED FOR SEWER CLEANOUTS IN SIDEWALK OR DRIVEWAY AND PAVEMENT PER SAWS STANDARD DETAIL DD-854-02.
 - CONTRACTOR TO TAKE CAUTION WHILE EXCAVATING FOR SEWER MAIN AND LATERALS AT EXISTING GAS MAIN CROSSINGS AND EXPOSE AND PROTECT GAS MAINS AND GAS SERVICES WHERE CROSSING SEWER MAIN OR LATERALS, HAND DIGGING MAY BE NECESSARY (NSPI).
 - EXCAVATION IN THE VICINITY OF TREES SHALL PROCEED WITH CAUTION, HAND DIGGING (NSPI) MAY BE NECESSARY. TREES FOUND ON PRIVATE PROPERTY WITH BRANCHES THAT OVERHANG ONTO PUBLIC ROW, WHERE IDENTIFIED, MAY REQUIRE TRIMMING, PRUNING, AND ROOT PROTECTION FOR CONSTRUCTION AND SHALL FOLLOW THE APPROVED TREE PERMIT (NSPI).
 - CONTRACTOR TO TAKE CAUTION WHEN CONSTRUCTING NEAR EXISTING POWER POLES. WHENEVER POWER/TEL. POLES ARE (<5') FROM OUTSIDE OF POLE TO TRENCH OF UTILITY CONSTRUCTION THE CONTRACTOR SHALL COORDINATE WITH CPS TO PROVIDE PROPER SHORING, BRACING, AND/OR OTHER SUITABLE SUPPORT FOR THE POLES DURING CONSTRUCTION.
 - CONTRACTOR SHALL FIELD VERIFY AND LOCATE PRIVATE SEWER LATERAL LOCATIONS FOR CONNECTION. PRIVATE LATERAL REROUTES SHOWN ON THIS SHEET ARE CONCEPTUAL ONLY AND ACTUAL LATERAL REROUTE SHALL BE DETERMINED BY A LICENSED MASTER PLUMBER PER SS 3300.
 - SURVEY PREPARED BY MAESTAS & ASSOCIATES, LLC DATED SEPTEMBER, 2022.



100% SUBMITTAL

SCALE: 1"=20' H, 1"=5' V (FULL SCALE)
1"=40' H, 1"=10' V (HALF SCALE)

LEGEND

- PROP. SAN SEWER
- PROP. LATERAL WITH TWO WAY CLEAN OUT
- EXIST. WATER MAIN
- EXIST. GAS MAIN
- EXIST. SAN. SEWER
- EXIST. STORM SEWER
- OVER HEAD UTILITY
- EXIST. RIGHT OF WAY
- PROPERTY LINES
- EXIST. EOP WITH CURB
- EXIST. EOP WITHOUT CURB
- EXIST. TREES
- CONC. ENCASEMENT DRIVEWAY & SIDEWALK REPAIR
- FLOWABLE FILL
- MILL AND OVERLAY

REVISIONS

NO.	REVISION	TRM	EMA	DATE
1	ADDENDUM NO. 5			12/28/23

DEVELOPER: Lockwood, Andrews & Newnam, Inc. A LEO A DALY COMPANY
TBPE REGISTRATION NO.: F-2614

2021 CMOM PACKAGE 6 - OPEN CUT AND PIPE BURST

SITE NO. 13 - COMPKEY 987641 ORLEANS ST AND ARLENE ST

MAP NO. 152572
SECT. NO. DR. TRM CK. EMA
JOB NO. 22-4510

SHEET 30 OF 144

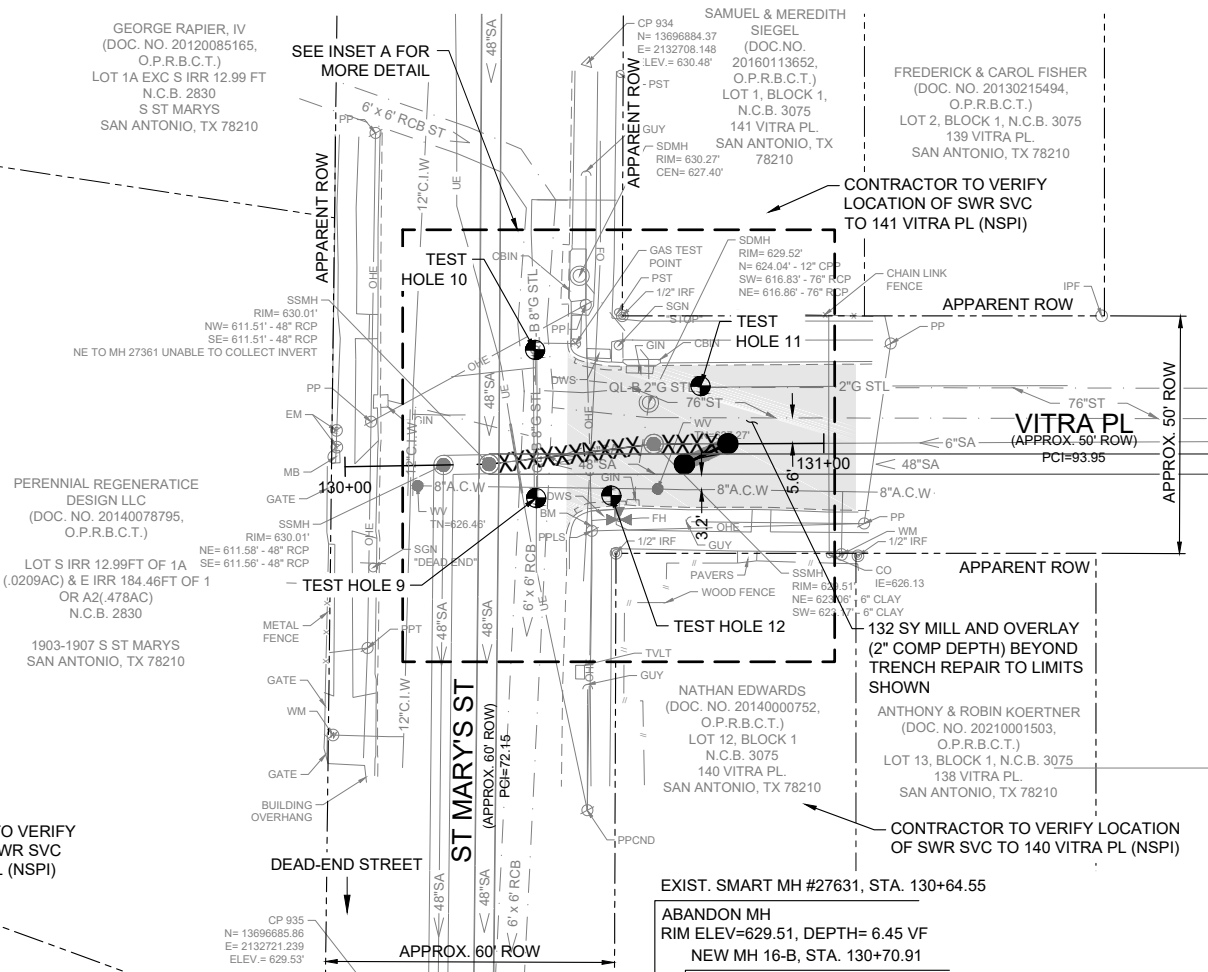
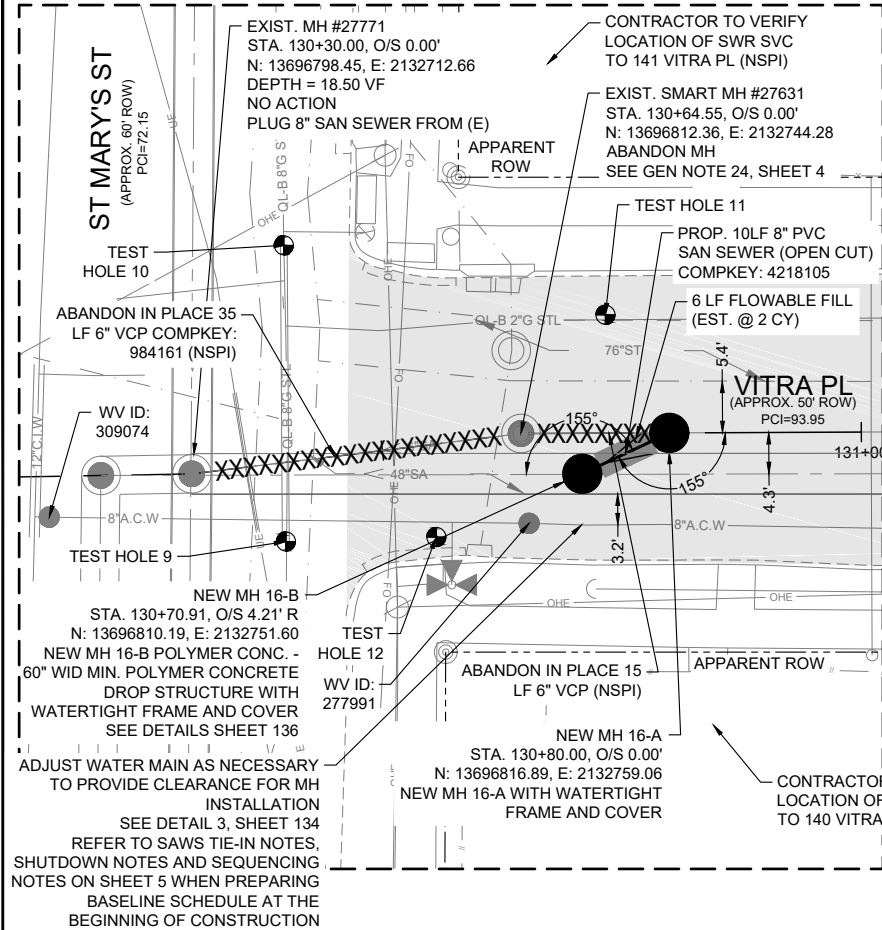
FILE:02_CXXX-CMOM_OCPB PLPB 9-15.dwg PLOTTED: 12/20/2023 8:59 AM BY: GONZALEZ, MANUEL

TRENCH EXCAVATION SAFETY PROTECTION: CONTRACTOR AND/OR CONTRACTOR'S INDEPENDENTLY RETAINED EMPLOYEE OR STRUCTURAL DESIGN/GEOTECHNICAL/SAFETY EQUIPMENT CONSULTANT, IF ANY, SHALL REVIEW THESE PLANS AND ANY AVAILABLE GEOTECHNICAL INFORMATION AND THE ANTICIPATED INSTALLATION SITES(S) IN ORDER TO DEVELOP THE CONTRACTOR'S PLANS TO IMPLEMENT THE PROJECT DESCRIBED IN THE CONTRACT DOCUMENTS. THE CONTRACTOR'S PLANS SHALL PROVIDE FOR ADEQUATE TRENCH SAFETY SYSTEMS THAT COMPLY WITH, AS A MINIMUM, OSHA STANDARDS FOR TRENCH EXCAVATIONS. CONTRACTOR AND/OR CONTRACTOR'S INDEPENDENTLY RETAINED EMPLOYEE OR SAFETY CONSULTANT SHALL DEVELOP AND IMPLEMENT A TRENCH SAFETY PROGRAM IN ACCORDANCE WITH OSHA STANDARDS GOVERNING THE PRESENCE AND ACTIVITIES OF INDIVIDUALS WORKING IN AND AROUND TRENCH EXCAVATION.

CPS ENERGY NOTE: CALL THE TEXAS STATE WIDE ONE CALL LOCATOR NUMBER 1-800-344-8377, 48 HOURS BEFORE BEGINNING ANY EXCAVATION.

INSET A

SCALE: 1"=10' (FULL SCALE)



ESTIMATED QUANTITIES			
ITEM	DESCRIPTION	UNIT	QTY
202.1	PRIME COAT (COSA SPEC)	GAL	40
203.1	TACK COAT (COSA SPEC)	GAL	20
205.2	HOT MIX ASPHALTIC PAVEMENT, TYPE B (10" COMP DEPTH) (COSA SPEC)	SY	4
205.4	HOT MIX ASPHALTIC PAVEMENT, TYPE D (2" COMP DEPTH) (COSA SPEC)	SY	200
208.1	SALVAGING, HAULING, AND STOCKPILING RECLAIMABLE ASPHALTIC PAVEMENT (2" DEPTH) (COSA SPEC)	SY	200
299	FLOWABLE FILL (HIGH STRENGTH)	CY	2
530.1	BARRICADES, SIGNS, AND TRAFFIC HANDLING (COSA SPEC) - SITE NO. 16	EA	1
550	TRENCH EXCAVATION SAFETY PROTECTION	LF	10
848	8" PVC SANITARY SEWER PIPE (SDR 26, ASTM D2241) (ALL DEPTHS)	LF	10
850	POLYMER CONCRETE DROP SANITARY SEWER STRUCTURE (60" WIDE MIN)	EA	1
852.8.1	SANITARY SEWER MANHOLE (0' - 6' DEPTH) (WATERTIGHT)	EA	1
852.8.2	EXTRA DEPTH MANHOLES (> 6' DEEP)	VF	1
854.1	SANITARY SEWER LATERALS (SDR 26, ASTM 2241, 160 PSI)	LF	25
854.2	TWO-WAY SANITARY SEWER CLEAN-OUT	EA	2
858	CONCRETE ENCASUREMENT, CRADLES, SADDLES AND COLLARS	CY	0.5
862.7.1	ABANDONMENT OF SANITARY SEWER MANHOLE	EA	1
865	BYPASS PUMPING (SMALL DIAMETER SANITARY SEWERS) - SITE NO. 16	EA	1
866	SANITARY SEWER MAIN PRE-TELEVISION INSPECTION (8"-15" DIA)	LF	50
866	SANITARY SEWER MAIN POST-TELEVISION INSPECTION (8"-15" DIA)	LF	10

NOTES:

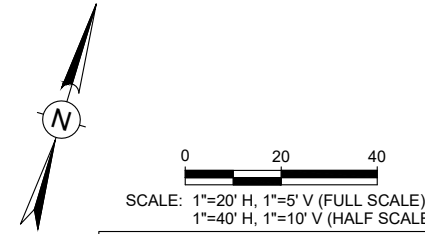
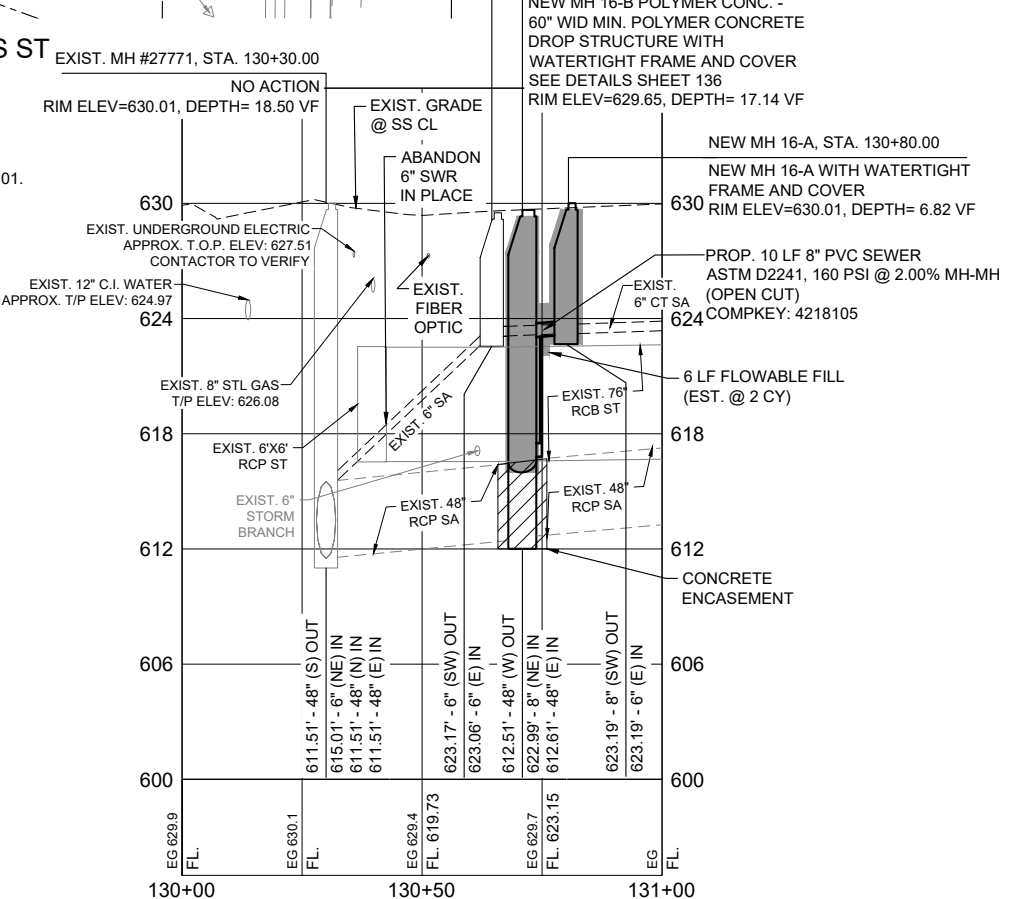
- DIMENSIONS ARE IN FEET UNLESS OTHERWISE NOTED.
- PROPERTY LINES SHOWN ARE APPROXIMATE AND RIGHT-OF WAY BOUNDARY LINE SHOWN IS APPARENT.
- THE EXISTENCE AND LOCATION OF UTILITIES SHOWN ON THE PLAN ARE APPROXIMATE BASED ON THE AVAILABLE PLAN-OF-RECORD DRAWINGS AND ARE NOT GUARANTEED TO BE ACCURATE.
- CONTRACTOR SHALL FIELD VERIFY ALL EXISTING AND PROPOSED DIMENSIONS PRIOR TO CONSTRUCTION (NSPI).
- CONTRACTOR SHALL VERIFY LOCATIONS OF EXISTING LATERALS AND CLEANOUTS PRIOR TO CONSTRUCTION (NSPI).
- CONTRACTOR SHALL EXPOSE AND VERIFY LOCATIONS, DEPTHS, DISTANCES, PIPE SIZES AND GRADES OF EXISTING UTILITIES PRIOR TO CONSTRUCTION (NSPI).
- CONTRACTOR SHALL USE EXTREME CAUTION AND CARE WHEN UNCOVERING UTILITIES DESIGNATED BY CAUTION LOCATE CROSSING STAR ON PLANS, HAND DIGGING (NSPI) MAY BE NECESSARY.
- LATERALS SHALL BE INSTALLED TO THE APPARENT ROW BOUNDARY LINE WITH CLEANOUT AND SAWS APPROVED THREADED CLEANOUT CAP (NSPI). TRAFFIC RATED CAST IRON FRAME AND GATE CAP (NSPI) REQUIRED FOR SEWER CLEANOUTS IN SIDEWALK OR DRIVEWAY AND PAVEMENT PER SAWS STANDARD DETAIL DD-854-02.
- CONTRACTOR TO TAKE CAUTION WHILE EXCAVATING FOR SEWER MAIN AND LATERALS AT EXISTING GAS MAIN CROSSINGS AND EXPOSE AND PROTECT GAS MAINS AND GAS SERVICES WHERE CROSSING SEWER MAIN OR LATERALS. HAND DIGGING MAY BE NECESSARY (NSPI).
- EXCAVATION IN THE VICINITY OF TREES SHALL PROCEED WITH CAUTION, HAND DIGGING (NSPI) MAY BE NECESSARY. TREES FOUND ON PRIVATE PROPERTY WITH BRANCHES THAT OVERHANG ONTO PUBLIC ROW, WHERE IDENTIFIED, MAY REQUIRE TRIMMING, PRUNING, AND ROOT PROTECTION FOR CONSTRUCTION AND SHALL FOLLOW THE APPROVED TREE PERMIT (NSPI).
- CONTRACTOR TO TAKE CAUTION WHEN CONSTRUCTING NEAR EXISTING POWER POLES. WHENEVER POWER/TEL. POLES ARE (<5') FROM OUTSIDE OF POLE TO TRENCH OF UTILITY CONSTRUCTION THE CONTRACTOR SHALL COORDINATE WITH CPS TO PROVIDE PROPER SHORING, BRACING, AND/OR OTHER SUITABLE SUPPORT FOR THE POLES DURING CONSTRUCTION.
- SURVEY PREPARED BY MAESTAS & ASSOCIATES, LLC DATED SEPTEMBER, 2022.

- TEST HOLE 9**
8" STL GAS
N: 13696794.52
E: 2132724.08
GROUND ELEV = 629.53
DEPTH = 4.07
OWNER: CPS ENERGY
- TEST HOLE 10**
8" STL GAS
N: 13696824.01
E: 2132714.97
GROUND ELEV = 629.88
DEPTH = 3.80
OWNER: CPS ENERGY
- TEST HOLE 11**
2" STL GAS
N: 13696826.75
E: 2132749.14
GROUND ELEV = 629.77
DEPTH = 3.04
OWNER: CPS ENERGY
- TEST HOLE 12**
ROUGH POURED CONC. ABOVE 8" AC WATER MAIN
N: 13696799.50
E: 2132738.95
GROUND ELEV = 629.11
DEPTH = 2.95
OWNER: SAWS

SITE No. 16 - VITRA PL & ST. MARY'S ST
COMPKEY 984161

FOR CONCEPTUAL BYPASS PLAN, SEE SHEET 67.
FOR CONCEPTUAL TRAFFIC CONTROL PLAN, SEE SHEET 101.

SPECIAL NOTE:
1. N/A



LEGEND

- PROP. SAN SEWER
- PROP. LATERAL WITH TWO WAY CLEAN OUT
- EXIST. WATER MAIN
- EXIST. GAS MAIN
- EXIST. SAN. SEWER
- EXIST. STORM SEWER
- OVER HEAD UTILITY
- EXIST. RIGHT OF WAY
- PROPERTY LINES
- EXIST. EOP WITH CURB
- EXIST. EOP WITHOUT CURB
- EXIST. TREES
- CONC. ENCASUREMENT DRIVEWAY & SIDEWALK REPAIR
- FLOWABLE FILL
- MILL AND OVERLAY

100% SUBMITTAL



Lockwood, Andrews & Newnam, Inc.
A LEAD A DAILY COMPANY
TBPE REGISTRATION NO.: F-2614

12/28/2023

NO.	REVISION	TRM	EMA	DATE
1	ADDENDUM NO. 5			12/28/23

REVISIONS

2021 CMOM PACKAGE 6 - OPEN CUT AND PIPE BURST

SITE NO. 16 - COMPKEY 984161
VITRA PL & ST MARY'S ST

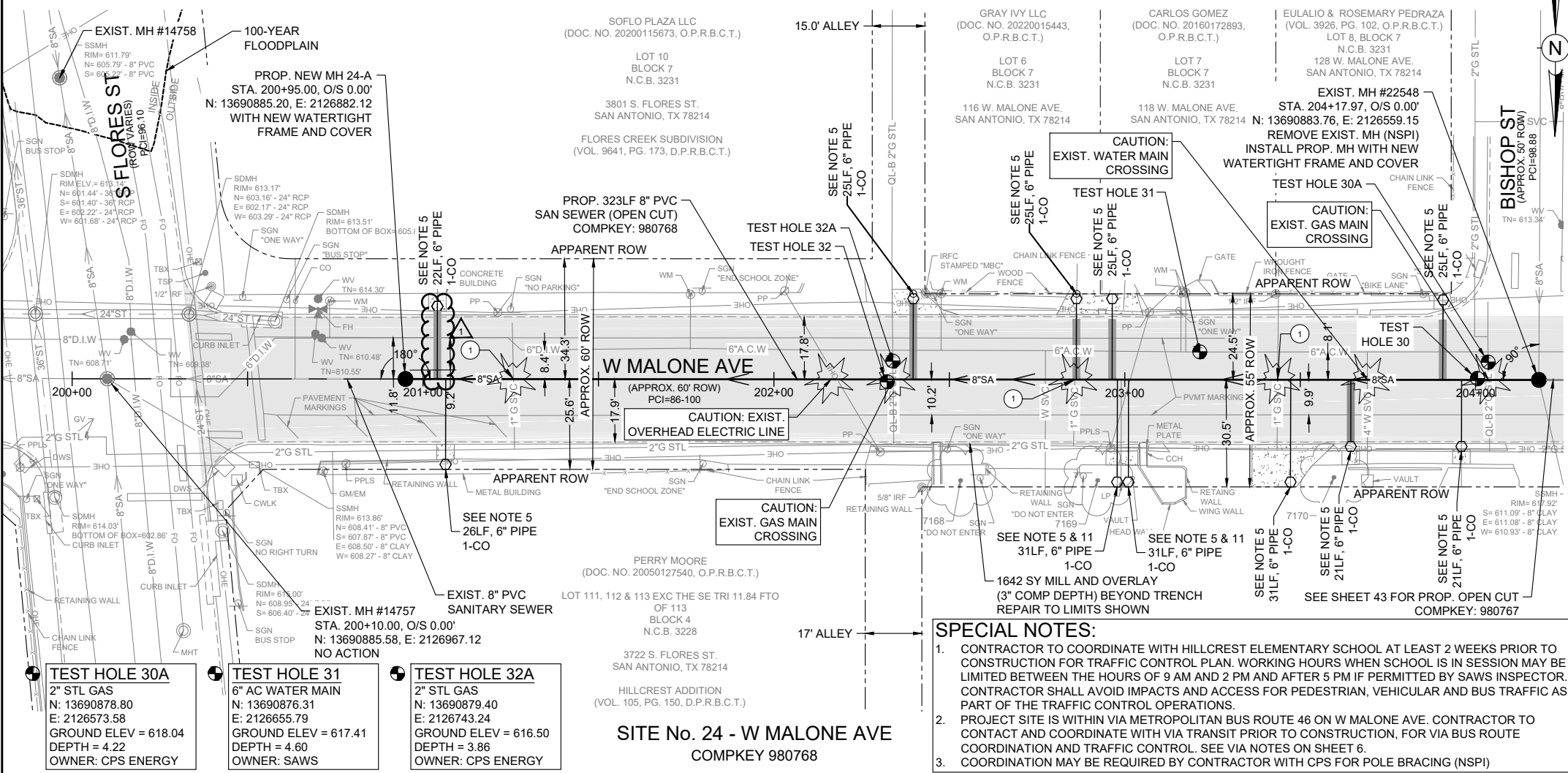
DEVELOPER: _____
CONT. _____ BUDGET PROJ. _____

SUBMITTED _____
APPROVED _____

MAP NO. 162570 SHEET 33
SECT. NO. _____
DR. TRM CK. EMA JOB NO. 22-4510 OF 144

TRENCH EXCAVATION SAFETY PROTECTION: CONTRACTOR AND/OR CONTRACTOR'S INDEPENDENTLY RETAINED EMPLOYEE OR STRUCTURAL DESIGN/GEOTECHNICAL/SAFETY EQUIPMENT CONSULTANT, IF ANY, SHALL REVIEW THESE PLANS AND ANY AVAILABLE GEOTECHNICAL INFORMATION AND THE ANTICIPATED INSTALLATION SITES(S) IN ORDER TO DEVELOP THE CONTRACTOR'S PLANS TO IMPLEMENT THE PROJECT DESCRIBED IN THE CONTRACT DOCUMENTS. THE CONTRACTOR'S PLANS SHALL PROVIDE FOR ADEQUATE TRENCH SAFETY SYSTEMS THAT COMPLY WITH, AS A MINIMUM, OSHA STANDARDS FOR TRENCH EXCAVATIONS. CONTRACTOR AND/OR CONTRACTOR'S INDEPENDENTLY RETAINED EMPLOYEE OR SAFETY CONSULTANT SHALL DEVELOP AND IMPLEMENT A TRENCH SAFETY PROGRAM IN ACCORDANCE WITH OSHA STANDARDS GOVERNING THE PRESENCE AND ACTIVITIES OF INDIVIDUALS WORKING IN AND AROUND TRENCH EXCAVATION.

CPS ENERGY NOTE: CALL THE TEXAS STATE WIDE ONE CALL LOCATOR NUMBER 1-800-344-8377, 48 HOURS BEFORE BEGINNING ANY EXCAVATION.



ESTIMATED QUANTITIES			
ITEM	DESCRIPTION	UNIT	QTY
103.1	REMOVE CONCRETE CURB (COSA SPEC)	LF	60
103.3	REMOVE CONCRETE SIDEWALKS & DRIVEWAYS (COSA SPEC)	SF	581
202.1	PRIME COAT (COSA SPEC)	GAL	329
203.1	TACK COAT (COSA SPEC)	GAL	165
205.2	HOT MIX ASPHALTIC PAVEMENT, TYPE B (10" COMP DEPTH) (COSA SPEC)	SY	132
205.3	HOT MIX ASPHALTIC PAVEMENT, TYPE C (3" COMP DEPTH) (COSA SPEC)	SY	1642
208.1	SALVAGING, HAULING, AND STOCKPILING RECLAIMABLE ASPHALTIC PAVEMENT (3" DEPTH) (COSA SPEC)	SY	1642
299	FLOWABLE FILL (HIGH STRENGTH)	CY	24
500.1	CONCRETE CURB (COSA SPEC)	LF	60
502.1	CONCRETE SIDEWALKS (COSA SPEC)	SY	17
503.1	PORTLAND CEMENT CONCRETE DRIVEWAYS (COSA SPEC)	SY	49
506	CONCRETE RETAINING WALL - COMBINATION TYPE (COSA SPEC)	CY	2.5
530.1	BARRICADES, SIGNS, AND TRAFFIC HANDLING (COSA SPEC) - SITE NO. 24	EA	1
535.2	4 INCH WIDE WHITE LINE (COSA SPEC)	LF	90
535.4	8 INCH WIDE WHITE LINE (COSA SPEC)	LF	547
535.7	24 INCH WIDE WHITE LINE (COSA SPEC)	LF	95
535.13	STRAIGHT WHITE ARROW (COSA SPEC)	EA	1
535.17	BICYCLE RIDER SYMBOL (COSA SPEC)	EA	1
537.7	PAVEMENT MARKER (TYPE I-R) (COSA SPEC)	EA	8
550	TRENCH EXCAVATION SAFETY PROTECTION	LF	323
848	8" PVC SANITARY SEWER PIPE (SDR 26, ASTM D2241) (ALL DEPTHS)	LF	323
852.8.1	SANITARY SEWER MANHOLE (0' - 6' DEPTH) (WATERTIGHT)	EA	2
852.8.2	EXTRA DEPTH MANHOLES (> 6' DEEP)	VF	1
854.1	SANITARY SEWER LATERALS (SDR 26, ASTM D2241, 160 PSI)	LF	283
854.2	TWO-WAY SANITARY SEWER CLEAN-OUT	EA	10
858	CONCRETE ENCASUREMENT, CRADLES, SADDLES AND COLLARS	CY	0.7
865	BYPASS PUMPING (SMALL DIAMETER SANITARY SEWERS) - SITE NO. 24	EA	1
866	SANITARY SEWER MAIN PRE-TELEVISION INSPECTION (8"-15" DIA)	LF	323
866	SANITARY SEWER MAIN POST-TELEVISION INSPECTION (8"-15" DIA)	LF	323

- NOTES:**
- DIMENSIONS ARE IN FEET UNLESS OTHERWISE NOTED.
 - PROPERTY LINES SHOWN ARE APPROXIMATE AND RIGHT-OF WAY BOUNDARY LINE SHOWN IS APPARENT.
 - THE EXISTENCE AND LOCATION OF UTILITIES SHOWN ON THE PLAN ARE APPROXIMATE BASED ON THE AVAILABLE PLAN-OF-RECORD DRAWINGS AND ARE NOT GUARANTEED TO BE ACCURATE.
 - CONTRACTOR SHALL FIELD VERIFY ALL EXISTING AND PROPOSED DIMENSIONS PRIOR TO CONSTRUCTION (NSPI).
 - CONTRACTOR SHALL VERIFY LOCATIONS OF EXISTING LATERALS AND CLEANOUTS PRIOR TO CONSTRUCTION (NSPI).
 - CONTRACTOR SHALL EXPOSE AND VERIFY LOCATIONS, DEPTHS, DISTANCES, PIPE SIZES AND GRADES OF EXISTING UTILITIES PRIOR TO CONSTRUCTION (NSPI).
 - CONTRACTOR SHALL USE EXTREME CAUTION AND CARE WHEN UNCOVERING UTILITIES DESIGNATED BY CAUTION LOCATE CROSSING STAR ON PLANS, HAND DIGGING (NSPI) MAY BE NECESSARY.
 - LATERALS SHALL BE INSTALLED TO THE APPARENT ROW BOUNDARY LINE WITH CLEANOUT AND SAWS APPROVED THREADED CLEANOUT CAP (NSPI). TRAFFIC RATED CAST IRON FRAME AND GATE CAP (NSPI) REQUIRED FOR SEWER CLEANOUTS IN SIDEWALK OR DRIVEWAY AND PAVEMENT PER SAWS STANDARD DETAIL DD-854-02.
 - CONTRACTOR TO TAKE CAUTION WHILE EXCAVATING FOR SEWER MAIN AND LATERALS AT EXISTING GAS MAIN CROSSINGS AND EXPOSE AND PROTECT GAS MAINS AND GAS SERVICES WHERE CROSSING SEWER MAIN OR LATERALS, HAND DIGGING MAY BE NECESSARY (NSPI).
 - EXCAVATION IN THE VICINITY OF TREES SHALL PROCEED WITH CAUTION, HAND DIGGING (NSPI) MAY BE NECESSARY. TREES FOUND ON PRIVATE PROPERTY WITH BRANCHES THAT OVERHANG ONTO PUBLIC ROW, WHERE IDENTIFIED, MAY REQUIRE TRIMMING, PRUNING, AND ROOT PROTECTION FOR CONSTRUCTION AND SHALL FOLLOW THE APPROVED TREE PERMIT (NSPI).
 - CONTRACTOR TO TAKE CAUTION WHEN CONSTRUCTING NEAR EXISTING POWER POLES. WHENEVER POWER/TEL. POLES ARE (<5') FROM OUTSIDE OF POLE TO TRENCH OF UTILITY CONSTRUCTION THE CONTRACTOR SHALL COORDINATE WITH CPS TO PROVIDE PROPER SHORING, BRACING, AND/OR OTHER SUITABLE SUPPORT FOR THE POLES DURING CONSTRUCTION.
 - SURVEY PREPARED BY MAESTAS & ASSOCIATES, LLC DATED SEPTEMBER, 2022.

- SPECIAL NOTES:**
- CONTRACTOR TO COORDINATE WITH HILLCREST ELEMENTARY SCHOOL AT LEAST 2 WEEKS PRIOR TO CONSTRUCTION FOR TRAFFIC CONTROL PLAN. WORKING HOURS WHEN SCHOOL IS IN SESSION MAY BE LIMITED BETWEEN THE HOURS OF 9 AM AND 2 PM AND AFTER 5 PM IF PERMITTED BY SAWS INSPECTOR. CONTRACTOR SHALL AVOID IMPACTS AND ACCESS FOR PEDESTRIAN, VEHICULAR AND BUS TRAFFIC AS PART OF THE TRAFFIC CONTROL OPERATIONS.
 - PROJECT SITE IS WITHIN VIA METROPOLITAN BUS ROUTE 46 ON W MALONE AVE. CONTRACTOR TO CONTACT AND COORDINATE WITH VIA TRANSIT PRIOR TO CONSTRUCTION, FOR VIA BUS ROUTE COORDINATION AND TRAFFIC CONTROL. SEE VIA NOTES ON SHEET 6.
 - COORDINATION MAY BE REQUIRED BY CONTRACTOR WITH CPS FOR POLE BRACING (NSPI)

100% SUBMITTAL

SCALE: 1"=20' H, 1"=5' V (FULL SCALE)
1"=40' H, 1"=10' V (HALF SCALE)

LEGEND

- PROP. SAN SEWER
- PROP. LATERAL WITH TWO WAY CLEAN OUT
- EXIST. WATER MAIN
- EXIST. GAS MAIN
- EXIST. SAN. SEWER
- EXIST. STORM SEWER
- OVER HEAD UTILITY
- EXIST. RIGHT OF WAY
- PROPERTY LINES
- EXIST. EOP WITH CURB
- EXIST. EOP WITHOUT CURB
- EXIST. TREES
- CONC. ENCASUREMENT
- DRIVEWAY & SIDEWALK REPAIR
- FLOWABLE FILL
- MILL AND OVERLAY

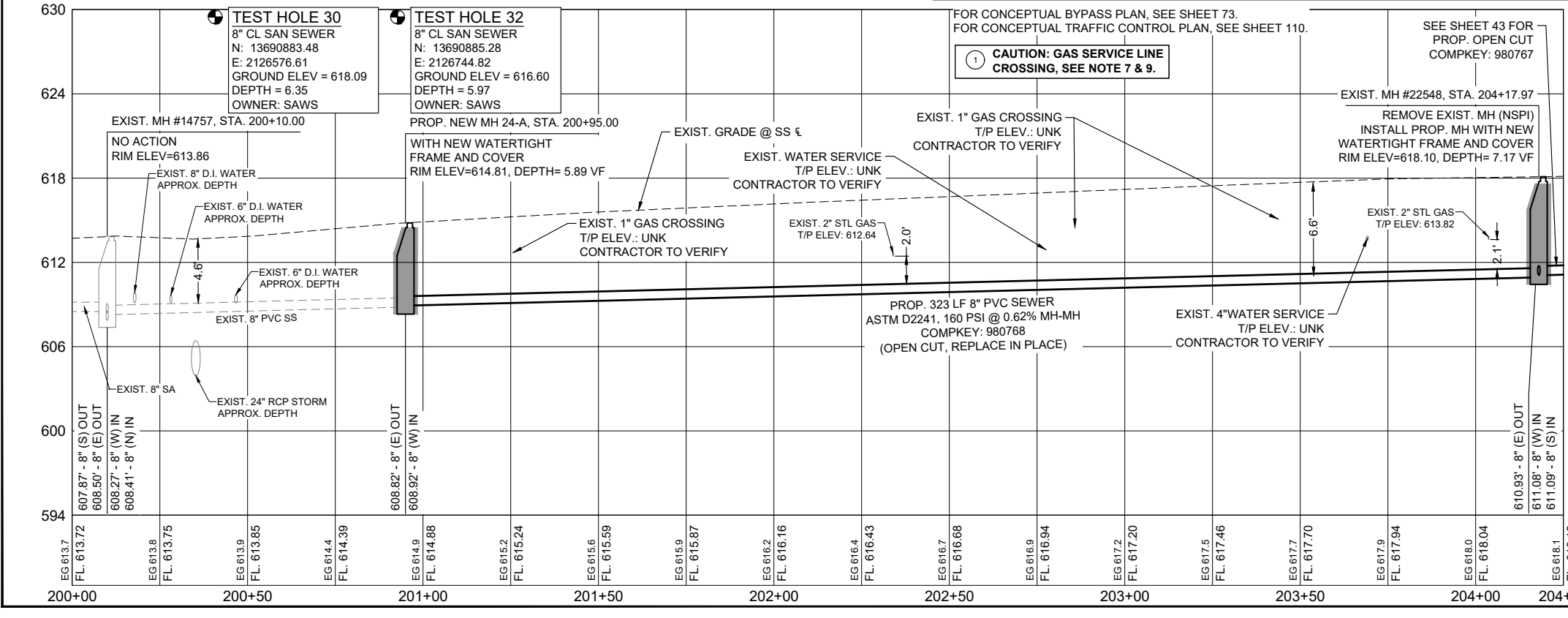
REVISIONS

NO.	REVISION	TRM	EMA	DATE
1	ADDENDUM NO. 5			12/28/23

2021 CMOM PACKAGE 6 - OPEN CUT AND PIPE BURST
SITE NO. 24 - COMPKEY 980768
W MALONE AVE

DEVELOPER: [Signature]
CONT. [Signature] BUDGET PROJ.
SUBMITTED [Signature]
APPROVED [Signature]

MAP NO. 156564, 158564
SECT. NO. 42
DR. TRM CK. EMA JOB NO. 22-4510 SHEET OF 144



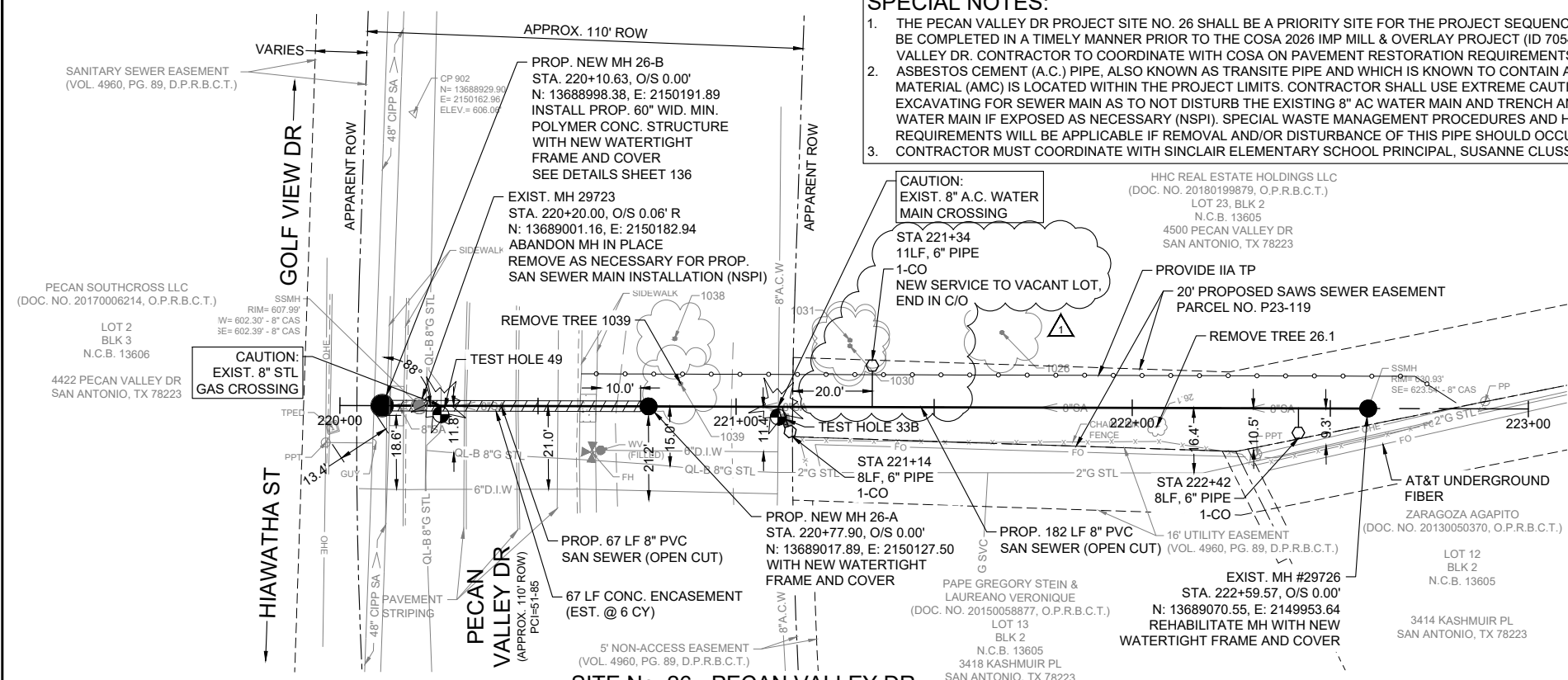
FILE:04_CXXX-CMOM_OCPB PLPR 23-27.dwg PLOTTED: 12/27/2023 12:15 PM BY: GONZALEZ, MANUEL

TRENCH EXCAVATION SAFETY PROTECTION: CONTRACTOR AND/OR CONTRACTOR'S INDEPENDENTLY RETAINED EMPLOYEE OR STRUCTURAL DESIGN/GEOTECHNICAL/SAFETY EQUIPMENT CONSULTANT, IF ANY, SHALL REVIEW THESE PLANS AND ANY AVAILABLE GEOTECHNICAL INFORMATION AND THE ANTICIPATED INSTALLATION SITES(S) IN ORDER TO DEVELOP THE CONTRACTOR'S PLANS TO IMPLEMENT THE PROJECT DESCRIBED IN THE CONTRACT DOCUMENTS. THE CONTRACTOR'S PLANS SHALL PROVIDE FOR ADEQUATE TRENCH SAFETY SYSTEMS THAT COMPLY WITH, AS A MINIMUM, OSHA STANDARDS FOR TRENCH EXCAVATIONS. CONTRACTOR AND/OR CONTRACTOR'S INDEPENDENTLY RETAINED EMPLOYEE OR SAFETY CONSULTANT SHALL DEVELOP AND IMPLEMENT A TRENCH SAFETY PROGRAM IN ACCORDANCE WITH OSHA STANDARDS GOVERNING THE PRESENCE AND ACTIVITIES OF INDIVIDUALS WORKING IN AND AROUND TRENCH EXCAVATION.
CPS ENERGY NOTE: CALL THE TEXAS STATE WIDE ONE CALL LOCATOR NUMBER 1-800-344-8377, 48 HOURS BEFORE BEGINNING ANY EXCAVATION.

ESTIMATED QUANTITIES			
ITEM	DESCRIPTION	UNIT	QTY
103.1	REMOVE CONCRETE CURB (COSA SPEC)	LF	40
103.3	REMOVE CONCRETE SIDEWALKS & DRIVEWAYS (COSA SPEC)	SF	70
202.1	PRIME COAT (COSA SPEC)	GAL	5
203.1	TACK COAT (COSA SPEC)	GAL	3
205.2	HOT MIX ASPHALTIC PAVEMENT, TYPE B (10" COMP DEPTH) (COSA SPEC)	SY	21
205.4	HOT MIX ASPHALTIC PAVEMENT, TYPE D (2" COMP DEPTH) (COSA SPEC)	SY	26
299	FLOWABLE FILL (HIGH STRENGTH)	CY	5
299.2	FLOWABLE FILL (LOW STRENGTH)	CY	3
500.1	CONCRETE CURB (COSA SPEC)	LF	40
502.1	CONCRETE SIDEWALKS (COSA SPEC)	SY	8
530.1	BARRICADES, SIGNS, AND TRAFFIC HANDLING (COSA SPEC) - SITE NO. 26	EA	1
535.1	4 INCH WIDE YELLOW LINE (COSA SPEC)	LF	20
535.4	8 INCH WIDE WHITE LINE (COSA SPEC)	LF	10
537.5	PAVEMENT MARKER (TYPE I-A) (COSA SPEC)	EA	2
537.8	PAVEMENT MARKER (TYPE II-A-A) (COSA SPEC)	EA	1
550	TRENCH EXCAVATION SAFETY PROTECTION	LF	249
848	8" PVC SANITARY SEWER PIPE (SDR 26, ASTM D2241) (ALL DEPTHS)	LF	249
850	POLYMER CONCRETE SANITARY SEWER STRUCTURE (60" WIDE MIN)	EA	1
852.8.1	SANITARY SEWER MANHOLE (0' - 6' DEPTH) (WATERTIGHT)	EA	1
852.8.2	EXTRA DEPTH MANHOLES (> 6' DEEP)	VF	4
854.1	SANITARY SEWER LATERALS (SDR 26, ASTM 2241, 160 PSI)	LF	16
854.2	TWO-WAY SANITARY SEWER CLEAN-OUT	EA	2
858	CONCRETE ENCASUREMENT, CRADLES, SADDLES AND COLLARS	CY	5.9
862.7.1	ABANDONMENT OF SANITARY SEWER MANHOLE	EA	1
865	BYPASS PUMPING (SMALL DIAMETER SANITARY SEWERS) - SITE NO. 26	EA	1
866	SANITARY SEWER MAIN PRE-TELEVISION INSPECTION (8"-15" DIA)	LF	240
866	SANITARY SEWER MAIN POST-TELEVISION INSPECTION (8"-15" DIA)	LF	249
910.1	MANHOLE REHABILITATION (STANDARD MANHOLES 4FT DIAMETER)	VF	8

SPECIAL NOTES:

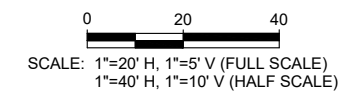
- THE PECAN VALLEY DR PROJECT SITE NO. 26 SHALL BE A PRIORITY SITE FOR THE PROJECT SEQUENCE OF WORK AND SHALL BE COMPLETED IN A TIMELY MANNER PRIOR TO THE COSA 2026 IMP MILL & OVERLAY PROJECT (ID 7054) BEGINS ON PECAN VALLEY DR. CONTRACTOR TO COORDINATE WITH COSA ON PAVEMENT RESTORATION REQUIREMENTS.
- ASBESTOS CEMENT (A.C.) PIPE, ALSO KNOWN AS TRANSITE PIPE AND WHICH IS KNOWN TO CONTAIN ASBESTOS CONTAINING MATERIAL (AMC) IS LOCATED WITHIN THE PROJECT LIMITS. CONTRACTOR SHALL USE EXTREME CAUTION AND CARE WHILE EXCAVATING FOR SEWER MAIN AS TO NOT DISTURB THE EXISTING 8" AC WATER MAIN AND TRENCH AND PROTECT AC WATER MAIN IF EXPOSED AS NECESSARY (NSPI). SPECIAL WASTE MANAGEMENT PROCEDURES AND HEALTH AND SAFETY REQUIREMENTS WILL BE APPLICABLE IF REMOVAL AND/OR DISTURBANCE OF THIS PIPE SHOULD OCCUR (NSPI).
- CONTRACTOR MUST COORDINATE WITH SINCLAIR ELEMENTARY SCHOOL PRINCIPAL, SUSANNE CLUSS AT (210) 648-4620.



NOTES:

- DIMENSIONS ARE IN FEET UNLESS OTHERWISE NOTED.
- PROPERTY LINES SHOWN ARE APPROXIMATE AND RIGHT-OF-WAY BOUNDARY LINE SHOWN IS APPARENT.
- THE EXISTENCE AND LOCATION OF UTILITIES SHOWN ON THE PLAN ARE APPROXIMATE BASED ON THE AVAILABLE PLAN-OF-RECORD DRAWINGS AND ARE NOT GUARANTEED TO BE ACCURATE.
- CONTRACTOR SHALL FIELD VERIFY ALL EXISTING AND PROPOSED DIMENSIONS PRIOR TO CONSTRUCTION (NSPI).
- CONTRACTOR SHALL VERIFY LOCATIONS OF EXISTING LATERALS AND CLEANOUTS PRIOR TO CONSTRUCTION (NSPI).
- CONTRACTOR SHALL EXPOSE AND VERIFY LOCATIONS, DEPTHS, DISTANCES, PIPE SIZES AND GRADES OF EXISTING UTILITIES PRIOR TO CONSTRUCTION (NSPI).
- CONTRACTOR SHALL USE EXTREME CAUTION AND CARE WHEN UNCOVERING UTILITIES DESIGNATED BY CAUTION LOCATE CROSSING STAR ON PLANS. HAND DIGGING (NSPI) MAY BE NECESSARY.
- LATERALS SHALL BE INSTALLED TO THE APPARENT ROW BOUNDARY LINE WITH CLEANOUT AND SAWS APPROVED THREADED CLEANOUT CAP (NSPI). TRAFFIC RATED CAST IRON FRAME AND GATE CAP (NSPI) REQUIRED FOR SEWER CLEANOUTS IN SIDEWALK OR DRIVEWAY AND PAVEMENT PER SAWS STANDARD DETAIL DD-854-02.
- CONTRACTOR TO TAKE CAUTION WHILE EXCAVATING FOR SEWER MAIN AND LATERALS AT EXISTING GAS MAIN CROSSINGS AND EXPOSE AND PROTECT GAS MAINS AND GAS SERVICES WHERE CROSSING SEWER MAIN OR LATERALS, HAND DIGGING MAY BE NECESSARY (NSPI).
- EXCAVATION IN THE VICINITY OF TREES SHALL PROCEED WITH CAUTION, HAND DIGGING (NSPI) MAY BE NECESSARY. TREES FOUND ON PRIVATE PROPERTY WITH BRANCHES THAT OVERHANG ONTO PUBLIC ROW, WHERE IDENTIFIED, MAY REQUIRE TRIMMING, PRUNING, AND ROOT PROTECTION FOR CONSTRUCTION AND SHALL FOLLOW THE APPROVED TREE PERMIT (NSPI).
- CONTRACTOR TO TAKE CAUTION WHEN CONSTRUCTING NEAR EXISTING POWER POLES. WHENEVER POWER/TEL. POLES ARE (<5') FROM OUTSIDE OF POLE TO TRENCH OF UTILITY CONSTRUCTION THE CONTRACTOR SHALL COORDINATE WITH CPS TO PROVIDE PROPER SHORING, BRACING, AND/OR OTHER SUITABLE SUPPORT FOR THE POLES DURING CONSTRUCTION.
- ALL BRUSH-CLEARING NECESSARY FOR ACCESS AND SEWER MAIN REHABILITATION SHALL BE INCLUDED IN THE ITEM 101 FOR PREPARING OF RIGHT-OF-WAY. ANY TREE PRUNING OR TREE REMOVAL NECESSARY SHALL BE INCLUDED IN THE ITEM 801 FOR TREE AND LANDSCAPE PROTECTION.
- SURVEY PREPARED BY MAESTAS & ASSOCIATES, LLC DATED SEPTEMBER, 2022.

FOR CONCEPTUAL BYPASS PLAN, SEE SHEET 75.
 FOR CONCEPTUAL TRAFFIC CONTROL PLAN, SEE SHEET 114.



LEGEND

PROP. SAN SEWER	●—
PROP. LATERAL WITH TWO WAY CLEAN OUT	○—
EXIST. WATER MAIN	●—6" A.C.W
EXIST. GAS MAIN	—2"G
EXIST. SAN. SEWER	—8"SA
EXIST. STORM SEWER	—12"ST
OVER HEAD UTILITY	—OHU
EXIST. RIGHT OF WAY	---
PROPERTY LINES	---
EXIST. EOP WITH CURB	---
EXIST. EOP WITHOUT CURB	---
EXIST. TREES	☁
CONC. ENCASUREMENT	▨
DRIVEWAY & SIDEWALK REPAIR	▩
FLOWABLE FILL	■
MILL AND OVERLAY	■

100% SUBMITTAL



Lockwood, Andrews & Newman, Inc.
 A LEO A DAILY COMPANY
 TBPE REGISTRATION NO.: F-2614

NO.	REVISION	DRAWN	APPROVED	DATE
1	ADDENDUM NO. 5	TRM	EMA	12/28/23

REVISIONS
 2021 CMOM PACKAGE 6 - OPEN CUT AND PIPE BURST
 SITE NO. 26 - COMPKEY 1066483
 PECAN VALLEY DR

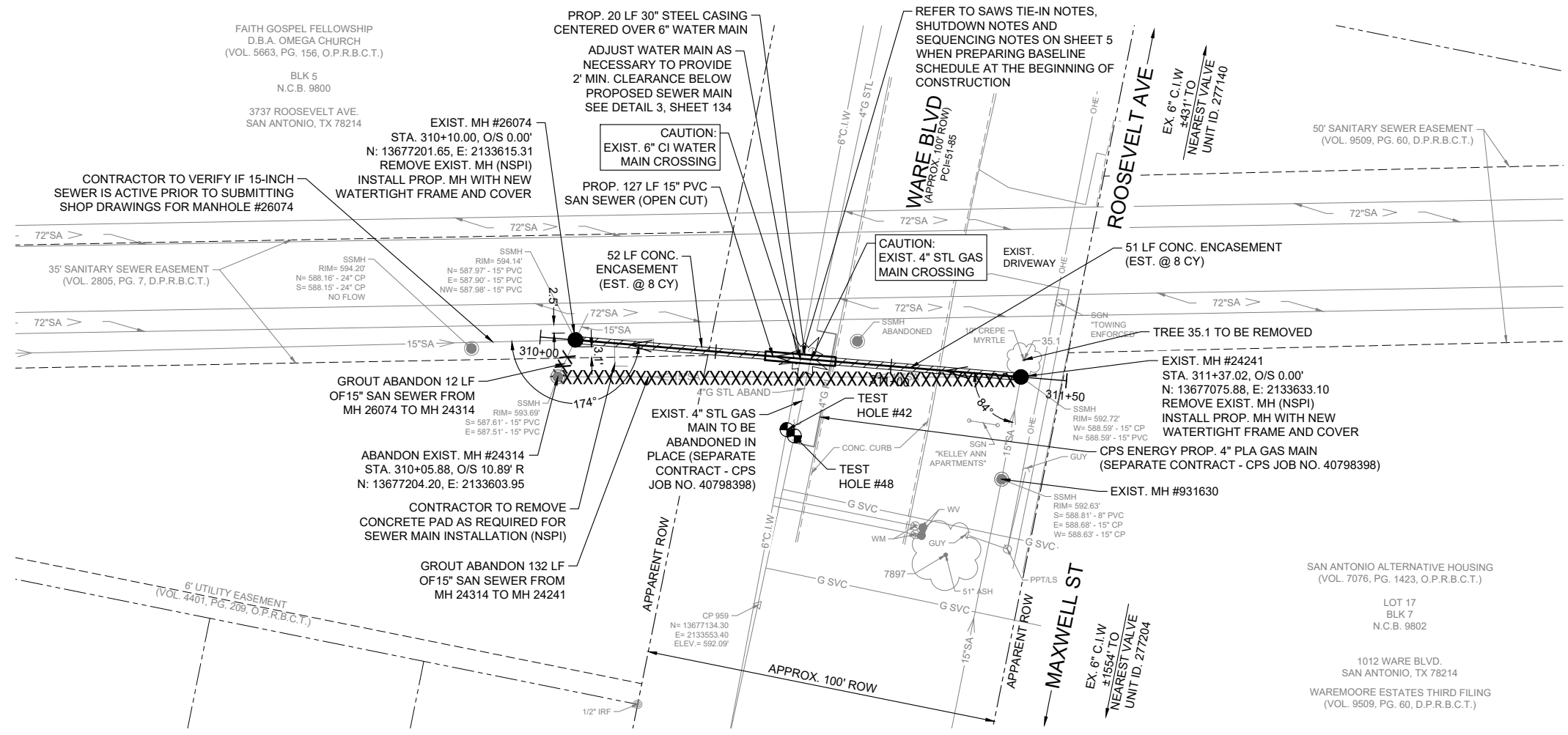
DEVELOPER:	BUDGET PROJ.
CONT.	
SUBMITTED	
APPROVED	
MAP NO. 180562	SHEET 45
SECT. NO.	OF 144
DR. TRM	CK. EMA
JOB NO. 22-4510	

FILE:04_CXXX-CMOM_COPB PLPR 23-27.dwg PLOTTED: 12/18/2023 12:46 PM BY: MOHRE, TYLER

TRENCH EXCAVATION SAFETY PROTECTION: CONTRACTOR AND/OR CONTRACTOR'S INDEPENDENTLY RETAINED EMPLOYEE OR STRUCTURAL DESIGN/GEOTECHNICAL/SAFETY EQUIPMENT CONSULTANT, IF ANY, SHALL REVIEW THESE PLANS AND ANY AVAILABLE GEOTECHNICAL INFORMATION AND THE ANTICIPATED INSTALLATION SITES(S) IN ORDER TO DEVELOP THE CONTRACTOR'S PLANS TO IMPLEMENT THE PROJECT DESCRIBED IN THE CONTRACT DOCUMENTS. THE CONTRACTOR'S PLANS SHALL PROVIDE FOR ADEQUATE TRENCH SAFETY SYSTEMS THAT COMPLY WITH, AS A MINIMUM, OSHA STANDARDS FOR TRENCH EXCAVATIONS. CONTRACTOR AND/OR CONTRACTOR'S INDEPENDENTLY RETAINED EMPLOYEE OR SAFETY CONSULTANT SHALL DEVELOP AND IMPLEMENT A TRENCH SAFETY PROGRAM IN ACCORDANCE WITH OSHA STANDARDS GOVERNING THE PRESENCE AND ACTIVITIES OF INDIVIDUALS WORKING IN AND AROUND TRENCH EXCAVATION.

CPS ENERGY NOTE: CALL THE TEXAS STATE WIDE ONE CALL LOCATOR NUMBER 1-800-344-8377, 48 HOURS BEFORE BEGINNING ANY EXCAVATION.

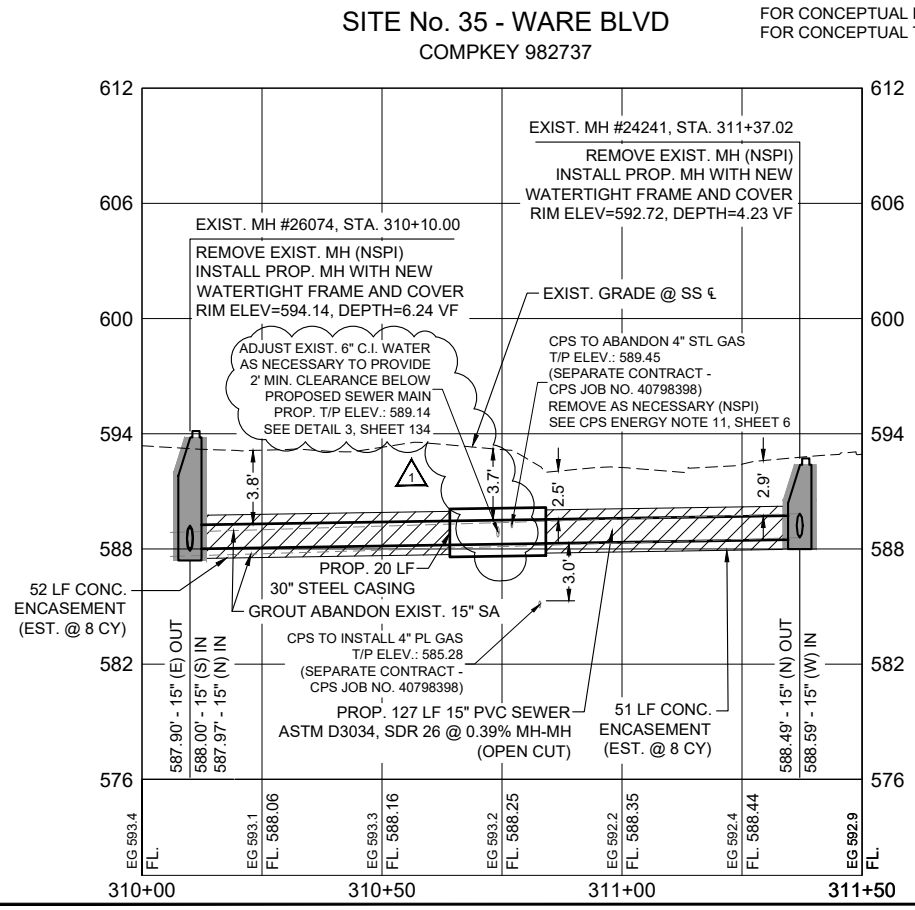
ESTIMATED QUANTITIES			
ITEM	DESCRIPTION	UNIT	QTY
103.1	REMOVE CONCRETE CURB (COSA SPEC)	LF	20
203.1	TACK COAT (COSA SPEC)	GAL	2
205.2	HOT MIX ASPHALTIC PAVEMENT, TYPE B (10" COMP DEPTH) (COSA SPEC)	SY	12
205.4	HOT MIX ASPHALTIC PAVEMENT, TYPE D (2" COMP DEPTH) (COSA SPEC)	SY	15
208.1	SALVAGING, HAULING, AND STOCKPILING RECLAIMABLE ASPHALTIC PAVEMENT (2" DEPTH) (COSA SPEC)	SY	15
500.1	CONCRETE CURB (COSA SPEC)	LF	20
530.1	BARRICADES, SIGNS, AND TRAFFIC HANDLING (COSA SPEC) - SITE NO. 35	EA	1
550	TRENCH EXCAVATION SAFETY PROTECTION	LF	165
814	8" DUCTILE IRON PIPE	LF	38
840	6" WATER TIE-IN	EA	2
841	WATER HYDROSTATIC TESTING	EA	1
844	2" BLOW-OFF, TEMPORARY	EA	2
848	15" PVC SANITARY SEWER PIPE (SDR 26, ASTM D3034) (ALL DEPTHS)	LF	107
852.8.1	SANITARY SEWER MANHOLE (0' - 6' DEPTH) (WATERTIGHT)	EA	2
852.8.2	EXTRA DEPTH MANHOLES (> 6' DEEP)	VF	1
856.2	15" PVC SANITARY SEWER CARRIER PIPE (SDR 26, ASTM D3034)	LF	20
856.3	30" STEEL CASING (0.375-INCH THICKNESS)	LF	20
858	CONCRETE ENCASUREMENT, CRADLES, SADDLES AND COLLARS	CY	17
862.7.1	ABANDONMENT OF SANITARY SEWER MANHOLE	EA	1
862.7.2	ABANDONMENT OF SANITARY SEWER MAINS (GROUTED)	LF	144
865	BYPASS PUMPING (SMALL DIAMETER SANITARY SEWERS) - SITE NO. 35	EA	1
866	SANITARY SEWER MAIN PRE-TELEVISION INSPECTION (8"-15" DIA)	LF	144
866	SANITARY SEWER MAIN POST-TELEVISION INSPECTION (8"-15" DIA)	LF	127



- NOTES:**
- DIMENSIONS ARE IN FEET UNLESS OTHERWISE NOTED.
 - PROPERTY LINES SHOWN ARE APPROXIMATE AND RIGHT-OF WAY BOUNDARY LINE SHOWN IS APPARENT.
 - THE EXISTENCE AND LOCATION OF UTILITIES SHOWN ON THE PLAN ARE APPROXIMATE BASED ON THE AVAILABLE PLAN-OF-RECORD DRAWINGS AND ARE NOT GUARANTEED TO BE ACCURATE.
 - CONTRACTOR SHALL FIELD VERIFY ALL EXISTING AND PROPOSED DIMENSIONS PRIOR TO CONSTRUCTION (NSPI).
 - CONTRACTOR SHALL VERIFY LOCATIONS OF EXISTING LATERALS AND CLEANOUTS PRIOR TO CONSTRUCTION (NSPI).
 - CONTRACTOR SHALL EXPOSE AND VERIFY LOCATIONS, DEPTHS, DISTANCES, PIPE SIZES AND GRADES OF EXISTING UTILITIES PRIOR TO CONSTRUCTION (NSPI).
 - CONTRACTOR SHALL USE EXTREME CAUTION AND CARE WHEN UNCOVERING UTILITIES DESIGNATED BY CAUTION LOCATE CROSSING STAR ON PLANS, HAND DIGGING (NSPI) MAY BE NECESSARY.
 - LATERALS SHALL BE INSTALLED TO THE APPARENT ROW BOUNDARY LINE WITH CLEANOUT AND SAWS APPROVED THREADED CLEANOUT CAP (NSPI), TRAFFIC RATED CAST IRON FRAME AND GATE CAP (NSPI) REQUIRED FOR SEWER CLEANOUTS IN SIDEWALK OR DRIVEWAY AND PAVEMENT PER SAWS STANDARD DETAIL DD-854-02.
 - CONTRACTOR TO TAKE CAUTION WHILE EXCAVATING FOR SEWER MAIN AND LATERALS AT EXISTING GAS MAIN CROSSINGS AND EXPOSE AND PROTECT GAS MAINS AND GAS SERVICES WHERE CROSSING SEWER MAIN OR LATERALS, HAND DIGGING MAY BE NECESSARY (NSPI).
 - EXCAVATION IN THE VICINITY OF TREES SHALL PROCEED WITH CAUTION, HAND DIGGING (NSPI) MAY BE NECESSARY. TREES FOUND ON PRIVATE PROPERTY WITH BRANCHES THAT OVERHANG ONTO PUBLIC ROW, WHERE IDENTIFIED, MAY REQUIRE TRIMMING, PRUNING, AND ROOT PROTECTION FOR CONSTRUCTION AND SHALL FOLLOW THE APPROVED TREE PERMIT (NSPI).
 - CONTRACTOR TO TAKE CAUTION WHEN CONSTRUCTING NEAR EXISTING POWER POLES. WHENEVER POWER/TEL. POLES ARE (<5') FROM OUTSIDE OF POLE TO TRENCH OF UTILITY CONSTRUCTION THE CONTRACTOR SHALL COORDINATE WITH CPS TO PROVIDE PROPER SHORING, BRACING, AND/OR OTHER SUITABLE SUPPORT FOR THE POLES DURING CONSTRUCTION.
 - SURVEY PREPARED BY MAESTAS & ASSOCIATES, LLC DATED SEPTEMBER, 2022.

TEST HOLE 42
6" C.I. WATER
N: 13677137.37
E: 2133603.71
GROUND ELEV = 592.70
DEPTH = 3.56
OWNER: SAWS

TEST HOLE 48
4" STL GAS
N: 13677134.97
E: 2133602.49
GROUND ELEV = 592.67
DEPTH = 3.22
OWNER: CPS ENERGY



SPECIAL NOTE:

- THE WARE BLVD PROJECT SITE NO. 35 SHALL BE A PRIORITY SITE FOR THE PROJECT SEQUENCE OF WORK AND SHALL BE COMPLETED IN A TIMELY MANNER PRIOR TO THE COSA 2026 CRACK SEAL PRESERVATION PROJECT (ID 4738) BEGINS ON WARE BLVD. CONTRACTOR TO COORDINATE WITH COSA ON PAVEMENT RESTORATION REQUIREMENTS.

100% SUBMITTAL

SCALE: 1"=20' H, 1"=5' V (FULL SCALE)
1"=40' H, 1"=10' V (HALF SCALE)

LEGEND

- PROP. SAN SEWER
- PROP. LATERAL WITH TWO WAY CLEAN OUT
- EXIST. WATER MAIN
- EXIST. GAS MAIN
- EXIST. SAN. SEWER
- SEWER ABANDONMENT
- EXIST. STORM SEWER
- OVER HEAD UTILITY
- EXIST. RIGHT OF WAY
- PROPERTY LINES
- EXIST. EOP WITH CURB
- EXIST. EOP WITHOUT CURB
- EXIST. TREES
- CONC. ENCASUREMENT DRIVEWAY & SIDEWALK REPAIR
- FLOWABLE FILL
- MILL AND OVERLAY

STATE OF TEXAS
ELAZA ALVAREZ
115095
LICENSED PROFESSIONAL ENGINEER

12/28/2023

Lockwood, Andrews & Newnam, Inc.
A LEO A DALY COMPANY
TBPE REGISTRATION NO.: F-2614

1	ADDENDUM NO. 5	TRM	EMA	12/28/23
NO.	REVISION	DRAWN	APPROVED	DATE

REVISIONS

2021 CMOM PACKAGE 6 - OPEN CUT AND PIPE BURST

SITE NO. 35 - COMPKEY 982737
WARE BLVD

DEVELOPER: _____
CONT. _____ BUDGET PROJ. _____

SUBMITTED _____
APPROVED _____

MAP NO. 164550 SHEET 54
SECT. NO. _____ OF 144

DR. TRM CK. EMA JOB NO. 22-4510

FILE:06_CXXX-CMOM_OCPB PLPR 30-36.dwg PLOTTED: 12/18/2023 8:56 AM BY: MOHRE, TYLER